



Adobe  
**Dreamweaver CC**  
2018 release



**CLASSROOM IN A BOOK®**  
The official training workbook from Adobe  
Jim Maivald

**FREE SAMPLE CHAPTER**

SHARE WITH OTHERS





Adobe  
**Dreamweaver CC**  
2018 release



**CLASSROOM IN A BOOK®**

The official training workbook from Adobe

Jim Maivald

Adobe Dreamweaver CC Classroom in a Book® (2018 release)

© 2018 Adobe. All rights reserved.

Adobe Press is an imprint of Pearson Education, Inc. For the latest on Adobe Press books, go to [www.adobepress.com](http://www.adobepress.com). To report errors, please send a note to [errata@peachpit.com](mailto:errata@peachpit.com). For information regarding permissions, request forms and the appropriate contacts within the Pearson Education Global Rights & Permissions department, please visit [www.pearsoned.com/permissions/](http://www.pearsoned.com/permissions/).

If this guide is distributed with software that includes an end user license agreement, this guide, as well as the software described in it, is furnished under license and may be used or copied only in accordance with the terms of such license. Except as permitted by any such license, no part of this guide may be reproduced, stored in a retrieval system, or transmitted, in any form or by any means, electronic, mechanical, recording, or otherwise, without the prior written permission of Adobe Systems Incorporated. Please note that the content in this guide is protected under copyright law even if it is not distributed with software that includes an end user license agreement.

The content of this guide is furnished for informational use only, is subject to change without notice, and should not be construed as a commitment by Adobe Systems Incorporated. Adobe Systems Incorporated assumes no responsibility or liability for any errors or inaccuracies that may appear in the informational content contained in this guide.

Please remember that existing artwork or images that you may want to include in your project may be protected under copyright law. The unauthorized incorporation of such material into your new work could be a violation of the rights of the copyright owner. Please be sure to obtain any permission required from the copyright owner.

Any references to company names in sample files are for demonstration purposes only and are not intended to refer to any actual organization.

Adobe, the Adobe logo, Classroom in a Book, Creative Cloud, the Creative Cloud logo, Dreamweaver, Edge Animate, ColdFusion, Illustrator, InDesign, and Photoshop are either registered trademarks or trademarks of Adobe Systems Incorporated in the United States and/or other countries. Adobe product screenshots reprinted with permission from Adobe Systems Incorporated.

Apple, Mac OS, macOS, and Macintosh are trademarks of Apple, registered in the U.S. and other countries. Microsoft and Windows are either registered trademarks or trademarks of Microsoft Corporation in the U.S. and/or other countries. JavaScript® is a trademark or registered trademark of Oracle in the U.S. and other countries. jQuery is a trademark of the jQuery Foundation. All other trademarks are the property of their respective owners.

Unless otherwise indicated herein, any third party trademarks that may appear in this work are the property of their respective owners and any references to third party trademarks, logos or other trade dress are for demonstrative or descriptive purposes only. Such references are not intended to imply any sponsorship, endorsement, authorization, or promotion of Pearson Education, Inc. products by the owners of such marks, or any relationship between the owner and Pearson Education, Inc. or its affiliates, authors, licensees or distributors.

Adobe Systems Incorporated, 345 Park Avenue, San Jose, California 95110-2704, USA

Notice to U.S. Government End Users. The Software and Documentation are “Commercial Items,” as that term is defined at 48 C.F.R. §2.101, consisting of “Commercial Computer Software” and “Commercial Computer Software Documentation,” as such terms are used in 48 C.F.R. §12.212 or 48 C.F.R. §227.7202, as applicable. Consistent with 48 C.F.R. §12.212 or 48 C.F.R. §§227.7202-1 through 227.7202-4, as applicable, the Commercial Computer Software and Commercial Computer Software Documentation are being licensed to U.S. Government end users (a) only as Commercial Items and (b) with only those rights as are granted to all other end users pursuant to the terms and conditions herein. Unpublished-rights reserved under the copyright laws of the United States. Adobe Systems Incorporated, 345 Park Avenue, San Jose, CA 95110-2704, USA. For U.S. Government End Users, Adobe agrees to comply with all applicable equal opportunity laws including, if appropriate, the provisions of Executive Order 11246, as amended, Section 402 of the Vietnam Era Veterans Readjustment Assistance Act of 1974 (38 USC 4212), and Section 503 of the Rehabilitation Act of 1973, as amended, and the regulations at 41 CFR Parts 60-1 through 60-60, 60-250, and 60-741. The affirmative action clause and regulations contained in the preceding sentence shall be incorporated by reference.

Writer: James J. Maivald

Executive Editor: Nancy Davis

Development Editor: Robyn G. Thomas

Senior Production Editor: Tracey Croom

Technical Reviewer: Candace Mairs

Copyeditor: Scout Festa

Composition: Kim Scott, Bumpy Design

Proofreader: Patricia Pane

Indexer: James Minkin

Cover Illustration: David Gann, [behance.net/davidgann](http://behance.net/davidgann)

Cover Designer: Eddie Yuen

Interior Designer: Mimi Heft

Printed and bound in the United States of America

1 18

ISBN-13: 978-0-13-485252-2

ISBN-10: 0-13-485252-4

# CONTENTS

## GETTING STARTED 1



About Classroom in a Book.....	1
TinyURLs .....	1
Prerequisites.....	2
Conventions used in this book .....	2
<i>Bolded text</i> .....	2
<i>Code font</i> .....	2
<i>Strikethrough</i> .....	3
<i>Missing punctuation</i> .....	3
<i>Element references</i> .....	3
Windows vs. macOS instructions .....	3
Installing the program .....	4
Updating Dreamweaver to the latest version.....	5
Online content .....	6
Recommended lesson order .....	7
Bonus material .....	8
On first launch.....	9
Choosing the program color theme .....	9
Setting up the workspace .....	10
Defining a Dreamweaver site.....	11
Checking for updates .....	14
Additional resources .....	15
<i>Adobe Authorized Training Centers</i> .....	15

## 1 CUSTOMIZING YOUR WORKSPACE 16



Touring the workspace.....	18
Using the Start Screen .....	19
<i>Recent</i> .....	20
<i>CC Files</i> .....	20

<i>Quick Start</i> .....	21
<i>Starter Templates</i> .....	21
<i>Create New and Open</i> .....	22
<i>Learn</i> .....	22
Exploring New Feature guides .....	23
Setting interface preferences .....	23
Switching and splitting views .....	26
<i>Code view</i> .....	26
<i>Design view</i> .....	26
<i>Live view</i> .....	27
<i>Split view</i> .....	28
<i>Live Source Code</i> .....	29
<i>Inspect mode</i> .....	29
Selecting a workspace layout .....	30
<i>Standard workspace</i> .....	30
<i>Developer workspace</i> .....	31
Working with panels .....	31
<i>Minimizing panels</i> .....	32
<i>Closing panels and panel groups</i> .....	33
<i>Dragging</i> .....	33
<i>Floating</i> .....	34
<i>Grouping, stacking, and docking</i> .....	34
Personalizing Dreamweaver .....	35
<i>Saving a custom workspace</i> .....	36
Working with Extract .....	36
Working with toolbars .....	37
<i>Document toolbar</i> .....	37
<i>Standard toolbar</i> .....	37
<i>Common toolbar</i> .....	38
Creating custom keyboard shortcuts .....	38
Using the Property inspector .....	40
<i>Using the HTML tab</i> .....	40
<i>Using the CSS tab</i> .....	41
<i>Accessing image properties</i> .....	41
<i>Accessing table properties</i> .....	41
Using the Related Files interface .....	41
Using tag selectors .....	43

Using the CSS Designer .....	44
Sources .....	44
@Media .....	45
Selectors .....	45
Properties .....	46
All and Current modes .....	47
Using the Visual Media Query (VMQ) interface .....	48
Using the DOM Viewer .....	49
Using Element dialogs, displays, and inspectors .....	49
Position Assist dialog .....	49
Element Display .....	50
Image Display .....	50
Text Display .....	51
Setting up version control in Dreamweaver .....	51
Exploring, experimenting, and learning .....	52
Review questions .....	53
Review answers .....	53

## 2 HTML BASICS 54



What is HTML? .....	56
Where did HTML begin? .....	56
Basic HTML code structure .....	58
Frequently used HTML elements .....	58
HTML tags .....	58
HTML character entities .....	60
What's new in HTML5 .....	61
HTML5 tags .....	61
Semantic web design .....	62
New techniques and technology .....	63
Review questions .....	64
Review answers .....	65

## B2 HTML BASICS BONUS B2-1

## 3 CSS BASICS 66



What is CSS? .....	68
HTML vs. CSS formatting .....	68
HTML defaults .....	70
HTML5 defaults? .....	71

<i>Browser antics</i> .....	73
<i>CSS box model</i> .....	74
<i>Applying CSS styling</i> .....	75
<i>Cascade theory</i> .....	76
<i>Inheritance theory</i> .....	78
<i>Descendant theory</i> .....	79
<i>Specificity theory</i> .....	79
<i>Code Navigator</i> .....	81
<i>CSS Designer</i> .....	85
<i>Multiples, classes, and ids, oh my!</i> .....	88
<i>Applying formatting to multiple elements</i> .....	89
<i>Using CSS shorthand</i> .....	89
<i>Creating class attributes</i> .....	90
<i>Creating id attributes</i> .....	91
<i>CSS3 features and effects</i> .....	91
<i>CSS3 overview and support</i> .....	92
<i>Review questions</i> .....	94
<i>Review answers</i> .....	95

### **B3 CSS BASICS BONUS**

**B3-1**

### **4 WEB DESIGN BASICS**

**96**



<i>Developing a new website</i> .....	98
<i>What is the purpose of the website?</i> .....	98
<i>Who is the audience?</i> .....	98
<i>How do they get here?</i> .....	98
<i>Scenario</i> .....	101
<i>Working with thumbnails and wireframes</i> .....	101
<i>Creating thumbnails</i> .....	101
<i>Creating a page design</i> .....	102
<i>Creating wireframes</i> .....	103
<i>Review questions</i> .....	105
<i>Review answers</i> .....	105



### **B4 CREATING WEB ASSETS USING PHOTOSHOP GENERATOR BONUS B4-1**

### **5 CREATING A PAGE LAYOUT**

**106**



<i>Evaluating page design options</i> .....	108
<i>Working with predefined layouts</i> .....	110
<i>Styling an existing layout</i> .....	113

	Styling elements using the Extract panel .....	115
	Extracting text from a Photoshop mockup.....	119
	Troubleshooting CSS styling .....	121
	Extracting text styling from a Photoshop mockup.....	123
	Creating a gradient background using Extract .....	124
	Extracting image assets from a mockup .....	128
	Adding CSS background effects in code .....	134
	Finishing up the layout.....	138
	Review questions .....	146
	Review answers.....	147
<b>6</b>	<b>WORKING WITH TEMPLATES</b>	<b>148</b>
	Creating a template from an existing layout .....	150
	Inserting editable regions .....	151
	<i>Building semantic content</i> .....	153
	Inserting HTML entities .....	158
	Inserting metadata .....	159
	Validating HTML code.....	162
	Producing child pages .....	164
	<i>Creating a new page</i> .....	164
	<i>Adding content to child pages</i> .....	166
	Moving CSS styles to a linked file .....	172
	Updating a template.....	176
	<i>Formatting content in editable regions</i> .....	181
	Review questions .....	184
	Review answers.....	185
<b>7</b>	<b>WORKING WITH TEXT, LISTS, AND TABLES</b>	<b>186</b>
	Previewing the completed file.....	188
	Creating and styling text.....	191
	<i>Importing text</i> .....	191
	<i>Creating semantic text structures</i> .....	194
	<i>Creating headings</i> .....	196
	<i>Adding other HTML structures</i> .....	197
	Creating lists.....	201
	<i>Creating indented text</i> .....	205
	Creating and styling tables.....	210



<i>Creating tables from scratch</i> .....	210
<i>Copying and pasting tables</i> .....	215
<i>Styling tables with CSS</i> .....	216
<i>Styling table cells</i> .....	221
<i>Controlling table display</i> .....	223
<i>Inserting tables from other sources</i> .....	226
<i>Adding and formatting caption elements</i> .....	229
<i>Spell-checking webpages</i> .....	231
<i>Finding and replacing text</i> .....	233
<i>Optional self-paced exercise</i> .....	238
<i>Review questions</i> .....	239
<i>Review answers</i> .....	239

## 8 WORKING WITH IMAGES 240



<i>Web image basics</i> .....	242
<i>Vector graphics</i> .....	242
<i>Raster graphics</i> .....	242
<i>Raster image file formats</i> .....	246
<i>Previewing the completed files</i> .....	247
<i>Inserting an image</i> .....	248
<i>Controlling image positions with CSS classes</i> .....	250
<i>Working with the Insert panel</i> .....	252
<i>Using the Insert menu</i> .....	254
<i>Inserting non-web file types</i> .....	256
<i>Working with Photoshop Smart Objects (optional)</i> .....	260
<i>Copying and pasting images from Photoshop (optional)</i> ..	262
<i>Inserting images by drag and drop</i> .....	266
<i>Optimizing images with the Property inspector</i> .....	267
<i>Review questions</i> .....	271
<i>Review answers</i> .....	271

## 9 WORKING WITH NAVIGATION 272



<i>Hyperlink basics</i> .....	274
<i>Internal and external hyperlinks</i> .....	274
<i>Relative vs. absolute hyperlinks</i> .....	274
<i>Previewing the completed file</i> .....	275
<i>Creating internal hyperlinks</i> .....	278
<i>Creating relative links</i> .....	278

<i>Creating a home link</i> .....	282
<i>Updating links in child pages</i> .....	283
<i>Creating an external link</i> .....	286
<i>Creating an absolute link in Live view</i> .....	286
<i>Setting up email links</i> .....	289
<i>Creating an image-based link</i> .....	291
<i>Creating image-based links using the Element Display</i> .....	291
<i>Creating text links using the Text Display</i> .....	292
<i>Targeting page elements</i> .....	294
<i>Creating internal targeted links</i> .....	294
<i>Creating a destination link in the Element Display</i> .....	297
<i>Targeting id-based link destinations</i> .....	298
<i>Locking an element on the screen</i> .....	299
<i>Styling a navigation menu</i> .....	301
<i>Checking your page</i> .....	305
<i>Adding destination links (optional)</i> .....	306
<i>Review questions</i> .....	307
<i>Review answers</i> .....	307

## 10 **ADDING INTERACTIVITY** **308**



<i>Learning about Dreamweaver behaviors</i> .....	310
<i>Previewing the completed file</i> .....	312
<i>Working with Dreamweaver behaviors</i> .....	313
<i>Applying a behavior</i> .....	316
<i>Applying a Swap Image Restore behavior</i> .....	318
<i>Removing applied behaviors</i> .....	320
<i>Adding behaviors to hyperlinks</i> .....	320
<i>Working with jQuery Accordion widgets</i> .....	323
<i>Inserting a jQuery Accordion widget</i> .....	324
<i>Styling a jQuery Accordion</i> .....	327
<i>Applying a background effect to the Accordion tab</i> .....	331
<i>Formatting a conditional state for an accordion tab</i> .....	332
<i>Using Live Code to identify dynamic styling</i> .....	335
<i>Styling the background of the accordion content</i> .....	339
<i>Review questions</i> .....	342
<i>Review answers</i> .....	343

## 11 PUBLISHING TO THE WEB 344



Defining a remote site .....	346
Setting up a remote FTP site .....	347
Establishing a remote site on a local or network web server (optional) .....	351
Cloaking folders and files .....	354
Wrapping things up .....	356
Putting your site online (optional) .....	359
Synchronizing local and remote sites .....	363
Review questions .....	366
Review answers .....	367

## 12 WORKING WITH CODE 368



Creating HTML code .....	370
Writing code manually .....	370
Writing code automatically .....	373
Working with multicursor support .....	377
Commenting your code .....	379
Working with CSS preprocessors .....	380
Enabling a preprocessor .....	380
Creating the CSS source file .....	383
Compiling CSS code .....	386
Nesting CSS selectors .....	389
Importing other style sheets .....	391
Learn more about preprocessors .....	393
Linting support .....	393
Selecting code .....	395
Using line numbers .....	395
Using tag selectors .....	395
Using parent tags .....	397
Collapsing code .....	398
Expanding code .....	398
Accessing Split Code view .....	399
Previewing assets in Code view .....	400
Review questions .....	402
Review answers .....	403

<b>B13</b>	<b>DESIGNING FOR MOBILE DEVICES</b>	B13-1
<b>B14</b>	<b>WORKING WITH A WEB FRAMEWORK</b>	B14-1
<b>B15</b>	<b>ADAPTING CONTENT TO RESPONSIVE DESIGN</b>	B15-1
<b>B16</b>	<b>WORKING WITH WEB ANIMATION AND VIDEO BONUS</b>	B15-1
 <b>APPENDIX: TINY URLS</b>		 <b>405</b>
<b>INDEX</b>		<b>407</b>

# GETTING STARTED

Adobe® Dreamweaver CC is one of the leading web-authoring programs available. Whether you create websites for others for a living or plan to create one for your own business, Dreamweaver offers all the tools you need to get professional-quality results.

## About Classroom in a Book

*Adobe Dreamweaver CC Classroom in a Book® (2018 release)* is part of the official training series for graphics and publishing software developed with the support of Adobe product experts.

The lessons are designed so you can learn at your own pace. If you're new to Dreamweaver, you'll learn the fundamentals of putting the program to work. If you are an experienced user, you'll find that Classroom in a Book teaches many advanced features, including tips and techniques for using the latest version of Dreamweaver.

Although each lesson includes step-by-step instructions for creating a specific project, you'll have room for exploration and experimentation. You can follow the book from start to finish or complete only those lessons that correspond to your interests and needs. Each lesson concludes with a review section containing questions and answers on the subjects you've covered.

## TinyURLs

At several points in the book, I reference external information available on the Internet. The uniform resource locators (URLs) for this information are often long and unwieldy, so I have provided custom TinyURLs in many places for your convenience. Unfortunately, the TinyURLs sometimes expire over time and no longer function. If you find that a TinyURL doesn't work, look up the actual URL provided in the appendix.

## Prerequisites

Before using *Adobe Dreamweaver CC Classroom in a Book (2018 release)*, you should have a working knowledge of your computer and its operating system. Be sure you know how to use the mouse, standard menus and commands, as well as how to open, save, and close files. If you need to review these techniques, see the printed or online documentation included with your Windows or macOS operating system.

## Conventions used in this book

Working in Dreamweaver means you'll be working with code. We have used several conventions in the following lessons and exercises to make working with the code in this book easier to follow and understand.

### Bolded text

Certain names, words, and phrases will be bolded from time to time, usually when first cited in an instruction. This styling will include text, other than HTML or CSS code, that needs to be entered into program dialogs or into the body of a webpage, like this:

Type: **Insert main heading here**

Filenames, like **mygreen-styles.css**, will also be bolded as needed to identify crucial resources or targets of a specific step or exercise. Be aware that these same names may not be bolded in introductory descriptions or general discussion. Be sure to identify all resources required in a specific exercise prior to commencing it.

### Code font

In many instructions, you will be required to enter HTML code, CSS rules and properties, and other code-based markup. To distinguish the markup from the instructional text, the entries will be styled with a code font, like this:

Examine the following code: `<h1>Heading goes here</h1>`

In instances where you must enter the markup yourself, the entry will be formatted in color, like this:

Insert the following code: `<h1>Heading goes here</h1>`

## Strikethrough

In several exercises, you will be instructed to delete markup that already exists within the webpage or style sheet. In those instances, the targeted references will be identified with strikethrough formatting, like this:

Delete the following values:

```
margin: 10px 20px 10px 20px;  
background-image: url(images/fern.png), url(images/stripes.png);
```

Be careful to delete only the identified markup so that you achieve the following result:

```
margin: 10px 10px;  
background-image: url(images/fern.png);
```

## Missing punctuation

HTML code, CSS markup, and JavaScript often require the use of various punctuation, such as periods (.), commas (,), and semicolons (;), and can be damaged by their incorrect usage or placement. Consequently, I have omitted periods and other punctuation expected in a sentence or paragraph from an instruction or hyperlink whenever it may cause confusion or a possible error, as in the following two instructions:

Enter the following code: `<h1>Heading goes here</h1>`

Type the following link: <http://adobe.com>

## Element references

Within the body of descriptions and exercise instructions, elements may be referenced by name or by class or ID attribute. When an element is identified by its tag name, it will appear as `<section>` or `section`. When referenced by its class attribute, the name will appear with a leading period (.) in a code-like font, like this: `.content` or `.sidebar1`. References to elements by their ID attribute will appear with a leading hash (#) and in a code font, like this: `#top`. This practice matches the way these elements appear in Dreamweaver's tag selector interface.

## Windows vs. macOS instructions

In most cases, Dreamweaver performs identically in both Windows and macOS. Minor differences exist between the two versions, mostly because of platform-specific issues out of the control of the program. Most of these are simply differences in keyboard shortcuts, how dialogs are displayed, and how buttons are named. In most cases, screen shots were made in the macOS version of Dreamweaver and may appear different from your own screen.

Where specific commands differ, they are noted within the text. Windows commands are listed first, followed by the macOS equivalent, such as Ctrl+C/Cmd+C. Common abbreviations are used for all commands whenever possible, as follows:

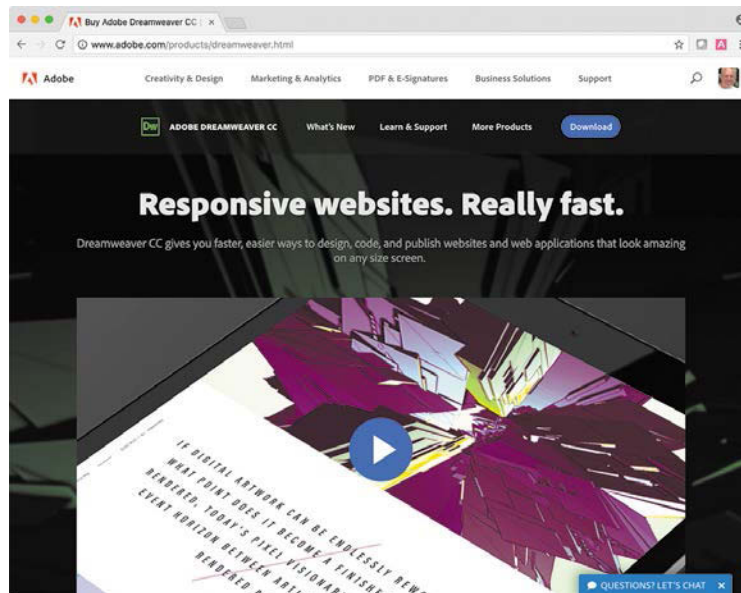
Windows	macOS
Control = Ctrl	Command = Cmd
Alternate = Alt	Option = Opt

As lessons proceed, instructions may be truncated or shortened to save space, with the assumption that you picked up the essential concepts earlier in the lesson. For example, at the beginning of a lesson you may be instructed to “press Ctrl+C/Cmd+C.” Later, you may be told to “copy” text or a code element. These should be considered identical instructions.

If you find you have difficulties in any particular task, review earlier steps or exercises in that lesson. In some cases, if an exercise is based on concepts covered earlier, you will be referred to the specific lesson.

## Installing the program

Before you perform any exercises in this book, verify that your computer system meets the hardware requirements for Dreamweaver, that it's correctly configured, and that all required software is installed.



If you do not have Dreamweaver, you will first have to install it from Creative Cloud. Adobe Dreamweaver must be purchased separately; it is not included with the lesson files that accompany this book. Go to [helpx.adobe.com/dreamweaver/system-requirements.html](https://helpx.adobe.com/dreamweaver/system-requirements.html) to obtain the system requirements.



Go to [www.adobe.com/creativecloud/plans.html](http://www.adobe.com/creativecloud/plans.html) to sign up for Adobe Creative Cloud. Dreamweaver may be purchased with the entire Creative Cloud family or as a standalone app. Adobe also allows you to try Creative Cloud and the individual applications for seven days for free.

Check out [www.adobe.com/products/dreamweaver.html](http://www.adobe.com/products/dreamweaver.html) to learn more about the different options for obtaining Dreamweaver.

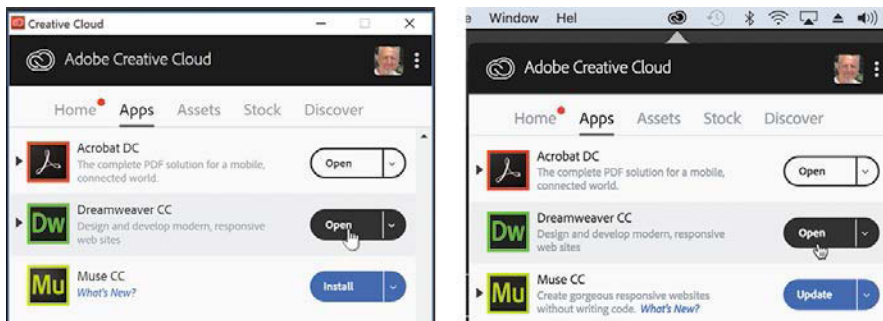
## Updating Dreamweaver to the latest version

Although Dreamweaver is downloaded and installed on your computer hard drive, periodic updates are provided via Creative Cloud. Some updates provide bug fixes and security patches, while others supply amazing new features and capabilities.

The lessons in this book are based on Dreamweaver CC (2018 release) and may not work properly in any earlier version of the program. To check which version is installed on your computer, choose Help > About Dreamweaver in Windows or Dreamweaver > About Dreamweaver on macOS. A window will display the version number of the application and other pertinent information.



If you have an earlier version of the program installed, you will have to update Dreamweaver to the latest version. You can check the status of your installation by opening the Creative Cloud manager and logging in to your account.



Windows

macOS

Check out [helpx.adobe.com/creative-cloud/help/download-install-trial.html](http://helpx.adobe.com/creative-cloud/help/download-install-trial.html) to learn how to download and install a limited-period trial of Creative Cloud to your computer or laptop.

# Online content

◆ **Warning:** Do not copy one lesson folder into any other lesson folder. The files and folders for each lesson cannot be used interchangeably.

Your purchase of this Classroom in a Book includes online materials provided by way of your Account page on peachpit.com.

## Lesson files

To work through the projects in this book, you will need to download the lesson files from peachpit.com. You can download the files for individual lessons, or it may be possible to download them all in a single file.

## Web Edition

The Web Edition is an online interactive version of the book providing an enhanced learning experience. Your Web Edition can be accessed from any device with a connection to the Internet; it contains the following:

- The complete text of the book
- Hours of instructional video keyed to the text
- Interactive quizzes

In addition, the Web Edition may be updated when Adobe adds significant feature updates between major Creative Cloud releases. To accommodate the changes, sections of the online book may be updated or new sections may be added.

## Accessing the lesson files and Web Edition

If you purchased an ebook from peachpit.com or adobepress.com, your Web Edition will automatically appear under the Digital Purchases tab on your Account page. Click the *Launch* link to access the product. Continue reading to learn how to register your product to get access to the lesson files.

If you purchased an ebook from a different vendor or you bought a print book, you must register your purchase on peachpit.com to access the online content:

- 1 Go to [www.peachpit.com](http://www.peachpit.com).
- 2 Sign in or create a new account.
- 3 Enter the ISBN: **9780134852522**.
- 4 Answer the questions as proof of purchase.
- 5 The Web Edition will appear on the Digital Purchases tab on your Account page. Click the *Launch* link to access the product.

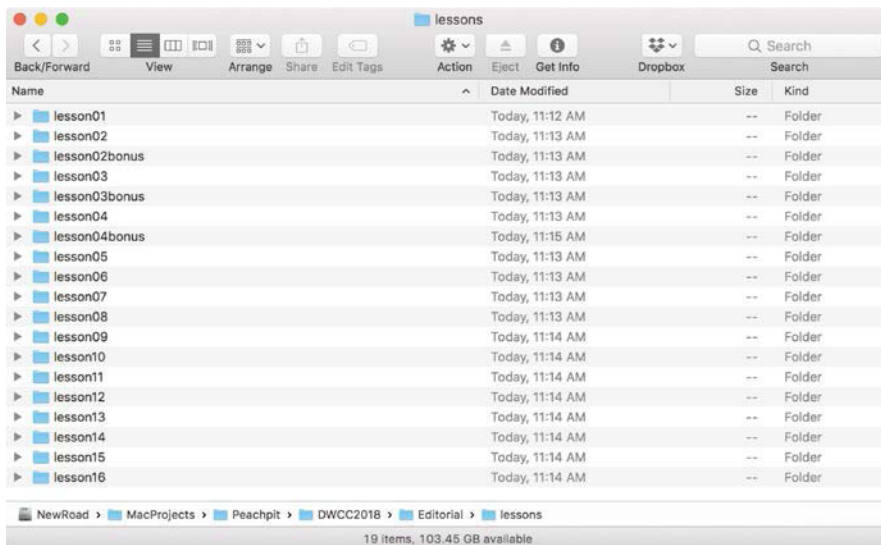
The lesson files can be accessed through the Registered Products tab on your Account page. Click the Access Bonus Content link below the title of your product to proceed to the download page. Click the lesson file links to download them to your computer.

● **Note:** The files are updated from time to time, so the date may be different than the one shown.

The files are compressed into ZIP archives to speed up download time and to protect the contents from damage during transfer. You must uncompress (or “unzip”) the files to restore them to their original size and format before you use them with the book. Modern Mac and Windows systems are set up to open ZIP archives by simply double-clicking.

**6** Do one of the following:

- If you downloaded **DWCC2018\_lesson\_files.zip**, unzipping the archive will produce a folder named **DWCC2018\_Lesson\_Files** containing all the lesson files used by the book.
- If you downloaded the lessons individually, create a new folder on your hard drive and name it **DWCC2018**. Unzip the individual lesson files to this folder. That way, all the lesson files will be stored in one location. Do not share or copy files between lessons.



## Recommended lesson order

The training in this book is designed to take you from A to Z in basic to intermediate website design, development, and production. Each new lesson builds on previous exercises, using supplied files and assets to create an entire website. We recommend you download all lesson files at once.

Start with Lesson 1 and proceed through the entire book to Lesson 12. Continue with the online Lessons 13 through 16 (refer to the “Online content” section for more information about the online material).

We recommend that you do not skip any lessons, or even individual exercises. Although ideal, this method may not be a practicable scenario for every user. So each lesson folder contains all the files needed to complete every exercise within it using partially completed or staged assets, allowing you to complete individual lessons out of order, if desired.

However, don't assume that the staged files and customized templates in each lesson represent a complete set of assets. It may seem that these folders contain duplicative materials, but these "duplicate" files and assets, in most cases, cannot be used interchangeably in other lessons and exercises. Doing so will probably cause you to fail to achieve the goal of the exercise.

For that reason, you should treat each folder as a standalone website. Copy the lesson folder to your hard drive, and create a new site for that lesson using the Site Setup dialog. Do not define sites using subfolders of existing sites. Keep your sites and assets in their original folders to avoid conflicts.

One suggestion is to organize the lesson folders in a single *web* or *sites* master folder near the root of your hard drive. But avoid using the Dreamweaver application folder. In most cases, you'll want to use a local web server as your testing server, which is described in Lesson 11, "Publishing to the Web."

## Bonus material

We've provided additional material for Lessons 2, 3, and 4 on the Peachpit website. This book has so much great material that we couldn't fit it all in the printed pages, so we placed Lessons 13 through 16 on the Peachpit website as well:

Lesson 2, "HTML Basics Bonus"

Lesson 3, "CSS Basics Bonus"

Lesson 4, "Creating Web Assets Using Adobe Generator Bonus"

Lesson 13, "Designing for Mobile Devices"

Lesson 14, "Working with a Web Framework"

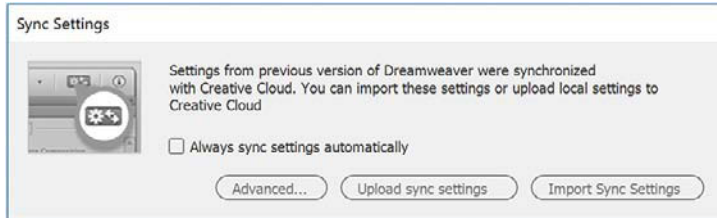
Lesson 15, "Adapting Content to Responsive Design"

Lesson 16, "Working with Web Animation and Video"

You will find these on your account page (Lessons & Update Files tab) once you register your book, as described earlier in "Accessing the Classroom in a Book files."

# On first launch

Right after installation or upon first launch, Dreamweaver CC will display several introduction screens. First, the Sync Settings dialog will appear. If you are a user of previous versions of Dreamweaver, select Import Sync Settings to download your existing program preferences. If this is the first time you've used Dreamweaver, select Upload Sync Settings to sync your preferences to your Creative Cloud account.



In the book, I use the lightest interface themes for the screen shots. This was done both to save ink in the printing and to place less stress on the environment. Feel free to pick the color themes you prefer.

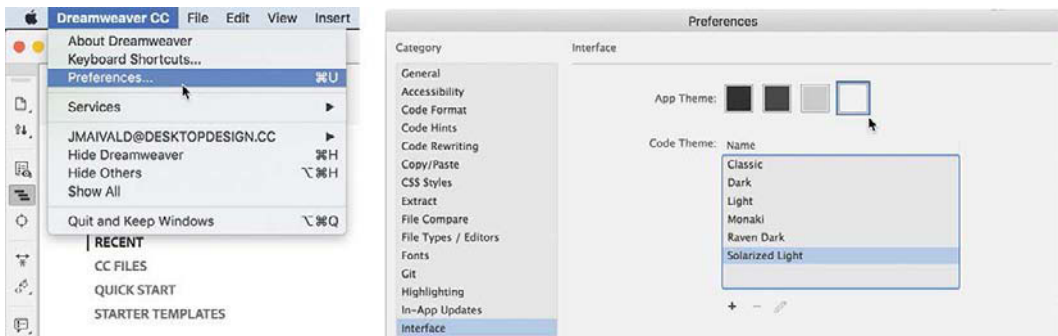
## Choosing the program color theme

If you purchased the book after you installed and launched Dreamweaver, you may be using a different color theme than the one pictured in most screen shots in the book. All exercises will function properly using any color theme, but if you want to configure your interface to match the one shown, complete the following steps.

- 1 Select Edit > Preferences in Windows or Dreamweaver CC > Preferences in macOS.

The Preferences dialog appears.

- 2 Select the Interface category.
- 3 Select the lightest App Theme color.  
Select Solarized Light from the Code Theme menu.



The interface changes to the new theme. Depending on which app theme you select, the code theme may change automatically. The changes are not permanent yet. If you close the dialog, the theme will revert to the original colors.

- 4 Click the Apply button.

The theme changes are now permanent.

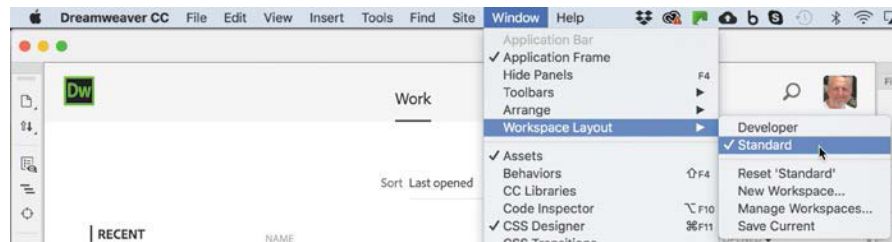
- 5 Click the Close button.

Feel free to change the color theme at any time. Often users select the theme that works best in their normal working environment. The lighter themes work best in well-lighted rooms, while the darker themes work best in indirect or controlled lighting environments used in some design offices. All exercises will work properly in any theme color.

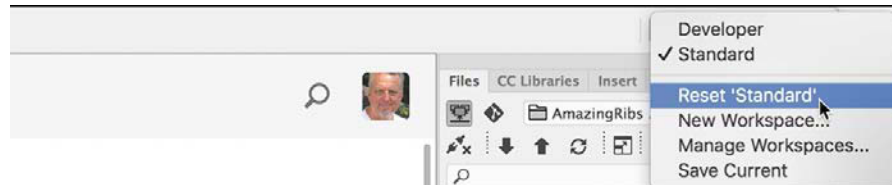
## Setting up the workspace

Dreamweaver CC (2018 release) includes two main workspaces to accommodate various computer configurations and individual workflows. For this book, the Standard workspace is recommended.

- 1 If the Standard workspace is not displayed by default, you can select it from the Window > Workspace menu.



- 2 If the default Standard workspace has been modified—where certain toolbars and panels are not visible (as they appear in the figures in the book)—you can restore the factory setting by choosing Reset 'Standard' from the Workspace drop-down menu.



These same options can be accessed from the Window > Workspace Layout menu.

Most of the figures in this book show the Standard workspace. When you finish the lessons in this book, experiment with each workspace to find the one that you prefer, or build your own configuration and save the layout under a custom name.

For a more complete description of the Dreamweaver workspaces, see Lesson 1, “Customizing Your Workspace.”

## Defining a Dreamweaver site

In the course of completing the following lessons, you will create webpages from scratch and use existing files and resources that are stored on your hard drive. The resulting webpages and assets make up what’s called your *local* site. When you are ready to upload your site to the Internet (see Lesson 11, “Publishing to the Web”), you publish your completed files to a web-host server, which then becomes your *remote* site. The folder structures and files of the local and remote sites are usually mirror images of one another.

The first step is to define your local site.

- 1 Launch Adobe Dreamweaver CC (2018 release) or later.
- 2 Open the Site menu.

◆ **Warning:** You must unzip the lesson files before you create your site definition.



The Site menu provides options for creating and managing standard Dreamweaver sites.

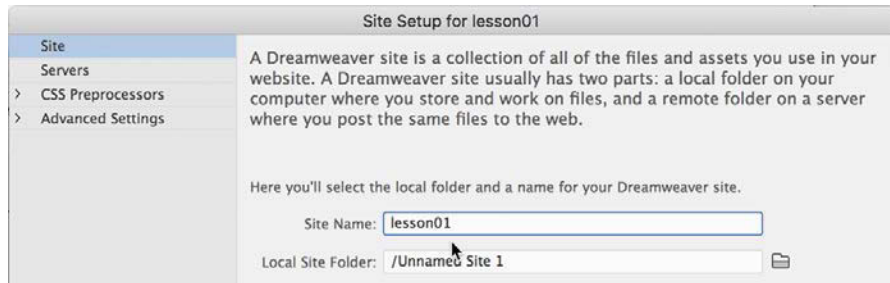
- 3 Choose New Site.



The Site Setup dialog appears.

To create a standard website in Dreamweaver, you need only name it and select the local site folder. The site name should relate to a specific project or client and will appear in the Files panel Site drop-down menu. This name is intended for your own purposes only; it will not be seen by the public, so there are no limitations to the name you can create. Use a name that clearly describes the purpose of the website. For the purposes of this book, use the name of the lesson you intend to complete, such as lesson01, lesson02, lesson03, and so on.

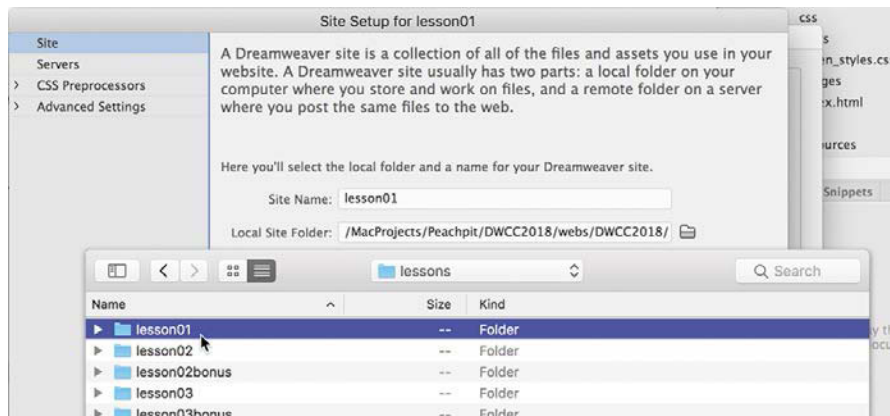
- 4 Type **lesson01** or another name, as appropriate, in the Site Name field.



● **Note:** The main folder that contains the site will be referred to throughout the book as the site root folder.

- 5 Next to the Local Site Folder field, click the Browse For Folder icon.
- 6 Navigate to the appropriate folder containing the lesson files you downloaded from Peachpit.com (as described earlier), and click Select/Choose.

● **Note:** Lesson files must be decompressed prior to defining the site.



You could click Save at this time and begin working on your new website, but you'll add one more piece of handy information.

- 7 Click the arrow next to the Advanced Settings category to reveal the categories listed there.  
Select Local Info.

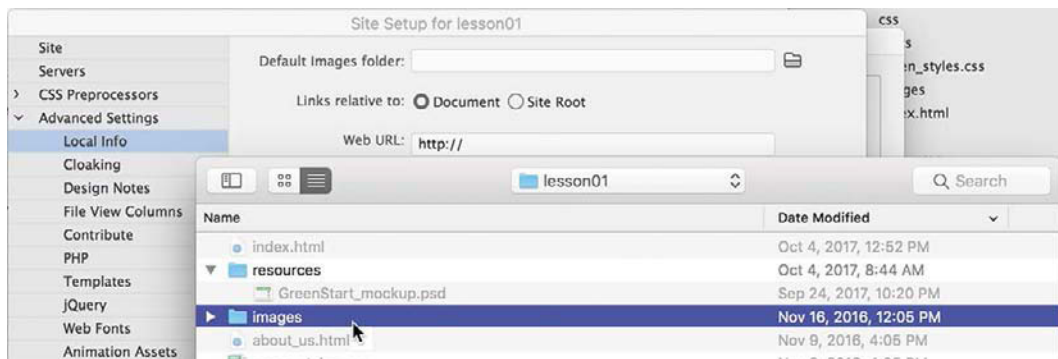


Although it's not required, a good policy for site management is to store different file types in separate folders. For example, many websites provide individual folders for images, PDFs, videos, and so on. Dreamweaver assists in this endeavor by including an option for a default images folder.

Later, as you insert images from other locations on your computer, Dreamweaver will use this setting to automatically move the images into the site structure.

**Note:** The folder that contains the image assets will be referred to throughout the book as the site default images folder or the default images folder.

- 8 Next to the Default Images Folder field, click the Browse For Folder icon. When the dialog opens, navigate to the appropriate images folder for that lesson or site and click Select/Choose.



The path to the images folder appears in the Default Images Folder field. The next step would be to enter your site domain name in the Web URL field.

- 9 Enter **http://green-start.org** for the lessons in this book, or enter your own website URL, in the Web URL field.

**Note:** Resource folders for images and other assets should always be contained within the main site root folder.

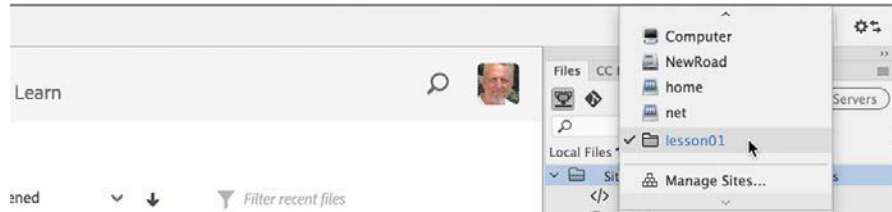
**Note:** The Web URL is not needed for most static HTML sites, but it's required for working with sites using dynamic applications or to connect to databases and a testing server.



You've entered all the information required to begin your new site. In subsequent lessons, you'll add more information to enable you to upload files to your remote and testing servers.

**10** In the Site Setup dialog, click Save.

The Site Setup dialog closes.



In the Files panel, the new site name appears in the site list drop-down menu. As you add more site definitions, you can switch between the sites by selecting the appropriate name from this menu.

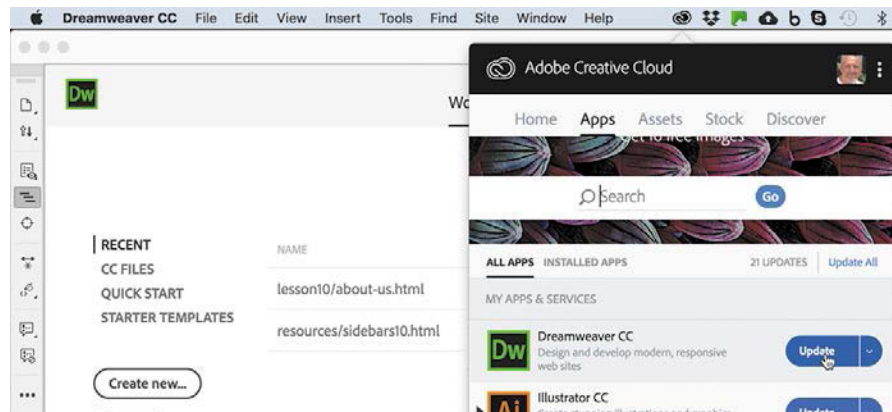
Whenever a site is selected or modified, Dreamweaver will build, or rebuild, a cache of every file in the folder. The cache identifies relationships between the webpages and the assets within sites and will assist you whenever a file is moved, renamed, or deleted to update links or other referenced information.

**11** Click OK to build the cache, if necessary.

Setting up a site is a crucial first step in beginning any project in Dreamweaver. Knowing where the site root folder is located helps Dreamweaver determine link pathways and enables many sitewide options, such as orphaned-file checking and Find and Replace.

## Checking for updates

Adobe periodically provides software updates. To check for updates in the program, choose Help > Updates in Dreamweaver. An update notice may also appear in the Creative Cloud update desktop manager.



For book updates and bonus material, visit your Account page on Peachpit.com and select the Lesson & Update Files tab.

## Additional resources

*Adobe Dreamweaver CC Classroom in a Book (2018 release)* is not meant to replace documentation that comes with the program or to be a comprehensive reference for every feature. Only the commands and options used in the lessons are explained in this book. For comprehensive information about program features and tutorials, refer to these resources:

**Adobe Dreamweaver Learn & Support:** <https://helpx.adobe.com/dreamweaver/tutorials.html> (accessible in Dreamweaver by choosing Help > Dreamweaver Tutorial) is where you can find and browse tutorials, help, and support on Adobe.com.

**Dreamweaver Help:** [helpx.adobe.com/support/dreamweaver.html](https://helpx.adobe.com/support/dreamweaver.html) is a reference for application features, commands, and tools (press F1 or choose Help > Dreamweaver Help).

**Adobe Forums:** [forums.adobe.com](https://forums.adobe.com) lets you tap into peer-to-peer discussions and questions and answers on Adobe products.

**Resources for educators:** [adobe.com/education](https://adobe.com/education) and [edex.adobe.com](https://edex.adobe.com) offer a treasure trove of information for instructors who teach classes on Adobe software. You'll find solutions for education at all levels, including free curricula that use an integrated approach to teaching Adobe software and that can be used to prepare for the Adobe Certified Associate exams.

Also check out these useful links:

**Adobe Add-ons:** [exchange.adobe.com/addons](https://exchange.adobe.com/addons) is a central resource for finding tools, services, extensions, code samples, and more to supplement and extend your Adobe products.

**Adobe Dreamweaver CC product home page:** [adobe.com/products/dreamweaver.html](https://adobe.com/products/dreamweaver.html) has more information about the product.

## Adobe Authorized Training Centers

Adobe Authorized Training Centers offer instructor-led courses and training on Adobe products. Go to [training.adobe.com/training/partner-finder.html](https://training.adobe.com/training/partner-finder.html) to find a directory of AATCs.

# 1 CUSTOMIZING YOUR WORKSPACE

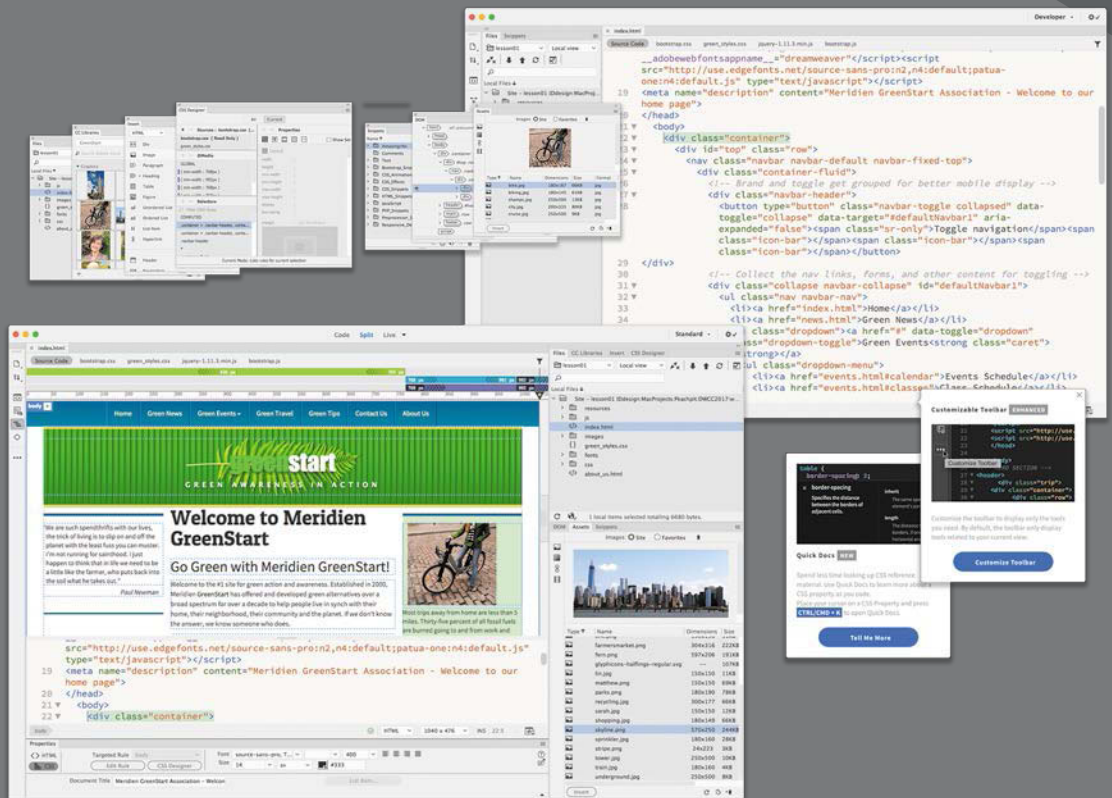
## Lesson overview

In this lesson, you'll familiarize yourself with the Dreamweaver CC (2018 release) program interface and learn how to do the following:

- Use the program Welcome screen
- Switch document views
- Work with panels
- Select a workspace layout
- Adjust toolbars
- Personalize preferences
- Create custom keyboard shortcuts
- Use the Property inspector
- Use the Extract workflow



This lesson will take about 1 hour and 15 minutes to complete. If you have not already done so, please log in to your account on [peachpit.com](https://peachpit.com) to download the project files for this lesson as described in the “Getting Started” section at the beginning of this book and follow the instructions under “Accessing the Lesson Files and Web Edition.” Define a site based on the lesson01 folder.



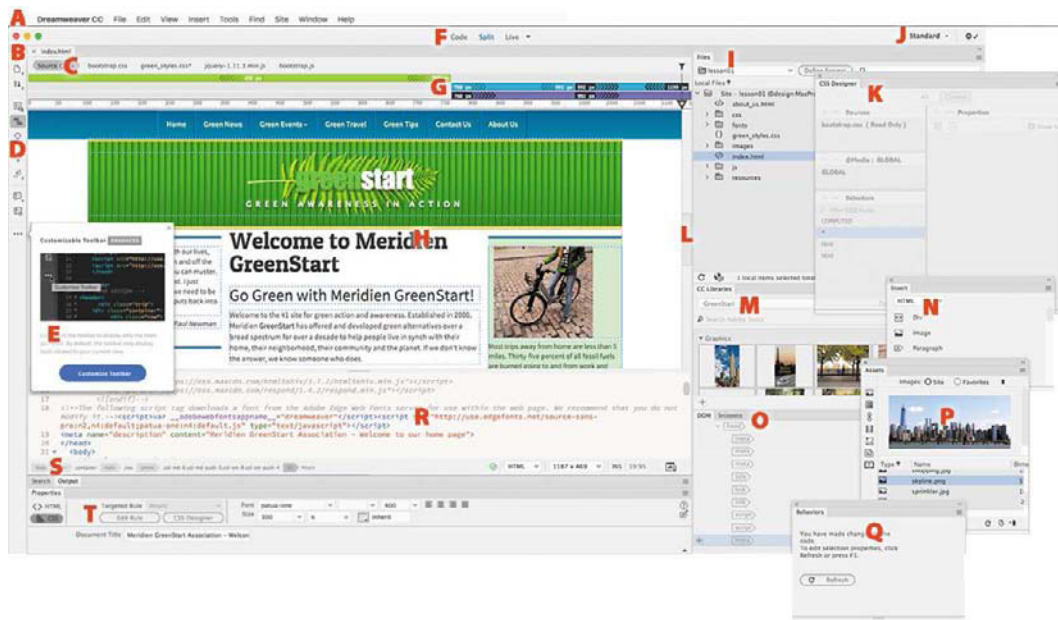
You'd probably need a dozen programs to perform all the tasks that Dreamweaver can do—and none of them would be as fun to use.

# Touring the workspace

**Note:** Before you begin this lesson, download the lesson files and create a new website for lesson01 as described in the “Getting Started” section at the beginning of the book.

Dreamweaver is the industry-leading Hypertext Markup Language (HTML) editor, with good reasons for its popularity. The program offers an incredible array of design and code-editing tools. Dreamweaver offers something for everyone.

Coders love the range of enhancements built into the Code view environment, and developers enjoy the program’s support for a variety of programming languages and code hinting. Designers marvel at seeing their text and graphics appear in an accurate What You See Is What You Get (WYSIWYG) depiction as they work, saving hours of time previewing pages in browsers. Novices certainly appreciate the program’s simple-to-use and power-packed interface. No matter what type of user you are, if you use Dreamweaver, you don’t have to compromise.



- |                                  |   |                             |                             |
|----------------------------------|---|-----------------------------|-----------------------------|
| <b>A</b> Menu bar                | <b>F</b> Document toolbar                   | <b>K</b> CSS Designer       | <b>P</b> Assets panel       |
| <b>B</b> Document tab            | <b>G</b> Visual Media Query (VMQ) interface | <b>L</b> Scrubber           | <b>Q</b> Behaviors panel    |
| <b>C</b> Related files interface | <b>H</b> Live/Design views                  | <b>M</b> CC Libraries panel | <b>R</b> Code view          |
| <b>D</b> Coding toolbar          | <b>I</b> Files panel                        | <b>N</b> Insert panel       | <b>S</b> Tag selectors      |
| <b>E</b> New Features            | <b>J</b> Workspace menu                     | <b>O</b> DOM panel          | <b>T</b> Property inspector |

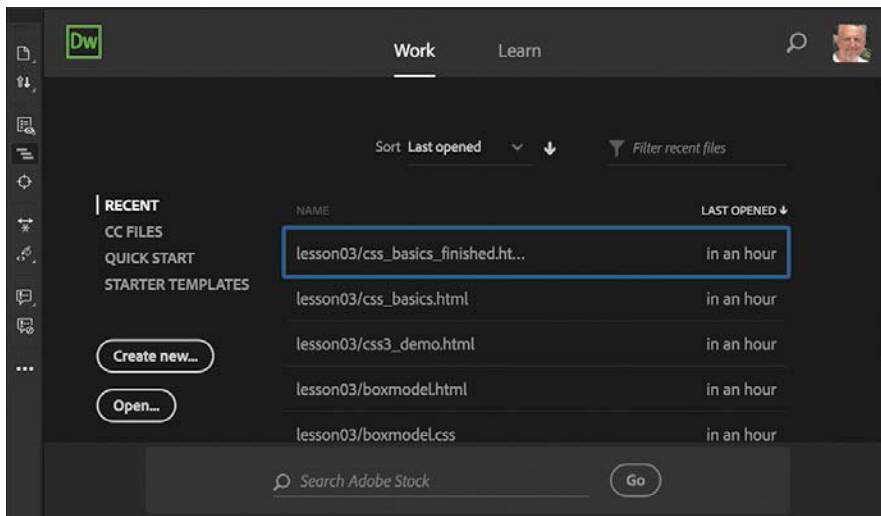
The Dreamweaver interface features a vast array of user-configurable panels and toolbars. Take a moment to familiarize yourself with the names of these components.

You'd think a program with this much to offer would be dense, slow, and unwieldy, but you'd be wrong. Dreamweaver provides much of its power via dockable panels and toolbars that you can display or hide and arrange in innumerable combinations to create your ideal workspace. In most cases, if you don't see a desired tool or panel, you'll find it in the Window menu.

This lesson introduces you to the Dreamweaver interface and gets you in touch with some of the power hiding under the hood. We don't spend a lot of time in the upcoming lessons teaching you how to perform basic activities within the interface; that's the intention of this lesson. So take some time to go through the following descriptions and exercises to familiarize yourself with the basic operations of the program interface. Feel free to refer to this lesson anytime you need a refresher on the program's many dialogs and panels and how they function.

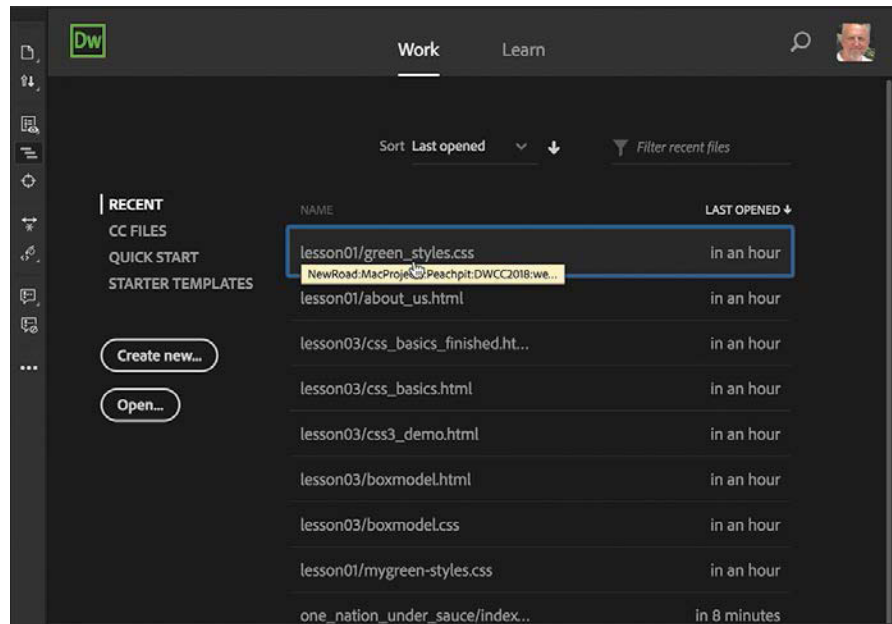
## Using the Start Screen

Once the program is installed and the initial setup is completed, you'll see the new Dreamweaver Start Screen. This screen provides quick access to recent pages, easy creation of a variety of page types, and a direct connection to several key Help resources and tutorials. The Start Screen appears when you first start the program or when no other documents are open. The Start Screen has gotten a facelift in this version of Dreamweaver and deserves a quick review to check out what it offers. For example, it now has four main options: Recent, CC Files, Quick Start, and Starter Templates. Click the name of each option to access these features.



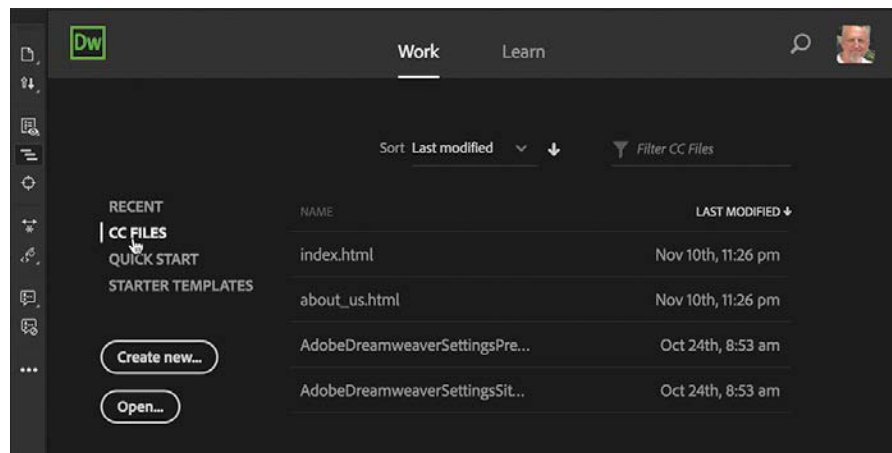
## Recent

When you select the Recent option, Dreamweaver will provide a list of the files you last worked on. The list is dynamic. To reopen a file, simply click its name.



## CC Files

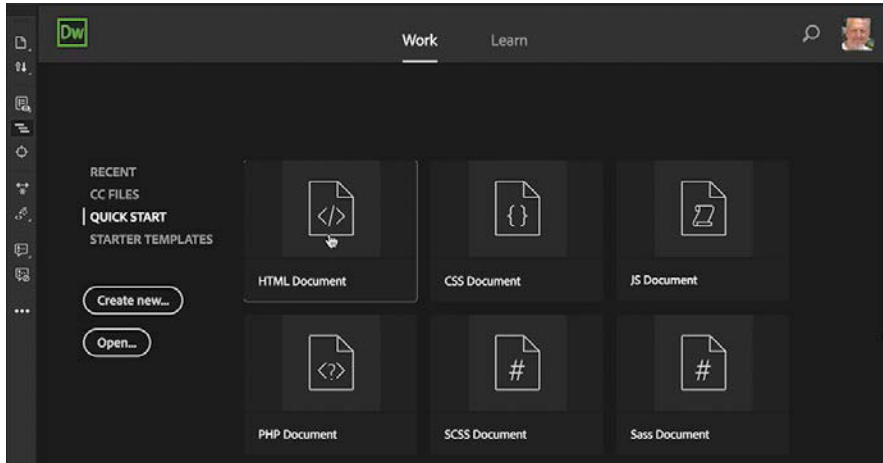
The CC Files option shows a list of any files that you have copied to your Creative Cloud Files folder and that can be edited by or used in Dreamweaver. This will include HTML, CSS, JavaScript, and text files, among others. Files incompatible to Dreamweaver will simply be hidden from view.





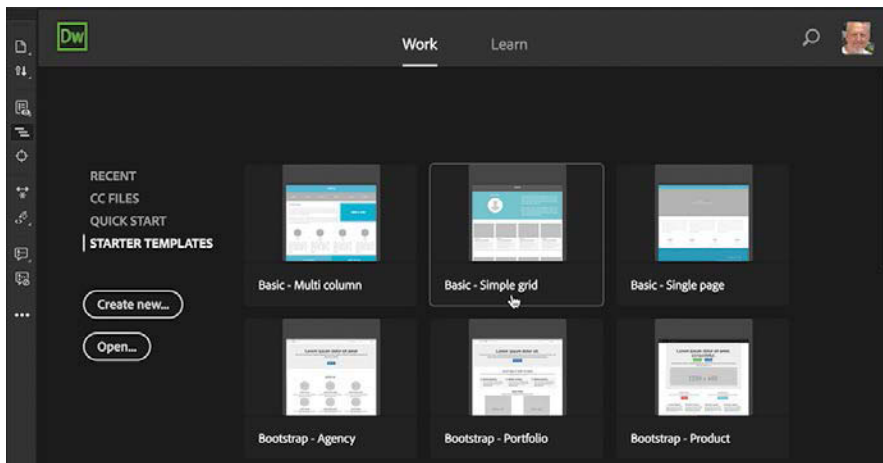
## Quick Start

If the Quick Start tab looks familiar, it's because it has been around in one form or another for many versions of Dreamweaver. As it has always done, it provides instant access to a list of basic web-compatible file types, such as HTML, CSS, JS, PHP, and so on. Just click the file type to start a new document.



## Starter Templates

The Starter Templates option enables you to access predefined starter templates that provide responsive styling to support smartphones and mobile devices, as well as the popular Bootstrap framework.



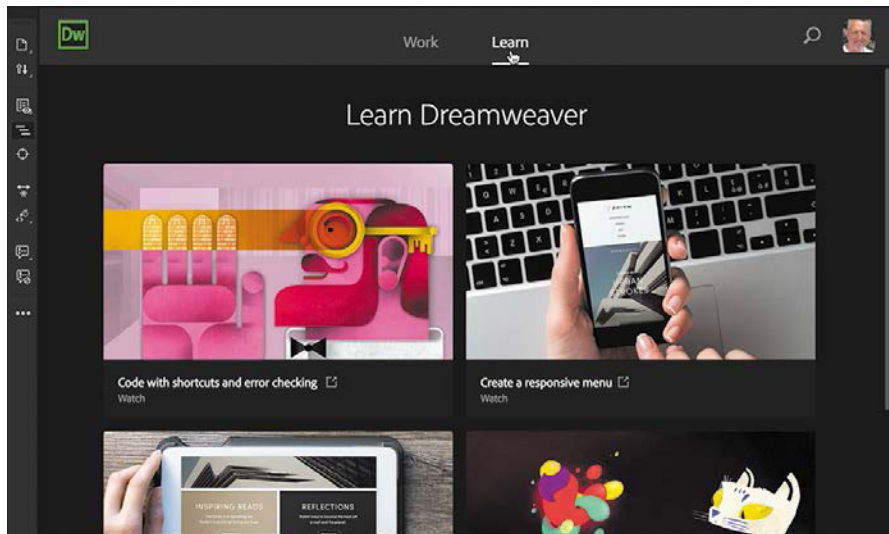
## Create New and Open

The Create New and Open buttons enable you to access the New Document and Open dialogs, respectively. Previous users of Dreamweaver may be more comfortable using these options, which open familiar interfaces for creating new documents or opening existing ones.

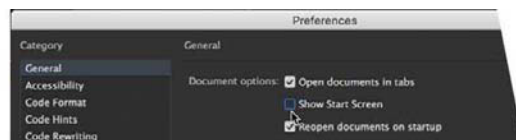
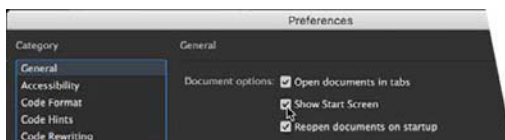


## Learn

When you select the Learn tab in the Start Screen, you will see a list of help topics that will provide guided tours and video overviews of the program overall, as well as a selection of new tools and workflows that you may review. This option is updated dynamically as new features are added to Dreamweaver or improved.

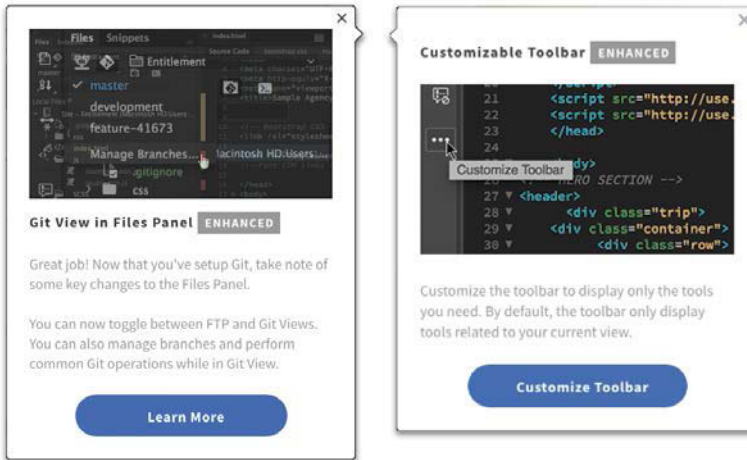



If you do not want to see the Start Screen anymore, you can disable it by accessing the option in General settings in Dreamweaver Preferences and deselecting the checkbox.



# Exploring New Feature guides

In Dreamweaver CC, the New Feature guides pop up from time to time as you access various tools, features, or interface options. The pop-ups call your attention to new features or workflows that have been added to the program and provide handy tips to help you get the most out of them.



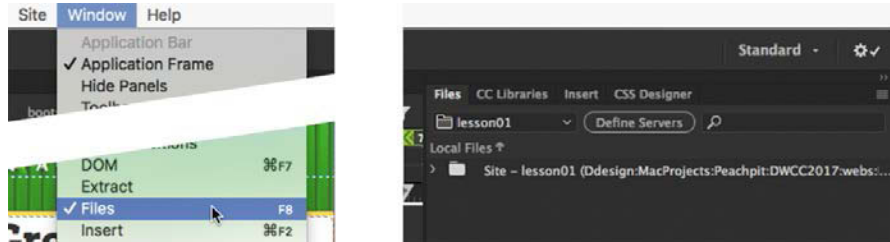
When a tip appears, it may provide more extensive information or a tutorial you can access by following the prompts in the pop-up window. When you are finished, you can close the pop-up by clicking the Close  icon in the upper-right corner of each tip. When you close the tip, it will not appear again. You can display the tips again by selecting Help > Reset Contextual Feature Tips.

## Setting interface preferences

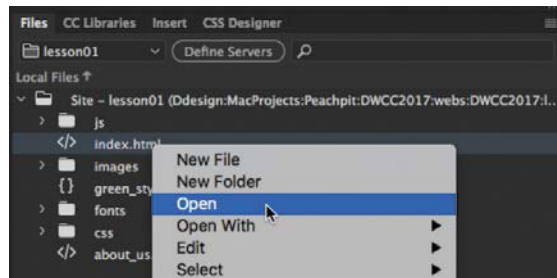
Dreamweaver provides users with extensive controls over the basic program interface. You can set up, arrange, and customize the various panels and menus to your own liking. One of the first places you should visit before you begin the lessons in this book is the Dreamweaver Preferences dialog.

As with other Adobe applications, the Preferences dialog provides specific settings and specifications that dictate how the program looks and functions. Preference settings are normally persistent, meaning that they remain in effect even after the program is shut down and relaunched. There are far too many options in this dialog to cover in one lesson, but let's make a couple of changes to give you a taste of what you can do. Some features of the program are not visible until you create or open a file for editing.

- 1 Define a new site based on the lesson01 folder as described in the “Getting Started” section at the beginning of the book.
- 2 Select Window > Files or press F8 to display the Files panel.



- 3 In the File panel, select **lesson01** from the drop-down menu and reveal the site file list in the panel, if necessary.
- 4 Right-click the file **index.html** from the lesson01 folder and choose Open from the context menu. You can also double-click a file in the list to open it.



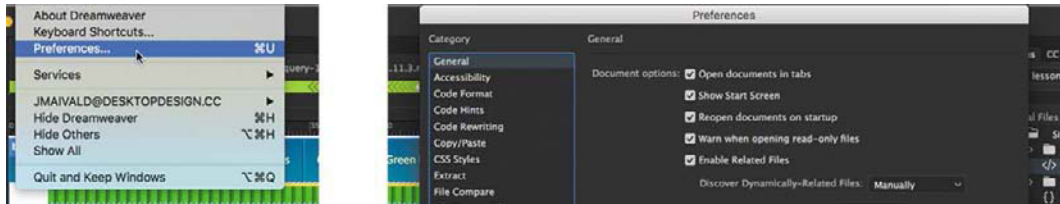
The file opens in the document window. If the program has not been used previously, the file should open in Live view. To get the full appreciation of the upcoming changes, let's also display the code-editing interface at the same time.

- 5 Select Split view at the top of the document window, if necessary.



Dreamweaver is sporting a new dark color scheme in Code view. Some users love it; some hate it. You can change it completely or merely tweak it in Preferences. If you have already changed your interface theme skip to the next exercise.

- 6 In Windows, select Edit > Preferences.  
In macOS, select Dreamweaver CC > Preferences.



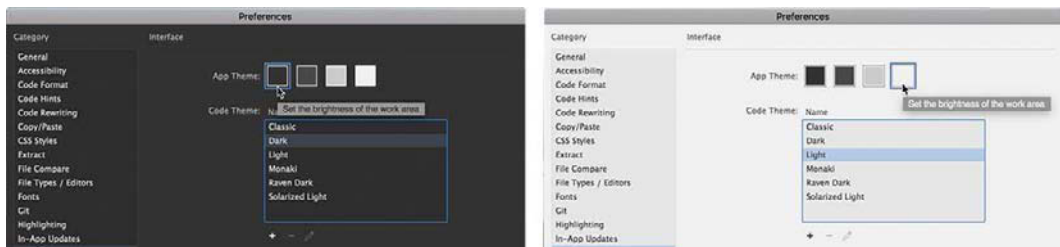
The Preferences dialog appears.

- 7 Select the Interface category.

As you see from the dialog, Dreamweaver gives you control over the overall color theme as well as the code-editing window. You may change one or both.

Many designers work in controlled lighting environments and prefer the dark interface themes that are now the default in most Adobe applications. For the purposes of this book, all screen shots from this point forward are taken in the lightest theme. This saves ink during printing, for less impact on the environment. You may continue to use the dark theme if you prefer, or switch now so your own screen will match the illustrations in the book.

- 8 In the App Theme window, select the lightest theme.



The theme of the entire interface changes to light gray. You will notice that the Code Theme setting changes to *Light* at the same time. If you prefer, you can switch the code theme back to *Dark* or choose another. The screen shots for code editing use the *Solarized Light* theme.

- 9 Select *Solarized Light* in the Code Theme window.

At the moment, the changes are not permanent. If you click the Close button in the dialog, the theme would revert to dark.

**10** Click Apply in the lower-right corner of the dialog.

The changes have now been applied.

**11** Click Close.

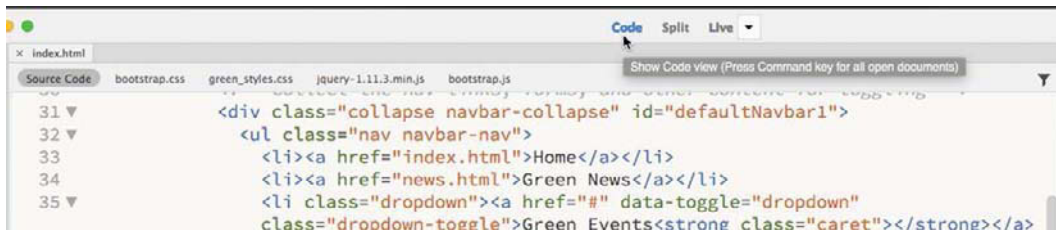
Saved preferences persist from session to session and through each workspace.

## Switching and splitting views

Dreamweaver offers dedicated environments for coders and designers.

### Code view

Code view focuses the Dreamweaver workspace exclusively on the HTML code and a variety of code-editing productivity tools. To access Code view, click the Code view button in the Document toolbar.

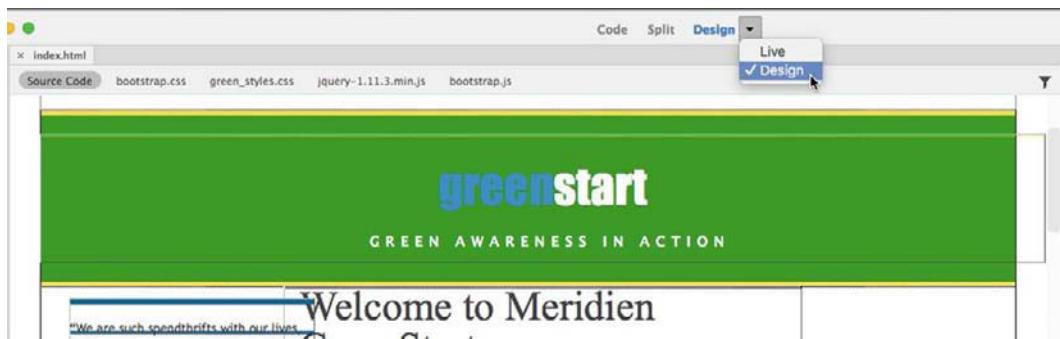


Code view

### Design view

Design view shares the document window with Live view and focuses the Dreamweaver workspace on its classic WYSIWYG editor. In the past, Design view provided a reasonable facsimile of the webpage as it would appear in a browser, but with the advancements in CSS and HTML, it is no longer as WYSIWYG as it once was. Although it can be difficult to use in some situations, you'll find that it does offer an interface that speeds up the creation and editing of your content. And at the moment, it's also the only way to access certain Dreamweaver tools or workflows, as you will see in the upcoming lessons.

To activate Design view, choose it from the Design/Live view drop-down menu in the Document toolbar. Most HTML elements and basic cascading style sheets (CSS) formatting will be rendered properly within Design view, with the major exceptions being CSS3 properties; dynamic content; interactivity, such as link behaviors, video, audio, and jQuery widgets; and some form elements. In previous versions of Dreamweaver, you spent most of your time in Design view. That will no longer be the case.



Design view

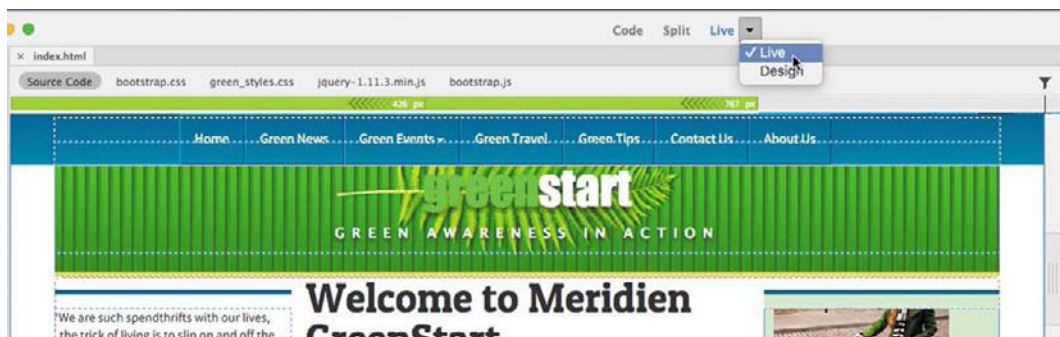
## Live view

Live view is the default workspace of Dreamweaver CC. It speeds up the process of developing modern websites by allowing you to *visually* create and edit webpages and web content in a browser-like environment, and it supports and previews most dynamic effects and interactivity.

To use Live view, choose it from the Design/Live view drop-down menu in the Document toolbar. When Live view is activated, most HTML content will function as it would in an actual browser, allowing you to preview and test most dynamic applications and behaviors.

In previous versions of Dreamweaver, the content in Live view was not editable. That has changed. You can edit text, add and delete elements, create classes and IDs, and even style elements, all in the same window. It's like working on a live webpage right inside Dreamweaver.

Live view is integrally connected to the CSS Designer, allowing you to create and edit advanced CSS styling and build fully responsive webpages without having to switch views or waste time previewing the page in a browser.



Live view



## Split view

● **Note:** Split view can pair Code view with either Design view or Live view.

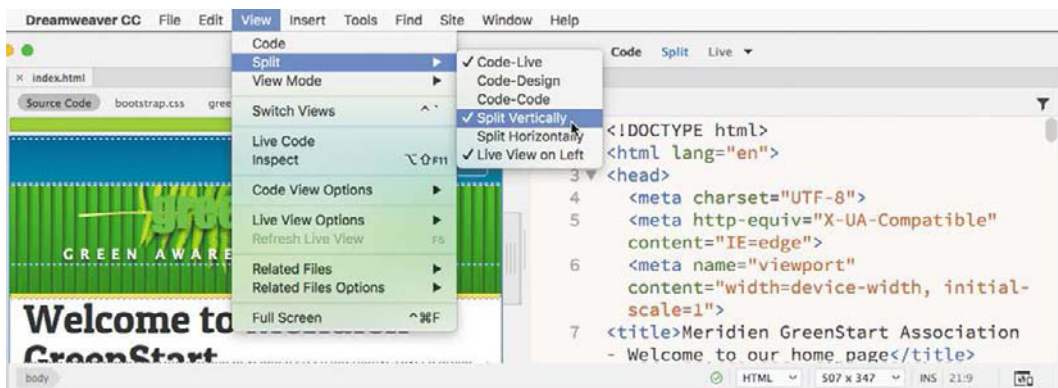
Split view provides a composite workspace that gives you access to both the design and the code simultaneously. Changes made in either window update in the other in real time.

To access Split view, click the Split view button in the Document toolbar. Dreamweaver splits the workspace horizontally by default. When using Split view, you can display Code view with either Live view or Design view.



Split view (horizontal)


You can split the screen vertically by selecting the Split Vertically option on the View menu. When the window is split, Dreamweaver also gives you options for how the two windows display. You can put the code window on the top, bottom, left, or right. You can find all these options in the View menu. Most screen shots in the book that show Split view show Design or Live view at top or right.




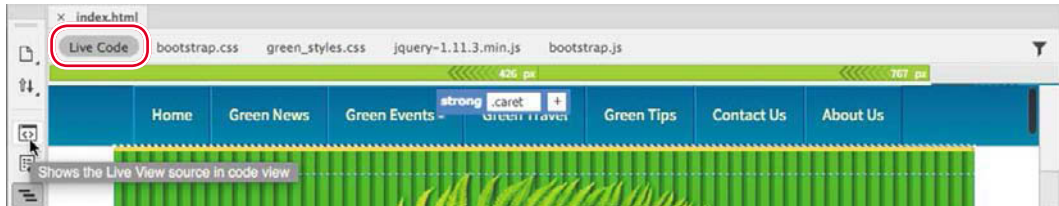
Split view (vertical)



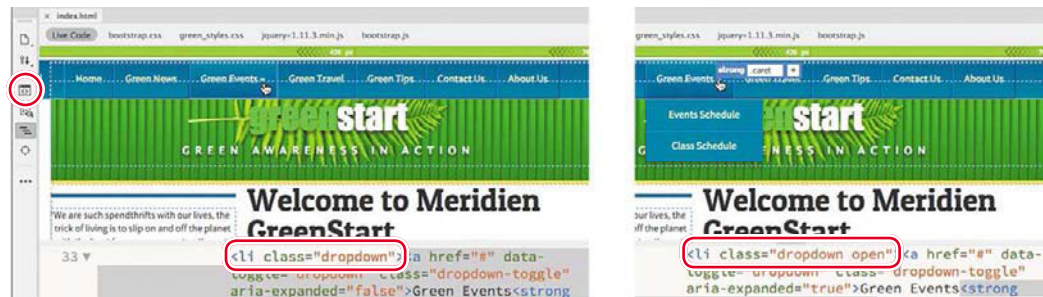
## Live Source Code

Live Source Code is an HTML code-troubleshooting display mode available whenever Live view is activated. To access Live Source Code, activate Live view and then click the Live Source Code icon  in the toolbox at the left side of the document window. While active, Live Source Code displays the HTML code as it would appear in a live browser on the Internet and gives you a peek at how the code changes when the visitor interacts with various parts of the page.


**Note:** The Live Source Code icon may not appear on the Common toolbar by default. You may need to activate it using the Customize Toolbar  icon.



You can see this interaction firsthand by clicking the *Green Events* menu item to open the drop-down menu. In Code view, you will see that the menu item starts with the class `dropdown` and that the class `open` is then added to the code interactively. The open class is then removed when you close the menu. Without the Live Source Code, you would not be able to see this interaction and behavior.




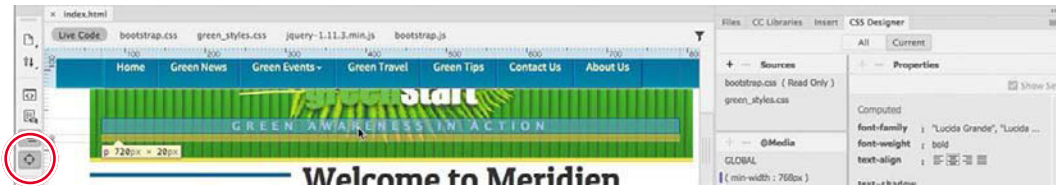
Live Source Code mode

Be aware that while Live Source Code is active, you will not be able to edit the HTML code, although you can still modify external files, such as linked style sheets. To disable Live Source Code, click the Live Source Code icon  again to toggle the mode off.

## Inspect mode

Inspect mode is a CSS troubleshooting display mode that is available whenever Live view is activated. It is integrated with the CSS Designer and allows you to rapidly identify CSS styles applied to content within the page by moving the mouse cursor over elements in the webpage. Clicking an element freezes the focus on that item.

The Live view window highlights the targeted element and displays the pertinent CSS rules applied or inherited by that element. You can access Inspect mode at any time by clicking the Live view icon whenever an HTML file is open and then clicking the Inspect icon  in the Common toolbar.



Inspect mode

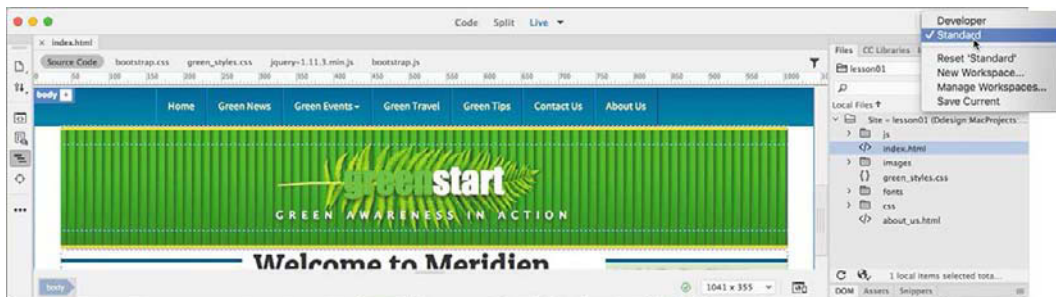
## Selecting a workspace layout

A quick way to customize the program environment is to use one of the prebuilt workspaces in Dreamweaver. Experts have optimized these workspaces to put the tools you need at your fingertips.

Dreamweaver CC (2018 release) includes two prebuilt workspaces: Standard and Developer. To access these workspaces, choose them from the Workspace menu, located at the upper-right side of the program window.

### Standard workspace

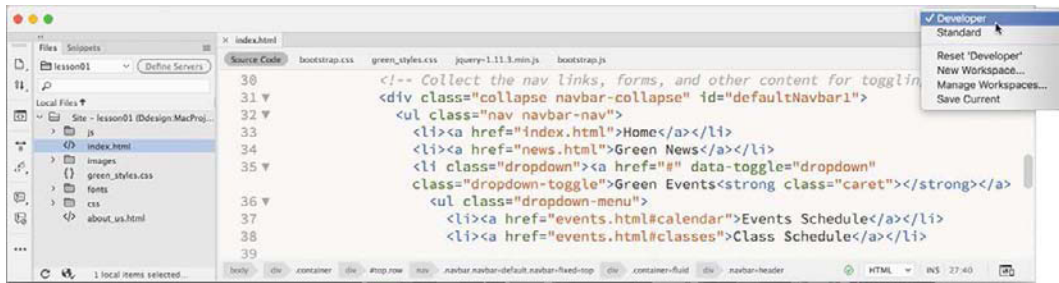
The Standard workspace focuses the available screen real estate on the Design and Live view window. Standard is the default workspace for screen shots in this book.



Standard workspace

## Developer workspace

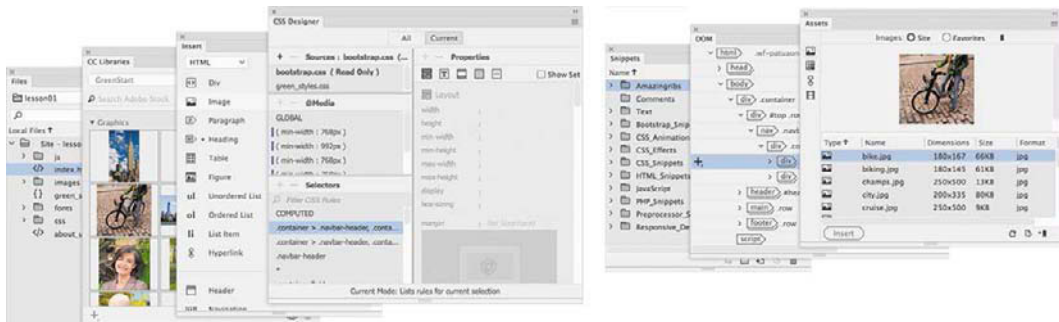
The Developer workspace provides a code-centric layout of tools and panels ideal for coders and programmers. The workspace is focused on Code view.



Developer workspace

## Working with panels

Although you can access most commands from the menus, Dreamweaver scatters much of its power in user-selectable panels and toolbars. You can display, hide, arrange, and dock panels at will around the screen. You can even move them to a second or third video display if you desire.



Standard panel grouping

The Window menu lists all the panels available in the program. If you do not see a desired panel on the screen, choose it from the Window menu. A checkmark ✓ appears next to its name in the menu to indicate that the panel is open. Occasionally, one panel may lie behind another on the screen and be difficult to locate. In such situations, simply choose the desired panel from the Window menu and the panel will rise to the top of the stack.

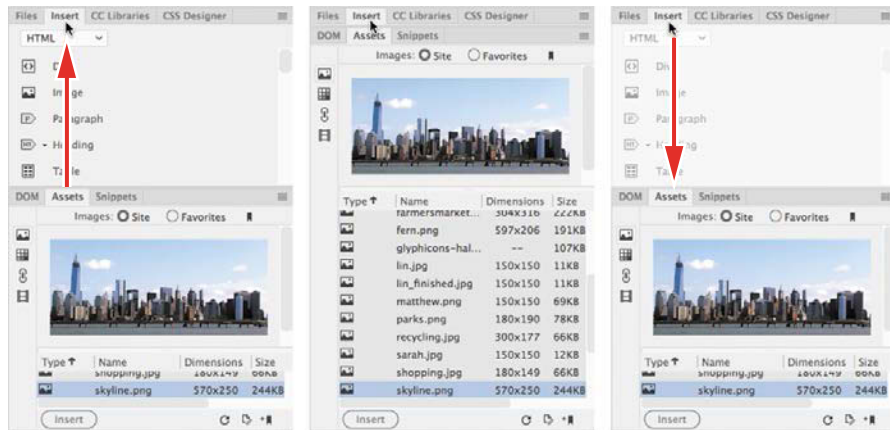
## Minimizing panels

To create room for other panels or to access obscured areas of the workspace, you can minimize or expand individual panels in place. To minimize a standalone panel, double-click the tab containing the panel name. To expand the panel, click the tab once.

Minimizing a panel by double-clicking its tab

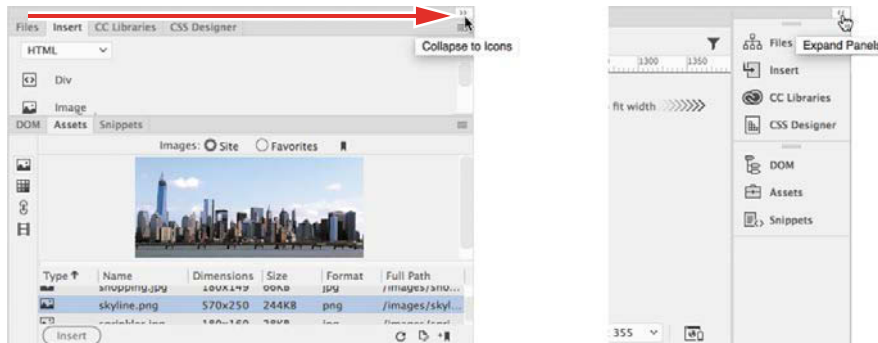


Minimizing one panel in a stack using its tab



To recover more screen real estate, you can minimize panel groups or stacks down to icons by double-clicking the title bar. You can also minimize the panels to icons by clicking the double-arrow icon in the panel title bar. When panels are minimized to icons, you access an individual panel by clicking its icon. The selected panel will appear on the left or right of the icon, wherever room permits.

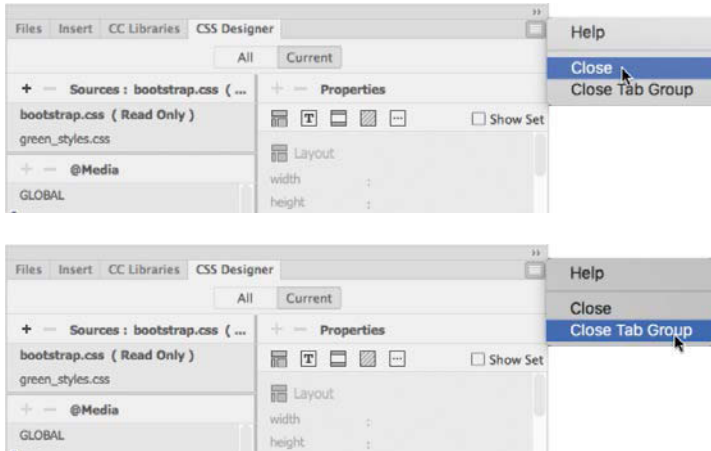
Collapsing a panel to icons



## Closing panels and panel groups

Each panel or panel group may be closed at any time. You can close a panel or panel group in several ways; the method often depends on whether the panel is floating, docked, or grouped with another panel.

To close an individual panel that is docked, right-click in the panel tab and choose Close from the context menu. To close an entire group of panels, right-click any tab in the group and choose Close Tab Group.



To close a floating panel or panel group, click the Close icon that appears in the left corner of the title bar of the panel or panel group. To reopen a panel, choose the panel name from the Window menu. Reopened panels will sometimes appear floating in the interface. You may use them this way or attach, or dock, them to the sides, top, or bottom of the interface. You will learn how to dock panels later.

## Dragging

You can reorder a panel tab by dragging it to the desired position within the group.

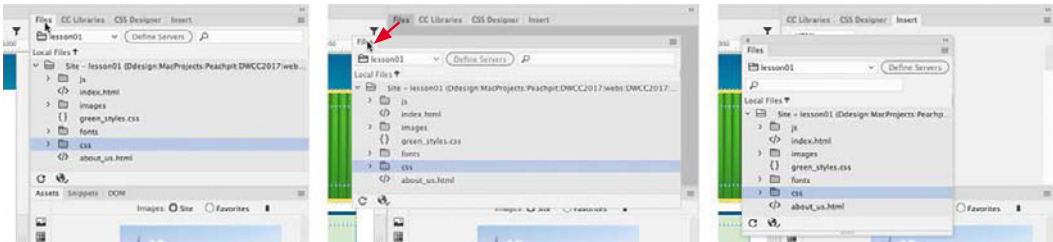


Dragging a tab to change its position



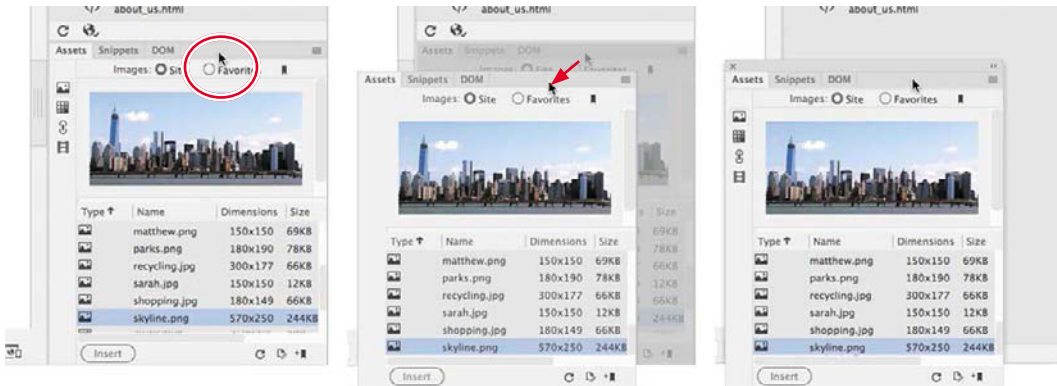
## Floating

A panel that is grouped with other panels can be floated separately. To float a panel, drag it from the group by its tab.



Pulling a panel out by its tab

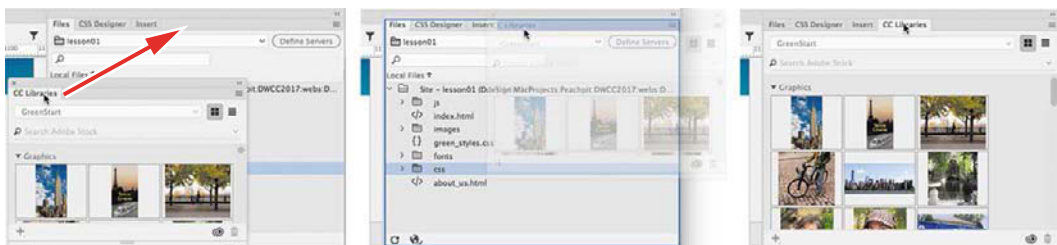
To reposition panels, groups, and stacks in the workspace, simply drag them by the title bar. To pull out a single panel group when it's docked, grab it by the tab bar.



Dragging a whole docked panel group to a new position

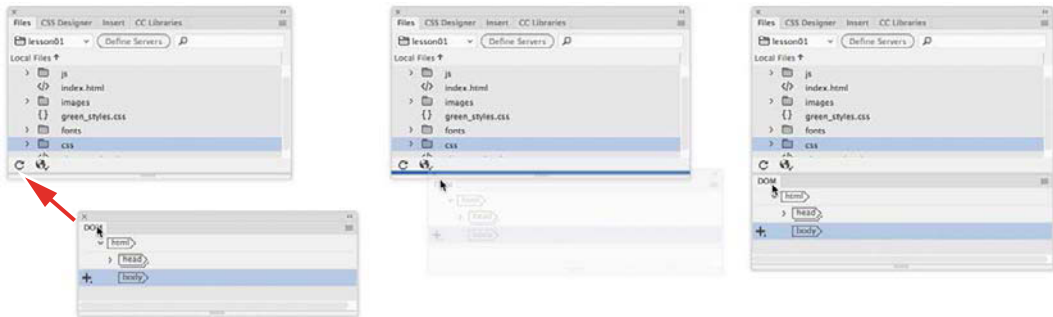
## Grouping, stacking, and docking

You can create custom groups by dragging one panel into another. When you've moved the panel to the correct position, Dreamweaver highlights the area, called the *drop zone*, in blue. Release the mouse button to create the new group.



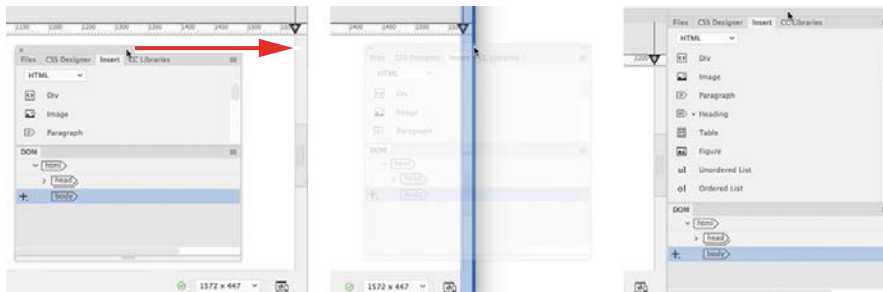
Creating new groups

In some cases, you may want to keep both panels visible simultaneously. To stack panels, drag the desired tab to the top or bottom of another panel. When you see the blue drop zone appear, release the mouse button.



Creating panel stacks

Floating panels can be docked to the right, left, or bottom of the Dreamweaver workspace. To dock a panel, group, or stack, drag its title bar to the edge of the window on which you wish to dock. When you see the blue drop zone appear, release the mouse button.



Docking panels

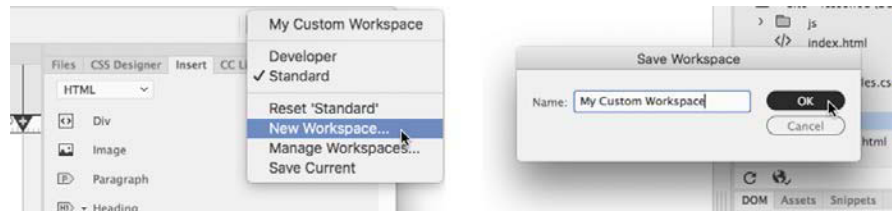
## Personalizing Dreamweaver

As you continue to work with Dreamweaver, you'll devise your own optimal workspace of panels and toolbars for each activity. You can store these configurations in a custom workspace of your own naming.

## Saving a custom workspace

To save a custom workspace, create your desired configuration of panels, choose New Workspace from the Workspace menu, and then give it a custom name.

Saving a custom workspace



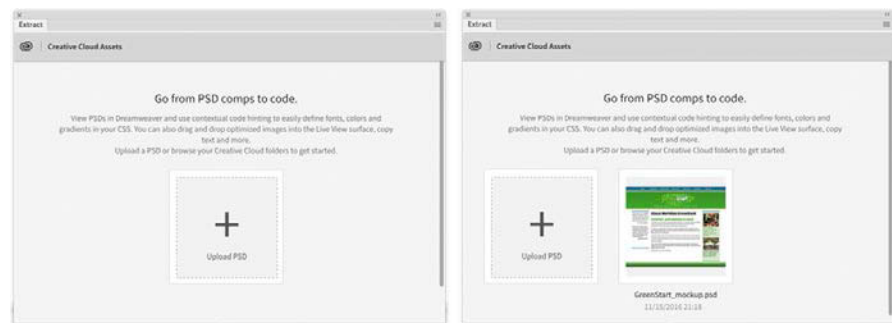
## Working with Extract

Extract is a newer workflow that allows you to create CSS styles and image assets from a Photoshop-based mockup. You can create your webpage design using text and linked or embedded image layers and post the file to Creative Cloud, where Dreamweaver can access the styles, colors, and images to help you build your basic site design.

Build your design in Photoshop using text, images, and effects stored in layers.



Post your file to your Creative Cloud online folder right inside Dreamweaver.







Access the various layers from the Extract panel inside Dreamweaver, copy styles and text, and even download image assets.

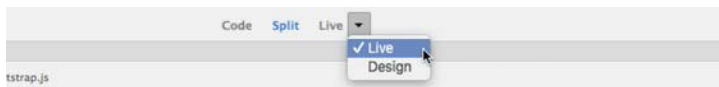
Try these features yourself by uploading **GreenStart\_mockup.psd**, in the lesson01 resources folder, to your Creative Cloud account online folder. Go to [helpx.adobe.com/creative-cloud/help/sync-files.html](https://helpx.adobe.com/creative-cloud/help/sync-files.html) to learn how to upload files to your Creative Cloud account. In Lesson 5, “Creating a Page Layout,” you will learn how to extract CSS styling and image assets from a Photoshop mockup to build a layout for your site template.

## Working with toolbars

Some program features are so handy you may want them to be available all the time in toolbar form. Two of the toolbars—Document and Standard—appear horizontally at the top of the document window. The Common toolbar, however, appears vertically on the left side of the screen. You can display the desired toolbar by choosing it from the Window menu.

### Document toolbar

The document toolbar appears at the very top of the program interface and provides onscreen commands for switching views from Live, Design, Code, and Split views. You can enable this toolbar by selecting Window > Toolbars > Document when a document is open.



Document toolbar

### Standard toolbar


The Standard toolbar appears between the Related Files interface and the document window and provides handy commands for various document and editing tasks, such as creating, saving, or opening documents; copying, cutting, and pasting content; and so on. You can enable this toolbar by selecting Window > Toolbars > Standard when a document is open.



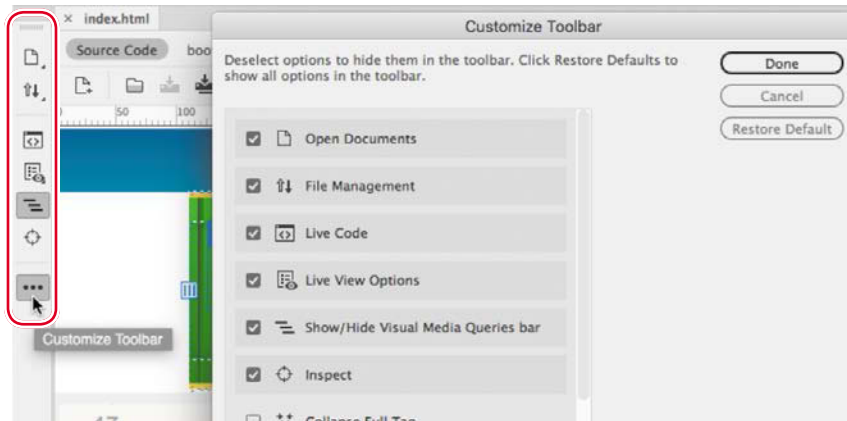
Standard toolbar

## Common toolbar

The Common toolbar appears on the left side of the program window and provides a variety of commands for working with code and HTML elements. The toolbar displays six tools by default in Live and Design view. But insert the cursor in the code window and you may see several more.

The Common toolbar was named the Coding toolbar in previous version of Dreamweaver, and in CC 2018 it is now user customizable. You can add and remove tools by selecting the Customize Toolbar  icon. Be aware that some tools will be displayed and active only when using the Code view window.

Common toolbar  
and dialog



## Creating custom keyboard shortcuts

Another powerful feature of Dreamweaver is the ability to create your own keyboard shortcuts as well as edit existing ones. Keyboard shortcuts are loaded and preserved independently of workspaces.

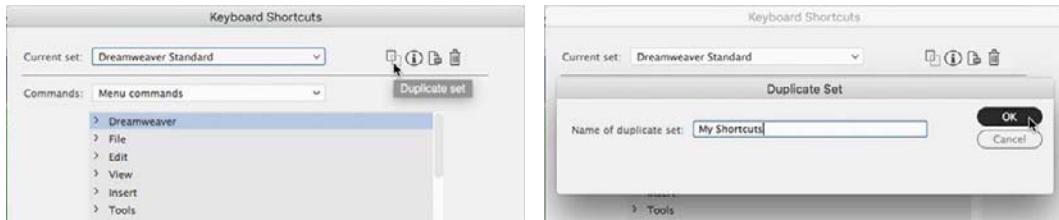
Is there a command you can't live without that doesn't have a keyboard shortcut or uses one that's inconvenient? Create one of your own.

- 1 Choose Edit > Keyboard Shortcuts (Windows) or Dreamweaver CC > Keyboard Shortcuts (macOS).

You cannot modify the default shortcuts, so you have to create a list of your own.

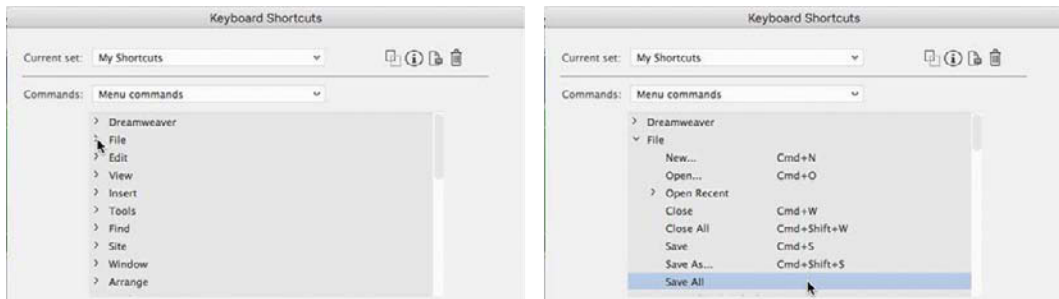
- 2 Click the Duplicate Set icon  to create a new set of shortcuts.

- 3 Enter a name in the Name Of Duplicate Set field. Click OK.



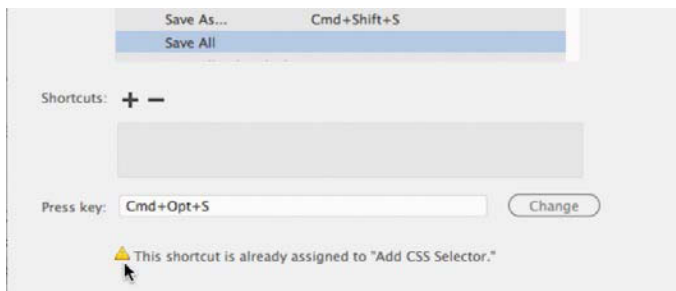
- 4 Choose Menu Commands from the Commands pop-up menu.

- 5 In the Commands window, choose File > Save All.



Note that the Save All command does not have an existing shortcut, although you'll use this command frequently in Dreamweaver.

- 6 Insert the cursor in the Press Key field.  
Press Ctrl+Alt+S/Cmd+Opt+S.



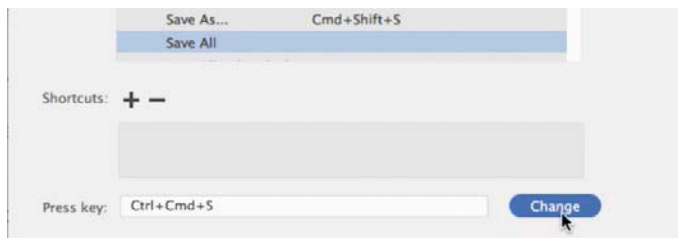
Note the error message indicating that the keyboard combination you chose is already assigned to a command. Although we could reassign the combination, let's choose a different one.

- 7 Press Ctrl+Alt+Shift+S/Control+Cmd+S.

This combination is not currently being used, so let's assign it to the Save All command.

● **Note:** The default keyboard shortcuts are locked and cannot be edited. But you can duplicate the set, save it under a new name, and modify any shortcut within that custom set.

- 8 Click the Change button.



The new shortcut is now assigned to the Save All command.

- 9 Click OK to save the change.

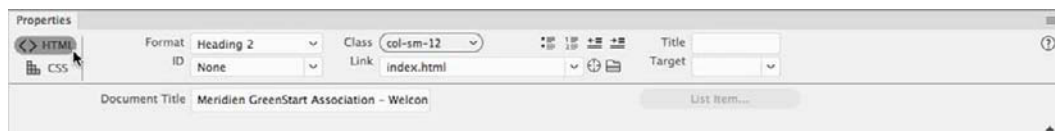
You have created your own keyboard shortcut—one you can use in upcoming lessons. Whenever an instruction in one of the lessons says “save all files” use this keyboard shortcut.

## Using the Property inspector

One tool vital to your workflow is the Property inspector. In the predefined Dreamweaver workspaces, the Property inspector is no longer a default component. If it is not visible in your program interface, you can display it by selecting Window > Properties and then dock it to the bottom of the document window, as described earlier. The Property inspector is context-driven and adapts to the type of element you select.

### Using the HTML tab

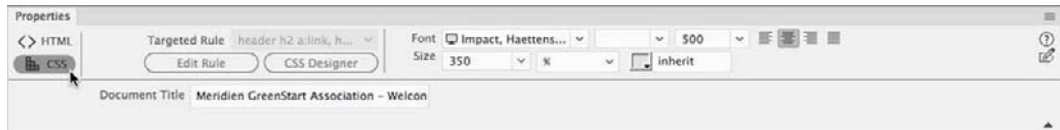
Insert the cursor into any text content on your page and the Property inspector provides a means to quickly assign some basic HTML codes and formatting. When the HTML button is selected, you can apply heading or paragraph tags as well as bold, italics, bullets, numbers, and indenting, among other formatting and attributes. The Document Title metadata field is also available in the bottom half of the Property inspector. Enter your desired document title in this field, and Dreamweaver adds it automatically to the document <head> section. If you don't see the full Property inspector, click the triangle icon in the lower-right corner of the panel to expand its display.



HTML Property inspector

## Using the CSS tab

Click the CSS button to quickly access commands to assign or edit CSS formatting.



CSS Property inspector

## Accessing image properties

Select an image in a webpage to access the image-based attributes and formatting controls of the Property inspector.

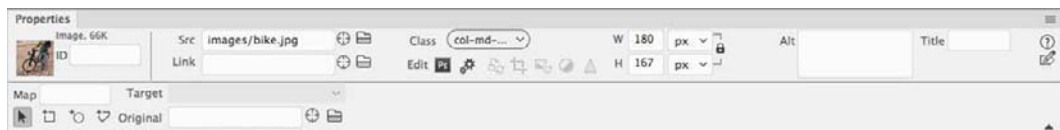


Image Property inspector

## Accessing table properties

To access table properties, insert your cursor in a table and then click the table tag selector at the bottom of the document window.

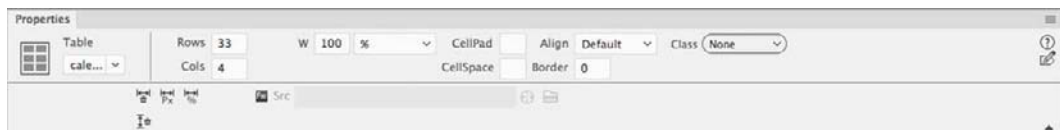


Table Property inspector

## Using the Related Files interface

Webpages are often built with multiple external files that provide styling and programming assistance. Dreamweaver enables you to see all the files linked to, or referenced by, the current document by displaying the filenames in the Related Files interface at the top of the document window. This interface displays the name of any external file and will actually display the contents of each file—if the contents are available—when you simply select the filename in the display.



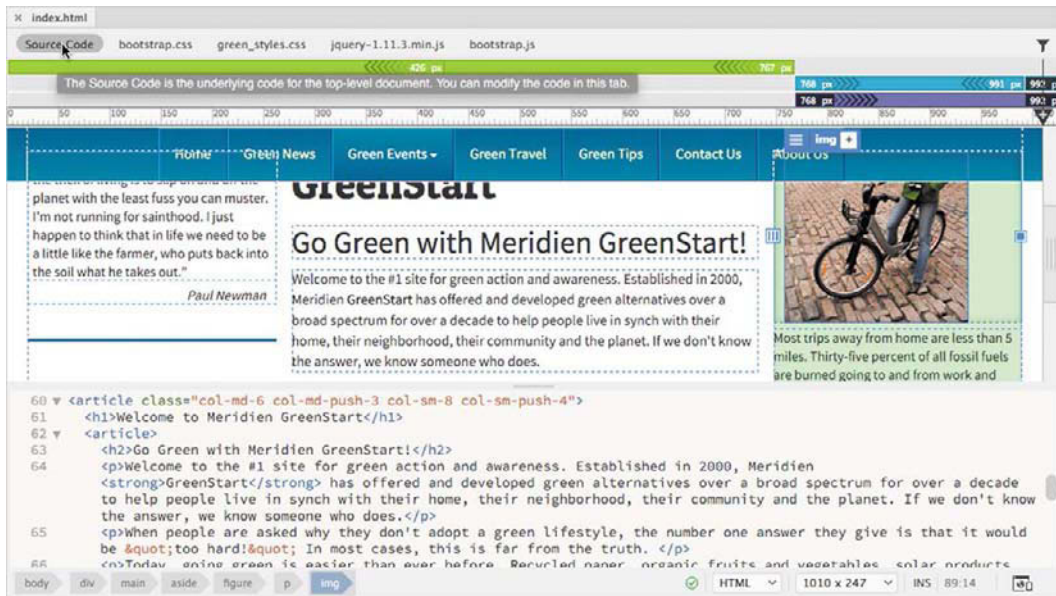
The Related Files interface lists all external files linked to a document.

To view the contents of the referenced file, click the name. If you are in Live or Design view, Dreamweaver splits the document window and shows the contents of the selected file in the Code view window. If the file is stored locally, you'll even be able to edit the contents of the file when it's selected.



Use the Related Files interface to edit locally stored files.

To view the HTML code contained within the main document, click the Source Code option in the interface.

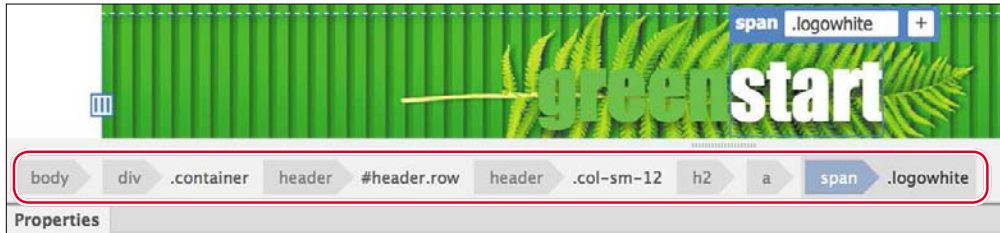


Choose the Source Code option to see the contents of the main document.



# Using tag selectors

One of the most important features of Dreamweaver is the tag selector interface that appears at the bottom of the document window. This interface displays the tags and element structure in any HTML file pertinent to the insertion point of, or that is selected by, the cursor. The display of tags is hierarchical, starting at the document root at the left of the display and listing each tag or element in order based on the structure of the page and the selected element.



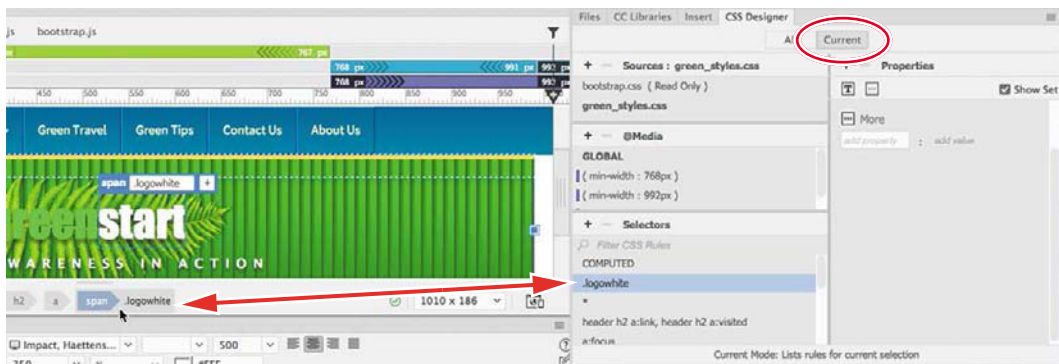
The display in the tag selector interface mimics the structure of the HTML code based on your selection.

The tag selectors also enable you to select any of the elements displayed by simply clicking a tag. When a tag is selected, all the content and child elements contained within that tag are also selected.



Use the tag selectors to select elements.

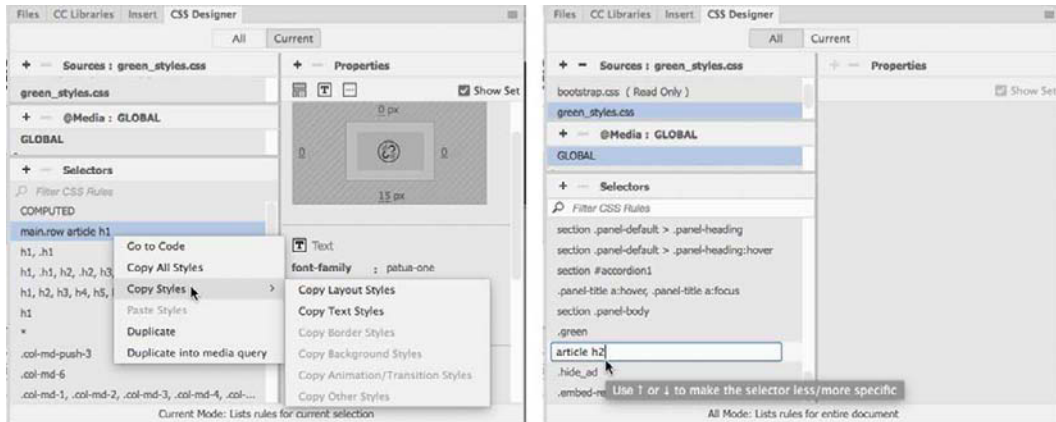
The tag selector interface is closely integrated with the CSS Designer panel. You may use the tag selectors to help you style content or to cut, copy, paste, and delete elements.



The tag selector is closely integrated with the styling and editing of elements.

# Using the CSS Designer

The CSS Designer is a powerful tool for visually creating, editing, and troubleshooting CSS styling. CSS Designer has gained new productivity enhancements for copying and pasting CSS styles from one rule to another. You can also decrease or increase the specificity of new selector names by pressing the up or down arrow keys, respectively.

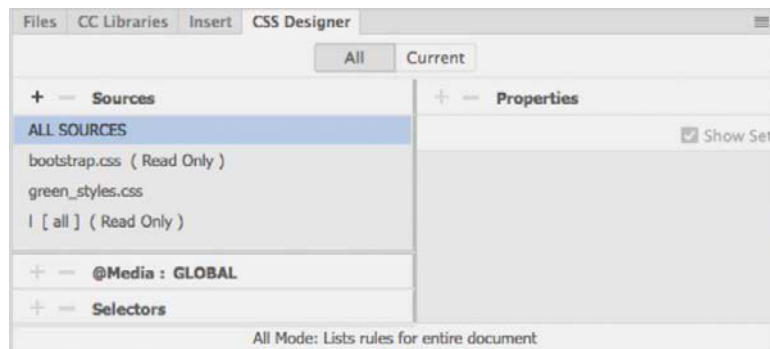


Copy and paste styles from one rule to another (left). Make selectors more or less specific by using the arrow keys (right).

The CSS Designer panel consists of four windows: Sources, @Media, Selectors, and Properties.

## Sources

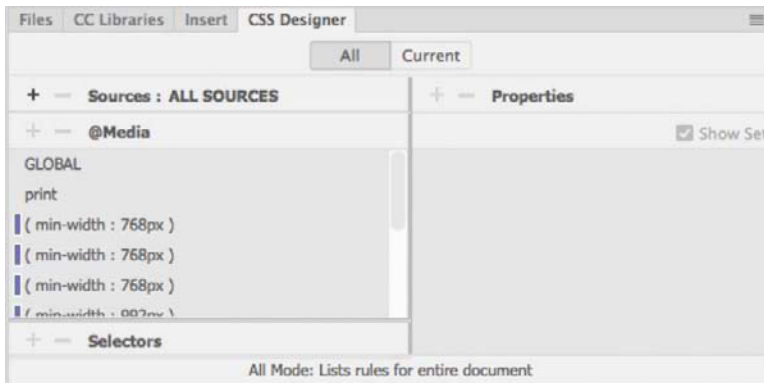
The Sources window allows you to create, attach, define, and remove internal embedded and external linked style sheets.





## @Media

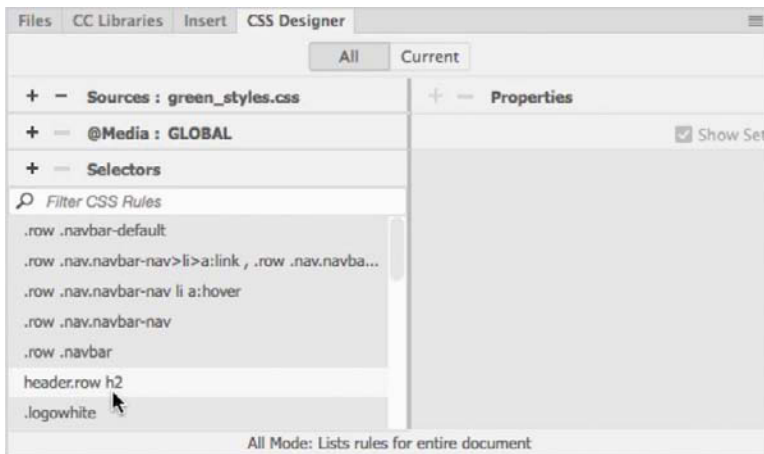
The @Media window is used to define media queries to support various types of media and devices.








## Selectors

The Selectors window is used to create and edit the CSS rules that format the components and content of your page. Once a selector, or rule, is created, you define the formatting you wish to apply in the Properties window.

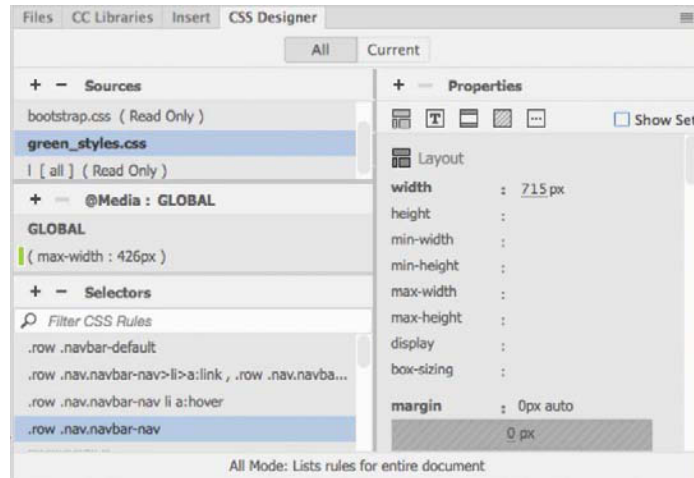
In addition to allowing you to create and edit CSS styling, the CSS Designer can also be used to identify styles already defined and applied, and to troubleshoot issues or conflicts with these styles.



## Properties

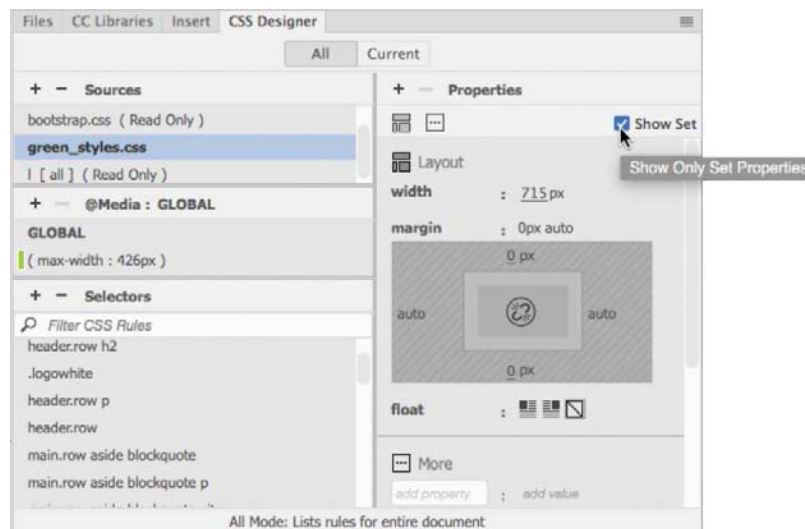
The Properties window features two basic modes. By default, the Properties window displays all available CSS properties in a list, organized in five categories: Layout , Text , Borders , Background , and More . You can scroll down the list and apply styling as desired or click the icon to jump to that category of the Properties panel.

● **Note:** Deselect the Show Set option to see all the CSS Designer categories.

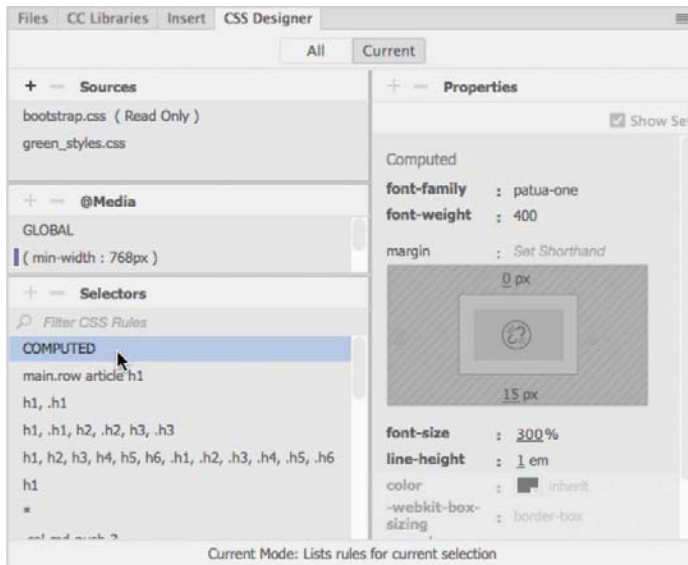


The second mode can be accessed by selecting Show Set at the upper-right edge of the window. In this mode, the Properties panel will then filter the list down to only the properties actually applied to the rule chosen in the Selectors window. In either mode, you can add, edit, or remove style sheets, media queries, rules, and properties.

Selecting the Show Set option limits the property display to only the properties that are styled.



The Properties panel also features a COMPUTED option that displays the aggregated list of styles applied to the selected element when the Current button in CSS Designer is selected. The COMPUTED option will then appear anytime you select an element or component on the page. When you're creating any type of styling, the code created by Dreamweaver complies with industry standards and best practices.



The COMPUTED option collects in one place all styles applied to the selection.

## All and Current modes

The CSS Designer has two buttons at the top of the panel, All and Current, that enable specific functions and workflows within the panel.

When the All button is selected, the panel allows you to create and edit CSS style sheets, media queries, rules, and properties. When the Current button is selected, the CSS troubleshooting functions are enabled, allowing you to inspect individual elements in a webpage and assess existing styling properties applied to a selected element. In this mode, however, you will notice that some of the normal features in the CSS Designer are disabled. For example, when in Current mode you are able to edit existing properties and add new style sheets, media queries, and rules that apply to the selected element, but you cannot delete existing style sheets, media queries, or rules. This interaction works the same way in all document views modes.




When the Current button is selected, the CSS Designer displays all styling associated with a selected element.

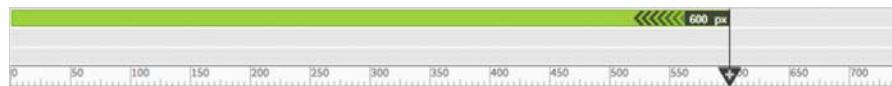
In addition to using the CSS Designer, you may also create and edit CSS styling manually within Code view while taking advantage of many productivity enhancements, such as code hinting and auto-completion.

## Using the Visual Media Query (VMQ) interface

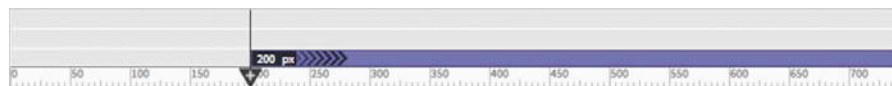
The Visual Media Query (VMQ) interface is another newer feature of Dreamweaver. Appearing above the document window, the VMQ interface allows you to visually inspect and interact with existing media queries, as well as create new ones on the fly using a simple point-and-click interface.

Open any webpage that is formatted by a style sheet with one or more media queries. If necessary, enable the VMQ interface by toggling the VMQ  icon. The VMQ interface will appear above the document window and display color-coded bars that specify the type of media query that has been defined. Media queries using only a max-width specification will be displayed in green. Media queries using only a min-width specification will be displayed in purple. Ones that use both will be displayed in blue.

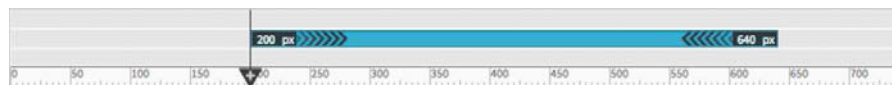
Max-width media query  
in the VMQ interface



Min-width media query  
in the VMQ interface

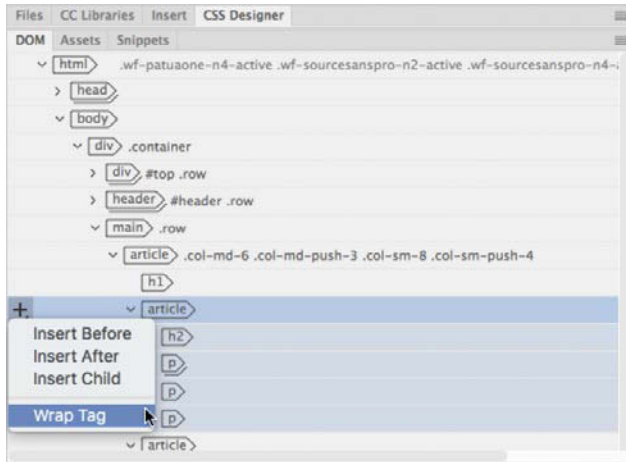


Media using both  
max-width and  
min-width  
specifications



# Using the DOM Viewer

The DOM Viewer allows you to view the Document Object Model (DOM) to quickly examine the structure of your webpage as well as interact with it to select, edit, and move existing elements and insert new ones. You'll find that it makes working in complex HTML structures simple.



## Using Element dialogs, displays, and inspectors

As Dreamweaver moves to make Live view the default workspace, it has driven the development of new methods for editing and managing HTML elements. You will find a handful of new dialogs, displays, and inspectors that provide instant access to important element properties and specifications. All of them, except the Text Display, allow you to add class or ID attributes to the selected element and even insert references to those attributes into your CSS style sheets and media queries.

### Position Assist dialog


The Position Assist dialog appears whenever new elements are being inserted in Live view, using either the Insert menu or Insert panel. Typically, the Position Assist dialog will offer the options Before, After, Wrap, and Nest. Depending on what type of element is selected and what item is targeted by the cursor, one or more of the options may be grayed out.



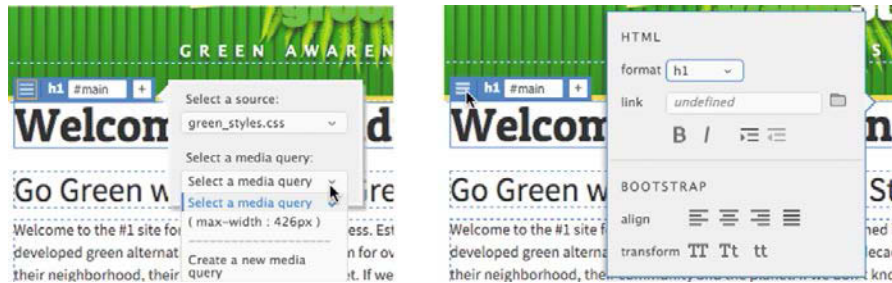
The Position Assist dialog allows you to control how elements and components are inserted in Live view.

## Element Display

The Element Display appears whenever you select an element in Live view. When an element is selected in Live view, you can change the selection focus by pressing the up and down arrow keys; the Element Display will then highlight each element in the page, in turn, based on its position in the HTML structure.

The Element Display features a Quick Property Inspector  where you can instantly access properties such as formats, links, and alignment. The Element Display also allows you to add a class or ID to the selected element or to edit a class or ID.

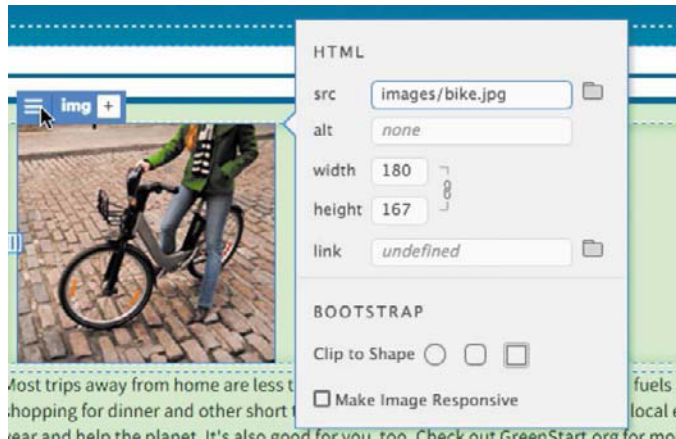
The Element Display enables you to quickly apply classes, IDs, and links, as well as perform basic formatting.



## Image Display

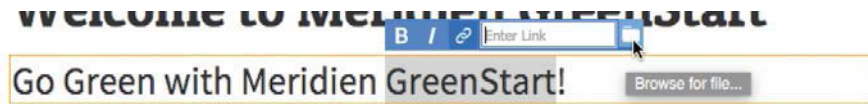
The Image Display provides a Quick Property inspector from which you can access the image source, alt text, and width and height attributes; it also contains a field from which you can add a hyperlink.

The Image Display gives you quick access to the image source and allows you to add hyperlinks.



## Text Display

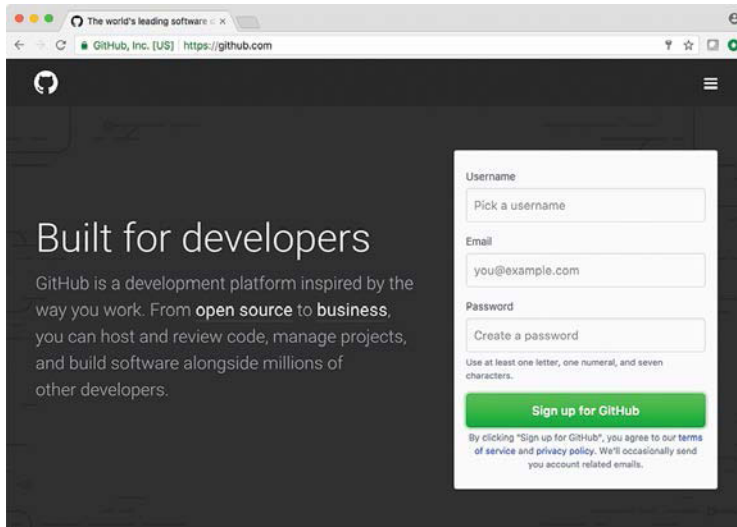
The Text Display appears whenever you select a portion of text in Live view. The Text Display allows you to apply bold `<strong>`, italic `<em>`, and hyperlink `<a>` markup to the selected text. Double-click the text to open the orange editing box. When you select some text, the Text Display will appear. When you are finished editing the text, click just outside the orange box to complete the changes. Press Esc to cancel the changes and return the text to its previous state.



The Text Display lets you apply bold, italics, and hyperlink markup to selected text.

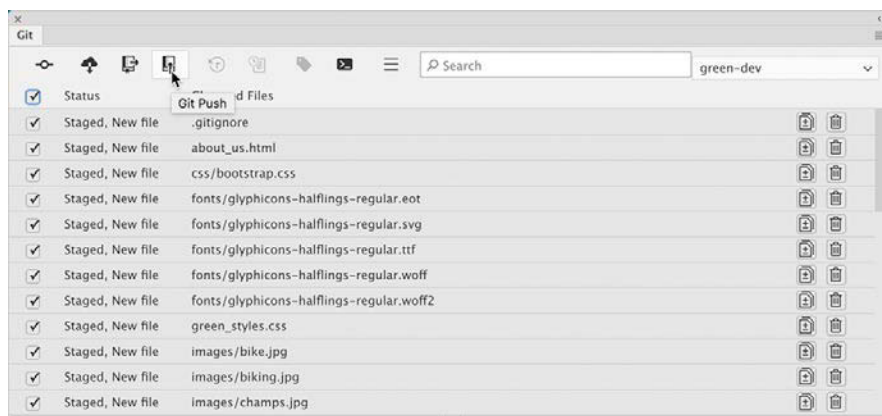
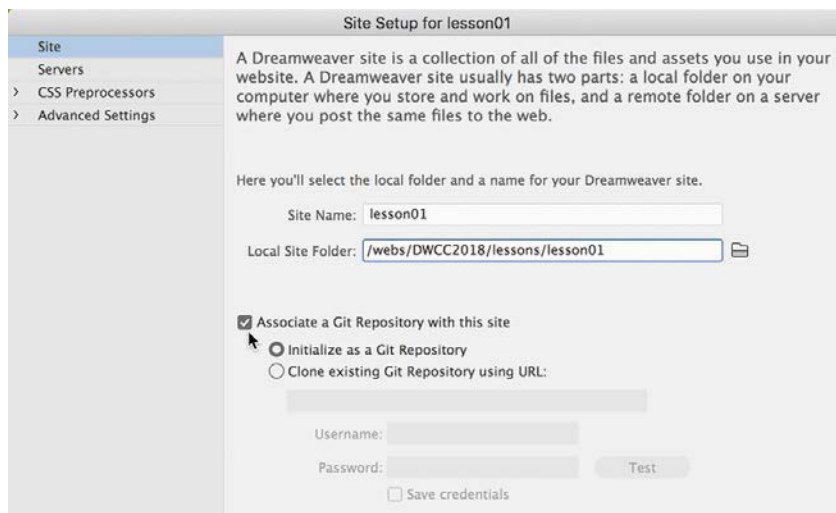
## Setting up version control in Dreamweaver

New to Dreamweaver CC (2018 release) is support for Git, a popular open source version control system for managing the source code of your websites. Such systems are very valuable for preventing conflicts and loss of work when you have a number of people working together on a project.



You set up a Git repository within your site definition dialog. After that, you can connect your site to your remote repository and push and pull changes as needed.





Go to <https://helpx.adobe.com/dreamweaver/using/git-support.html> for full instructions on how to set up Git version control for your own project.

## Exploring, experimenting, and learning

The Dreamweaver interface has been carefully crafted over many years to make the job of webpage design and development fast and easy. It's a design in progress. It's always changing and evolving. If you think you already know the program, you're wrong. Install the latest version and check it out. Feel free to explore and experiment with various menus, panels, and options to create the ideal workspace and keyboard shortcuts to produce the most productive environment for your own purposes. You'll find the program endlessly adaptable, with power to spare for any task. Enjoy.



## Review questions

- 1 Where can you access the command to display or hide any panel?
- 2 Where can you find the Code, Split, Design, and Live view buttons?
- 3 What can be saved in a workspace?
- 4 Do workspaces also load keyboard shortcuts?
- 5 What happens in the Property inspector when you insert the cursor into various elements on the webpage?
- 6 What features in the CSS Designer make it easy to build new rules from existing ones?
- 7 What can you do with the DOM Viewer?
- 8 Does the Element Display appear in Design or Code view?
- 9 What is Git?

## Review answers

- 1 All panels are listed in the Window menu.
- 2 The Code, Split, Design, and Live view buttons are components of the Document toolbar.
- 3 Workspaces can save the configuration of the document window, the open panels, and the panels' size and position on the screen.
- 4 No. Keyboard shortcuts are loaded and preserved independently of a workspace.
- 5 The Property inspector adapts to the selected element, displaying pertinent information and formatting commands.
- 6 The CSS Designer allows you to copy and paste styles from one rule to another.
- 7 The DOM Viewer allows you to visually examine the DOM and select and insert new elements and edit existing ones.
- 8 No. The Element Display is visible only in Live view.
- 9 Git is an open source version control system that enables you to manage your website source code.

# INDEX

## A

- <a> (anchor) element, 59
  - hyperlinks enabled by, 274
  - pseudo-classes, 303
- a:active pseudo-class, 303
- a:focus pseudo-class, 303
- a:hover pseudo-class, 303
- a:link pseudo-class, 303
- a:visited pseudo-class, 303
- absolute hyperlinks, 275, 286–288
- Accordion widgets. *See* jQuery Accordion widgets
- active state, 303
- Add Behavior icon, 310, 317, 319, 321
- Add Class/ID icon, 207, 251, 295, 297
- Add CSS Source icon, 175
- Add New Server icon, 347, 351
- Add Selector icon, 140, 154, 171, 330
- Adobe Add-ons, 15, 310, 311
- Adobe Authorized Training Centers, 15
- Adobe Creative Cloud, 5
- Adobe Dreamweaver. *See* Dreamweaver
- Adobe Edge Web Fonts, 218–219
- Adobe forums, 15
- Adobe Muse, 57
- Adobe Omniture, 99
- Adobe Photoshop. *See* Photoshop
- All mode, CSS Designer, 47, 86
- alpha transparency, 245, 247
- alt text, 250
- anchor element, 59, 274, 303
- animation, bonus chapter on, 8
- App Theme window, 25
- Applications folder, 265
- Apply Comment icon, 379
- <article> element, 62, 77, 193, 194
- <aside> element, 62, 154, 199
- Assets panel, 191, 201, 249, 266
- Attach Existing CSS File dialog, 175

- attributes
  - class, 90
  - id, 91, 294, 298–299
  - target, 289
- audience for website, 98
- <audio> tag, 62
- automatic uploads, 350
- automatically writing code, 373–377

## B

- background effects
  - adding in CSS code, 134–138
  - applying to jQuery Accordion, 331–332, 339–341
- backgrounds
  - color, 72, 332, 334
  - gradient, 124–128
- Beginning CSS Preprocessors: With SASS, Compass.js, and Less.js* (Prabhu), 393
- behaviors, 310–311, 313–322
  - accessing, 310
  - adding to hyperlinks, 320–322
  - applying, 316–319
  - functions of, 310–311
  - removing applied, 320
  - review questions/answers on, 342–343
  - Swap Image behavior, 316–318
  - Swap Image Restore behavior, 318–319
- Behaviors panel, 310, 316
- Berners-Lee, Tim, 56
- bit depth, 244
- \_blank target option, 288, 289
- block elements, 58
- <blockquote> element, 59, 154–157, 200
- <body> element, 59, 371
- body text defaults, 72
- bolded text in book, 2
- bonus material, 8

- Bootstrap
  - templates, 111
  - widgets, 341
- borders
  - indented text, 209
  - navigation menu, 301–302
  - table, 212, 221
- box model, 74–75
- `<br>` tag, 59, 192
- Brightness and Contrast tool, 270
- Browse command, 387
- Browse for File icon, 279, 307
- Browse for Folder icon, 12, 382, 383
- browsers. *See* web browsers

## C

- cache, 14, 351
- calculating specificity, 80
- `<canvas>` tag, 62
- `<caption>` element, 229, 230
- captions
  - image, 182–183
  - table, 229–231
- cascade theory, 76, 78
- cascading style sheets. *See* CSS
- CC Files option, 20
- cells
  - classes applied to, 224–226
  - column width for, 225
  - defaults for text in, 72
  - moving between table, 213
  - styling table, 221–223
- cgi-bin folders, 348
- character entities, 60–61
- Check Spelling dialog, 231–232
- check-in/check-out system, 350
- child pages, 164–172
  - adding content to, 166–172
  - creating new, 164–166
  - hyperlink updates in, 283–285
  - updating, 176–180, 283–285
- `<cite>` element, 155, 156, 200
- class attributes, 90
- classes
  - applied to cells, 224–226
  - creating custom, 207–208, 251

- jQuery Accordion, 329
- pseudo-classes and, 303
- Classroom in a Book series, 1
- clipboard, 193
- cloaking process, 354–356
- closing panels, 33
- code, 368–403
  - automatically writing, 373–377
  - background effects added in, 134–138
  - collapsing/expanding, 398
  - comments added to, 379–380
  - Common toolbar for, 378
  - compiling CSS, 386–389
  - creating HTML, 370–377
  - CSS preprocessors for, 380–393
  - Emmet toolkit for, 373–377
  - font in book indicating, 2
  - Linting support for, 393–394
  - manually writing, 370–373
  - multicursor support for, 377–378
  - previewing assets for, 400–401
  - review questions/answers on, 402–403
  - selection options for, 395–397
  - Split Code view option, 399
  - See also* CSS; HTML
- Code Hinting menu, 154
- Code Navigator, 81–84
- Code Theme setting, 25
- Code view, 26
  - CSS styling in, 48, 88
  - Find and Replace feature, 235–236
  - previewing assets in, 400–401
  - Refresh button, 327
  - selecting code in, 395–397
  - Split Code view option, 399
  - writing code in, 370–377
- code-hinting window, 372
- Coding toolbar, 38
- Collapse icon, 398
- collapsing/expanding code, 398
- color
  - background, 72, 332, 334
  - table header, 221–222
- color picker, 88
- color space, 244–245
- color themes, 9–10, 25

- columns, table, 215, 225–226
- comma-separated values (CSV) file, 226
- comments, 59, 379–380
- Commit icon, 258, 264, 268
- Common toolbar, 38, 336, 378
- Compare option, 365
- compiling CSS code, 386–389
- compression, image file, 246–247
- COMPUTED option, 47, 87–88
- Connect to Remote Server icon, 359
- Connect Using pop-up menu, 348
- content placeholders, 376
- converting image files, 256–257
- Copy All Styles option, 227
- Copy Dependent Files dialog, 326
- Copy Text option, 142
- copying/pasting
  - code to find/replace, 235–236
  - consistent view required for, 314
  - images from Photoshop, 262–265
  - styles, 227–228, 331
  - tables, 215–216
  - text, 167–168, 193
- copyright symbol, 158–159
- courses, Adobe, 15
- Create New button, 22
- Creative Cloud, 5
- Crop tool, 270
- cropping images, 268–269
- CSS (cascading style sheets), 66–95
  - background effects, 134–138
  - bonus lesson on, 68, 70
  - box model, 74–75
  - cascade theory, 76, 78
  - class attributes, 90
  - code compilation, 386–389
  - Code Navigator tool, 81–84
  - CSS Designer tool, 44–48, 85–88
  - current version, 91–93
  - descendant theory, 79
  - description of, 68
  - HTML comparison, 68–70
  - id attributes, 91
  - inheritance theory, 78
  - linked files with, 172–176
  - multiple element formatting, 89
  - new features and effects, 91–92
  - positioning images using, 250–252
  - preprocessors, 380–393
  - Property inspector, 41
  - pseudo-classes, 303
  - resources on, 93, 393
  - review questions/answers on, 94–95
  - rules and rule syntax, 75–76, 77, 339
  - selector nesting, 389–391
  - shorthand techniques, 89–90
  - specificity theory, 79–80
  - style sheet imports, 391–393
  - styling tables with, 216–221
  - troubleshooting, 121–123
  - See also* code
- CSS3, 91–93
  - features and effects, 91–92
  - overview and support, 92–93
- CSS3: The Missing Manual (3rd Edition)* (McFarland), 93
- CSS Designer, 44–48, 85–88
  - All and Current modes, 47–48, 86
  - @Media window, 45
  - Properties window, 46–47, 87
  - Selectors window, 45, 86, 87
  - Sources window, 44
- CSS preprocessors, 380–393
  - code compilation, 386–389
  - enabling, 380–383
  - resources on, 382, 393
  - selector nesting, 389–391
  - source file creation, 383–386
  - style sheet imports, 391–393
- CSS Secrets: Better Solutions to Everyday Web Design Problems* (Verou), 93
- CSS Source dialog, 251
- CSS Source icon, 175
- CSS Source pop-up window, 208
- Current mode, CSS Designer, 47–48, 86, 343
- custom classes, 207–208, 251
- Custom Font Stacks, 219
- Customize Toolbar dialog, 38, 336, 378
- Customize Toolbar icon, 29, 38, 336, 378

## D

- declarations, 75
- default images folder, 13
- default target option, 289
- degrading gracefully, 218
- Delete icon, 365
- deleting. *See* removing
- dependent files, 359, 360
- deprecated tags, 69
- descendant theory, 79
- description, page, 160–162
- Description dialog, 160–161
- Design view, 26–27, 150, 213, 259
- designing webpages. *See* web design
- destination links
  - adding to the same page, 306
  - creating in Element Display, 297–298
  - id attributes for, 298–299
- Developer workspace, 31, 370–371
- disabling
  - Live Source Code, 29
  - Start Screen, 22
- displays
  - Element Display, 50, 208, 288, 291–292, 297–298
  - Image Display, 50
  - Text Display, 51, 287, 293, 298
- dithering process, 244
- <div> element, 59, 109, 325
- docking panels, 35
- Document Object Model (DOM), 49
- Document toolbar, 37
- DOM Viewer, 49
- dpi (dots per inch), 243
- dragging panel tabs, 33
- dragging-and-dropping images, 266
- Dreamweaver
  - color themes, 9–10
  - graphic tools, 270
  - installing, 4–5
  - introduction screens, 9
  - prerequisites, 2
  - resources, 15
  - site setup, 11–14
  - updating, 5–6, 14

- version control, 51–52

- workspaces, 10–11

- drop zone, 34

- Duplicate Set icon, 38

- .dwt file extension, 151

- dynamic templates, 151

## E

- Edge Web Fonts, 218–219

- Edit HTML Attributes icon, 250, 291, 296

- Edit Image Settings tool, 270

- Edit image tool, 270

- editable regions

- formatting content in, 181–183

- inserting into templates, 151–158

- editing

- hyperlinks, 279

- images, 270

- tables, 223

- educator resources, 15

- effects

- background, 134–138

- rollover, 310

- Element Display, 50, 208, 288, 291–292, 297–298

- elements, 57, 58–61

- HTML character entities as, 60–61

- HTML tags as, 57, 58–60

- locking on screen, 299–301

- text conventions for, 3

- <em> tag, 59, 287

- em dash character, 167

- em measurements, 301

- Email Link dialog, 289–290

- email links, 277, 289–293

- creating, 289–291

- image-based, 291–292

- text-based, 292–293

- warning about, 293

- embedded formatting, 75

- Emmet toolkit, 373–377

- encryption options, 346

- entities, HTML, 158–159

- error checking, 393–394

- Expand icon, 398

- expanding code, 398

- explicit encryption, 346
- external hyperlinks, 274, 286–288
- Extract Asset icon, 130, 133
- Extract panel
  - accessing, 113–115
  - gradient background creation, 124–128
  - image asset extraction, 128–134
  - mockup text extraction, 119–121
  - styling elements using, 115–119
  - text styling extraction, 123–124
- Extract workflow, 36–37
- extracting
  - image assets from mockups, 128–134
  - styling of text from mockups, 123–124
  - text from mockups, 119–121
- eye icon (Photoshop), 261

## F

- `<figcaption>` tag, 62, 171, 182–183
- `<figure>` tag, 62, 171, 181
- File Activity icon, 361
- file formats
  - for raster images, 246–247
  - for vector graphics, 242
- File Transfer Protocol. *See* FTP sites
- files
  - cloaking, 354
  - opening, 188
  - uploading, 350
- Files panel, 281, 347, 355, 386
- Find and Replace feature, 233–238
- Firefox browser, 99
- flattening images, 262
- floating panels, 34
- focus state, 303
- folders
  - cloaking, 354
  - resource, 13
  - site root, 12
- fonts
  - HTML defaults for, 72
  - indicating code, 2
  - managing, 218–219
  - predefined stacks of, 218
  - typefaces vs., 217

- Typekit, 104
  - web or web-safe, 218–219
- `<footer>` element, 62, 158
- `<form>` tag, 59
- Format menu, 197
- forums, Adobe, 15
- freezing navigation menus, 299–301
- FTP (File Transfer Protocol), 346
- FTP over SSL/TLS connections, 346
- FTP Performance Optimization, 349, 350
- FTP sites
  - connection options, 349
  - steps for setting up, 347–351
  - troubleshooting connections to, 350

## G

- Get icon, 362, 365
- GIF file format, 133, 246
- Giraudel, Hugo, 393
- Git version control, 51–52
- Goldstein, Alexis, 93
- Google Analytics, 99
- Google Chrome, 99
- Google Maps, 276, 277, 286–288
- gradient backgrounds
  - creating using Extract panel, 124–128
  - web browser support for, 127
- Gradient color picker, 128, 305
- graphic tools, 270
- graphics
  - raster, 242–247
  - vector, 242
  - See also* images
- grouping panels, 34

## H

- `<h1>` to `<h6>` tags, 59, 196
- hash symbol (#), 122, 280, 296, 297, 377
- `<head>` tag, 59, 151, 159
- `<header>` element, 62, 126
- headers, table, 72
- headings
  - creating, 196–197
  - HTML defaults for, 72

- Help reference, 15
- hex colors, 138
- `<hgroup>` tag, 62
- high color, 245
- hinting menu, 208, 209, 372
- home page
  - hyperlinks to, 282–283
  - setting up, 356–358
- hover state, 303
- `<hr>` tag, 59
- HTML (HyperText Markup Language), 54–65
  - automatically writing, 373–377
  - bonus exercises on, 58
  - character entities, 60–61
  - code validation, 162–163
  - comments added to, 379–380
  - CSS comparison, 68–70
  - current version, 61–63
  - defaults, 70–72
  - description of, 56
  - elements, 57, 58–61
  - Emmet toolkit for, 373–377
  - entity insertion, 158–159
  - historical origins of, 56–57
  - manually writing, 370–373
  - Property inspector, 40
  - review questions/answers on, 64–65
  - structure of webpage using, 58
  - table formatting and, 211
  - tags, 57, 58–60
  - web browsers and, 73
  - See also* code
- HTML5, 61–63
  - lack of defaults for, 71–72
  - quote attribution in, 200
  - semantic web design, 62–63
  - tags, 61–62
- HTML5 & CSS3 for the Real World (2nd Edition)* (Goldstein, Lazaris, and Weyl), 93
- HTML Attribute dialog, 250
- HTML structures, 197–201
- `<html>` tag, 59
- Hyperlink icon, 287, 293
- hyperlinks, 274–307
  - absolute, 275, 286–288
  - adding behaviors to, 320–322
  - checking on pages, 305–306
  - defined, 274
  - destination, 297–299, 306
  - editing/removing, 279
  - email, 277, 289–293
  - external, 274, 286–288
  - home page, 282–283
  - image-based, 291–292
  - internal, 274, 278–285
  - placeholder for, 279, 320, 321
  - pseudo-classes for, 303
  - relative, 274, 275, 278–281
  - review questions/answers on, 307
  - targeted, 294–299
  - testing, 285
  - text-based, 292–293
  - updating in child pages, 283–285
- HyperText Markup Language. *See* HTML

## I

- icons
  - minimizing panels to, 32
  - See also specific icons*
- id attributes
  - creating, 91, 298, 372
  - targeted links and, 294, 298–299
- `<i frame>` tag, 59
- Ignore option, 365
- Image Display, 50
- Image Optimization dialog, 256, 263, 270
- image-based links, 291–292
- image-editing programs, 265
- images, 240–271
  - captions for, 182–183
  - color spaces used for, 244–245
  - converting files for, 256–257
  - copying/pasting from Photoshop, 262–265
  - cropping with Crop tool, 268–269
  - dragging-and-dropping, 266
  - extracting from mockups, 128–134
  - file formats for, 242, 246–247
  - inserting on a webpage, 248–250, 252–259
  - non-web file type, 256–259
  - optimizing with Property inspector, 267–269
  - Photoshop Smart Objects as, 260–262

- positioning with CSS classes, 250–252
- Property inspector controls for, 41
- Quality setting for, 256
- raster graphics as, 242–247
- resolution of, 243–244, 259
- review questions/answers on, 271
- size of, 244, 259, 268
- swapping/restoring, 316–319
- tools for editing, 270
- unique ids recommended for, 316
- vector graphics as, 242
- Images category icon, 249, 266
- Images window, 249
- `<img>` element, 59, 250
- implicit encryption, 346
- Import Tabular Data dialog, 226
- importing
  - CSS style sheets, 391–393
  - tabular data, 226–227
  - text, 191–194
- indented text, 205–210
- inheritance theory, 78
- inline elements, 58
- inline formatting, 75
- `<input>` tag, 59
- Insert menu, 254–255, 341
- Insert panel, 252–254, 324, 341
- Insert Rows or Columns dialog, 215
- Insert Section dialog, 227
- inserting
  - editable regions into templates, 151–158
  - images on a webpage, 248–250, 252–259
  - jQuery Accordion widgets, 324–326
  - metadata into templates, 159–162
  - rows or columns into tables, 215
  - tables from other sources, 226–229
- Inspect mode, 29–30, 337
- Inspect Mode icon, 337
- installing
  - Dreamweaver, 4–5
  - testing servers, 352
- Instant LESS CSS Preprocessor How-to* (Libby), 393
- interactivity, 308–343
  - Dreamweaver behaviors for, 310–311, 313–322
  - jQuery Accordion widgets for, 323–341
  - review questions/answers on, 342–343
- interface components, 16–53
  - CSS Designer, 44–48
  - DOM Viewer, 49
  - Element Display, 50
  - Extract workflow, 36–37
  - Image Display, 50
  - keyboard shortcuts, 38–40
  - New Feature guides, 23
  - overview of, 18–19
  - panels, 31–35
  - personalizing, 35–36
  - Position Assist dialog, 49
  - preferences for, 23–26
  - Property inspector, 40–41
  - Related Files interface, 41–42
  - review questions/answers on, 53
  - Start Screen, 19–22
  - tag selectors, 43
  - Text Display, 51
  - toolbars, 37–38
  - views, 26–30
  - VMQ interface, 48
  - workspaces, 30–31
- internal hyperlinks, 274, 278–285
  - home link creation, 282–283
  - relative link creation, 278–281
  - targeted link creation, 294–297
  - updating in child pages, 283–285
- Internet, pre-HTML, 57
- Internet Explorer/Edge browser, 99
- Internet service provider (ISP), 348
- introduction screens, 9
- IPv6-based servers, 349

## J

- JavaScript, 327
- JPEG file format, 133, 246–247
- jQuery Accordion widgets, 323–341
  - background effects for, 331–332, 339–341
  - conditional states for, 332–335
  - identifying dynamic styling in, 335–339
  - inserting into layouts, 324–326
  - overview of working with, 323
  - styling, 327–341
- Jump Start Sass: Get Up to Speed with Sass in a Weekend* (Giraudel and Suzanne), 393



## K

keyboard shortcuts, 38–40

## L

layouts

- predefined, 110–112
- template creation from, 150–151
- workspace, 30–31
- See also* page layouts

Lazaris, Louis, 93

Learn tab, 22

LESS CSS preprocessor, 380, 382

lesson files

- downloading and accessing, 6–7
- recommended order for using, 8

Levels dialog (Photoshop), 265

`<li>` element, 59, 204

Libby, Alex, 393

line numbers, 395

`<link>` element, 59

Link Checker panel, 306

link state, 303

linked CSS formatting, 75

links. *See* hyperlinks

Linting support, 393–394

lists, 201–210

- creating, 201–205
- indented text in, 205–210
- ordered and unordered, 204–205

Live Code mode, 336–339

Live Source Code mode, 29

Live view, 27

- entering editing mode in, 193
- Live Code feature in, 336–339
- previewing pages in, 189, 286
- selecting text in, 287

Live View Options pop-out menu, 339

local sites, 11, 346

- process of setting up, 11–14
- synchronizing with remote sites, 363–365

Local Web Fonts, 219

local web servers, 351–354

locked elements, 299–301

Locked icon, 166

*Lorem* generator, 376

lossy compression, 247

## M

macOS vs. Windows instructions, 3–4

Maintain Synchronization Information  
option, 350, 351

Manage Fonts dialog, 218–220

Manage Sites dialog, 347, 351, 380

manually writing code, 370–373

map links, 287

Marcotte, Ethan, 100

margins, 72, 182

max-width specification, 48

McFarland, David Sawyer, 93

media queries

- CSS Designer window for, 45
- VMQ interface and, 48

@Media window, CSS Designer, 45

menus. *See* navigation menus

merged images, 262

`<meta>` tag, 59, 161, 162

metadata

- image-related, 250
- inserting into templates, 159–162

minification, 77

minimizing panels, 32

min-width specification, 48

mockups

- creating wireframes and, 103–104
- image assets extracted from, 128–134
- text extracted from, 119–121
- text styling extracted from, 123–124

monochrome, 244

multicursor support, 377–378

Muse, Adobe, 57

## N

named anchors, 294, 297

named entities, 158

`<nav>` element, 62, 117, 301

navigation, 272–307

- basics of, 274–275
- checking on pages, 305–306
- email links for, 289–293
- external hyperlinks for, 286–288
- image-based links for, 291–292
- internal hyperlinks for, 278–285

- locking menus for, 299–301
- review questions/answers on, 307
- styling menus for, 301–305
- targeting page elements, 294–299
- text-based links for, 292–293
- See also* hyperlinks
- navigation menus, 299–305
  - locking, 299–301
  - styling, 301–305
- nesting CSS selectors, 389–391
- network servers, 351–354
- New Document dialog, 111, 164, 173, 371, 383–384
- New Editable Region dialog, 153, 157
- New Feature guides, 23
- new target option, 289
- “no” symbol, 279

## O

- <ol> element, 60, 204
- Omniure, Adobe, 99
- online materials, 6–7
- onMouseOut attribute, 319
- onMouseOver attribute, 317–318
- Open button, 22
- Open in Browser option, 285
- optimizing images, 267–269
- Ordered List icon, 204
- ordered lists, 204
- Output panel, 394

## P

- <p> element, 60, 77, 154, 156, 193
- padding, 72
- page description, 160–162
- page design
  - desktop vs. mobile, 102–103
  - evaluating options for, 108–110
  - list of components for, 102
- page layouts, 106–147
  - CSS background effects for, 134–138
  - evaluating design options for, 108–110
  - Extract panel for styling, 115–119
  - extracting text from mockups for, 119–121

- finishing touches provided for, 138–145
- gradient backgrounds created for, 124–128
- image assets extracted for, 128–134
- predefined in Dreamweaver, 110–112
- review questions/answers on, 146–147
- styling existing, 113–115
- template creation from, 150–151
- text styling extracted for, 123–124
- palettes, color, 244–245
- panels, 31–35
  - closing, 33
  - docking, 35
  - dragging, 33
  - floating, 34
  - grouping, 34
  - minimizing, 32
  - stacking, 35
- See also specific panels*
- parent tag selector, 397
- \_parent target option, 289
- Passive FTP connections, 349
- passwords, FTP site, 348
- Paste command, 168
- Paste Special command, 168
- Paste Styles option, 228, 331
- path element notation, 280
- pathname issues, 176
- Photoshop
  - bonus lesson on using, 104
  - copying/pasting images from, 262–265
  - Smart Objects from, 260–262
- Photoshop mockups. *See* mockups
- <picture> element, 62, 259
- pixels, 242–243
- placeholders
  - content, 376
  - hyperlink, 279, 320, 321
  - text, 202
  - webpage, 361
- PNG file format, 133, 247
- Point to File icon, 281, 307
- pointer cursor, 278
- Position Assist dialog, 49, 211, 212, 324
- position property, 300
- positioning images, 250–252
- ppi (pixels per inch), 243

- Prabhu, Anirudh, 393
- predefined layouts, 110–112
- Preferences dialog, 9, 23, 25–26
- prelaunch checklist, 358
- Preload Images option, 317
- previewing
  - assets in Code view, 400–401
  - pages in Live view, 189
  - pages in web browsers, 284–285
- Program Files folder, 265
- Properties window, 46–47
- Property inspector, 40–41
  - CSS button, 41
  - displaying, 40, 160, 214
  - docking, 191, 214
  - graphic tools in, 270
  - HTML button, 40
  - image properties, 41
  - optimizing images with, 267–269
  - Refresh button, 327
  - table properties, 41
- proxy host connections, 349
- PSD files, 260
- pseudo-classes, 303
- publishing to the web, 344–367
  - cloaking process for, 354–356
  - home page setup for, 356–358
  - prelaunch checklist for, 358
  - putting your site online, 359–362
  - remote site setup for, 346–354
  - review questions/answers on, 366–367
  - synchronization process for, 363–365
  - testing servers for, 351–354
- punctuation, code, 3
- purpose of website, 98
- Put icon, 360, 362, 365

## Q

- Quality setting, 256
- queries, media, 45, 48
- Quick Property Inspector icon, 50
- Quick Start option, 21
- Quick Tag Editor, 140, 154, 195, 199
- quotations, 153–158, 197–201

## R

- raster graphics, 242–247
  - color spaces for, 244–245
  - file formats for, 246–247
  - resolution of, 243–244
  - scaling issues, 264
  - size of, 244
- RDS (Remote Development Services), 346
- Recent option, 20
- Refresh button, 327, 394
- Refresh Site List icon, 249
- refreshing browsers, 265
- regular expressions, 233
- Related Files interface, 41–42, 388, 403
- relative hyperlinks, 274, 275, 278–281
- remote servers, 347, 359
- remote sites, 11, 346–354
  - connection methods, 346
  - definition of, 346, 367
  - setting up for FTP, 347–351
  - synchronizing local and, 363–365
  - testing servers for, 351–354
  - troubleshooting connections to, 350
  - uploading files to, 359–362
- Remove Comment icon, 380
- Remove Event icon, 320
- removing
  - applied behaviors, 320
  - comments, 380
  - hyperlinks, 279
  - placeholder text, 202
- reordering panel tabs, 33
- Resample tool, 270
- Reset icon, 258
- Resig, John, 327
- resolution, 243–244
- resource folders, 13
- resources
  - on Adobe Dreamweaver, 15
  - on CSS, 93
  - on CSS preprocessors, 382, 393
- responsive web design, 100
  - images and, 259
  - starter layouts for, 111, 147
- rollover effects, 310
- rows, table, 213–215
- rules, CSS, 75–76, 77, 339

## S

- sandwich icon, 223
- Sass CSS preprocessor, 380, 382, 384
- Save All command, 39, 180
- Save As dialog, 165
- Save As Template dialog, 150
- Save Log button, 361
- Save Web Image dialog, 257, 263
- saving
  - custom workspaces, 36
  - pages as templates, 150
  - remote server setup, 351
- scaling raster images, 264
- `<script>` tag, 60
- SCSS preprocessor, 380, 384
- `<section>` element, 62, 152, 194, 203, 227
- Select Image Source dialog, 253, 254, 317
- Select Parent Tag icon, 397
- selecting code, 395–397
  - line numbers for, 395
  - parent tags for, 397
  - tag selectors for, 395–397
- selectors
  - CSS, 75, 77, 80, 389–391
  - tag, 43, 395–397
- Selectors window, 45, 86, 87, 179
- `_self` target option, 289
- semantic content
  - building, 153–158
  - creating for text, 194–196
- semantic web design, 62–63
- SFTP (Secure FTP), 346
- Sharpen tool, 270
- shortcuts, keyboard, 38–40
- shorthand, CSS, 89–90
- Show Log option, 284
- Show Set option, 46, 87, 209, 220
- sidebars, 153–158
- Site Definition dialog, 130, 381
- Site menu, 11
- Site Root button, 263
- site root folder, 12
- Site Setup dialog, 11, 347, 351, 354
- Smart Objects, 260–262, 271
- Solarized Light theme, 25, 371
- `<source>` tag, 62
- Sources window, 44
- `<span>` tag, 60, 140
- special characters, 158
- specificity theory, 79–80
- spell-checking webpages, 231
- Split Code view, 399
- Split view, 28
- stacking panels, 35
- stacks, font, 218
- staging servers, 346, 351
- Standard toolbar, 37
- Standard workspace, 10–11, 30
- Start Screen, 19–22
  - CC Files option, 20
  - Create New and Open buttons, 22
  - disabling, 22
  - Learn tab, 22
  - Quick Start option, 21
  - Recent option, 20
  - Starter Templates option, 21
- starter templates, 21, 111
- statistics on web usage, 99
- strikethrough formatting, 3
- `<strong>` tag, 60, 287
- structural elements, 58
- `<style>` tag, 60, 172–173, 179
- Style Rendering command, 75
- Stylin' with CSS: A Designers Guide (3rd Edition)*  
(Wyke-Smith), 93
- styling
  - copying/pasting, 227–228, 331
  - existing page layouts, 113–115
  - Extract panel used for, 115–119
  - extracting from text mockups, 123–124
  - indented text, 207–210
  - jQuery Accordions, 327–341
  - moving to a linked file, 172–176
  - tables and cells, 216–223
- Suzanne, Miriam, 393
- SVG graphics, 242
- Swap icon, 132
- Swap Image behavior, 316–318
- Swap Image Restore behavior, 318–319
- Sync Settings dialog, 9
- synchronization information, 350
- synchronization process, 363–365

- Synchronize dialog, 365
- Synchronize icon, 364, 365
- Synchronize pop-up menu, 364
- Synchronize With Remote Server dialog, 364
- syntax, CSS rule, 77

## T

- tabbed panels, 323

- Table dialog, 211, 212

- tables, 210–231

- borders for, 212, 221
  - caption elements in, 229–231
  - cell styling for, 221–223
  - column width in, 225–226
  - controlling the display of, 223–226
  - copying and pasting, 215–216
  - creating from scratch, 210–215
  - editing mode for, 223
  - HTML defaults for, 72
  - inserting from other sources, 226–229
  - moving between cells in, 213
  - Property inspector for, 41
  - review questions/answers on, 239
  - styling with CSS, 216–221
  - text styling for, 216–220

- `<table>` tag, 60, 214, 229

- tag selectors, 43, 395–397

- tags

- HTML, 57, 58–60

- HTML5, 61–62

- target attributes, 289

- Target menu, 288, 289

- targeted links, 294–299

- creating internal, 294–297
  - Element Display for creating, 297–298
  - id attributes for, 294, 298–299

- `<td>` tag, 60, 221, 222

- templates, 148–185

- adding content to, 166–172
  - child pages produced from, 164–172
  - cloaking the folder of, 354, 355–356
  - creating from existing layouts, 150–151
  - editable regions in, 151–158
  - formatting content in, 181–183
  - how they work, 150

- HTML entities in, 158–159

- linked style sheets for, 172–176

- metadata added to, 159–162

- review questions/answers on, 184–185

- semantic content in, 153–158

- starter, 21, 111

- updating, 176–180

- validating code in, 162–163

- views for using, 201

- Templates category icon, 191

- testing

- FTP connections, 349

- hyperlinks, 285

- site functionality, 353

- testing server, 351–354

- text, 191–201

- conventions used in book, 2–3

- copying and pasting, 167–168, 193

- extracting from mockups, 119–121

- finding and replacing, 233–238

- headings created for, 196–197

- HTML structures added to, 197–201

- importing from documents, 191–194

- indented, 205–210

- lists created from, 201–210

- removing placeholder, 202

- selecting in Live view, 287

- semantic structures for, 194–196

- spell-checking, 231–233

- styling extracted from, 123–124

- table styling of, 216–220

- typefaces vs. fonts for, 217

- web fonts for, 218–220

- Text Display, 51, 287, 293, 298

- `<textarea>` element, 60

- text-based links, 292–293

- `<th>` tag, 60, 221, 222

- themes, color, 9–10, 25

- thumbnails, 101–102

- TinyURLs, 1

- title, page, 160

- `<title>` tag, 60, 151, 161

- Toggle Size Constrain icon, 258, 268

- toolbars, 37–38

- Common toolbar, 38

- Document toolbar, 37

- Standard toolbar, 37

- \_top target option, 289
- <tr> tag, 60, 236
- training centers, 15
- troubleshooting
  - CSS styling, 121–123
  - FTP connections, 350
- true color, 245
- tutorials, 15
- type. *See* text
- typefaces vs. fonts, 217
  - See also* fonts
- Typekit fonts, 104

## U

- <u> tag, 60, 205
- Undo command, 270, 374
- Unordered List icon, 205
- unordered lists, 205
- Update from Original menu option, 261
- Update from Original tool, 270
- Update Pages dialog, 178, 284
- Update Template Files dialog, 178, 283
- updating
  - child pages, 176–180, 283–285
  - Dreamweaver, 5–6, 14
  - hyperlinks, 283–285
  - images, 261
  - templates, 176–180
- uploading files, 350, 359–362
- usernames, FTP site, 348

## V

- validating HTML code, 162–163
- variables, 384–385
- vector graphics, 242
- Verou, Lea, 93
- version control, 51–52
- video, bonus chapter on, 8
- <video> tag, 62
- views, 26–30
  - Code view, 26
  - Design view, 26–27
  - Inspect mode, 29–30
  - Live Source Code mode, 29

- Live view, 27
- Split view, 28, 399
- visited state, 303
- Visual Media Query (VMQ) interface, 48

## W

- W3C Validator Notification dialog, 163
- W3Schools website, 99
- Web 2.0 functionality, 310
- web animation/video bonus chapter, 8
- web browsers
  - hyperlink info in, 276
  - popularity of specific, 73, 99
  - previewing pages in, 284–285
  - refreshing, 265
- web design, 96–105
  - desktop vs. mobile, 102–103
  - important questions for, 98
  - mockups for, 103–104
  - page design and, 102–103
  - responsive, 100
  - review questions/answers on, 105
  - scenario illustrating, 101
  - statistics relevant to, 99
  - thumbnails for, 101–102
  - wireframes for, 103–104
- Web Edition of book, 6, 7
- web fonts, 218–219
- web resources
  - on Adobe Dreamweaver, 15
  - on CSS preprocessors, 382
- WebDav system, 346
- webpages
  - placeholders for, 361
  - spell-checking, 231–233
- web-safe colors, 245
- web-safe fonts, 219
- websites
  - questions for developing, 98
  - testing servers for, 351–354
  - uploading files to, 359–362
- weight of rules, 79, 80
- Weyl, Estelle, 93
- widgets. *See* jQuery Accordion widgets

- Windows vs. macOS instructions, 3–4
- wireframes, 103–104
- workspaces
  - Developer workspace, 31
  - prebuilt, 30–31
  - saving custom, 36
  - setting up, 10–11
  - Standard workspace, 10–11, 30
  - See also* interface components
- writing code
  - automatically, 373–377
  - manually, 370–373
- Wyke-Smith, Charles, 93
- WYSIWYG view, 18

## X

- X icon, 394

## Y

- Your Sites window, 381

## Z

- ZIP archives, 7