

Colored Pencil  
Cutout  
Film Grain  
Neon Glow  
Plastic Wrap  
Rough Pastels  
Smudge Stick  
Watercolor  
Crosshatch  
Ink Outlines

Spatter  
Diffuse Glow  
Glass  
Ocean Ripple  
Photocopy

# Best Photoshop Filters

The visual guide to more  
than 1,000 filter effects and  
how to use them

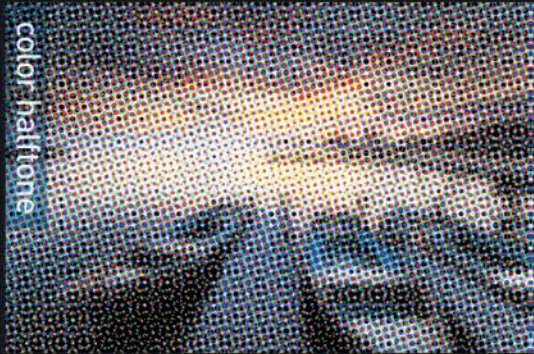
**SUSANNAH HALL**

Texturizer  
Stained Glass

cutout



color halftone



underpainting



charcoal



stained glass



# BEST PHOTOSHOP FILTERS





# BEST PHOTOSHOP FILTERS

 **Peachpit Press**

**Susannah Hall**





## BEST PHOTOSHOP FILTERS

Peachpit Press  
1249 Eighth Street  
Berkeley, CA 94710  
510/524-2178  
510/524-2221 (fax)

Find us on the Web at: [www.peachpit.com](http://www.peachpit.com)  
To report errors, please send a note to [errata@peachpit.com](mailto:errata@peachpit.com)

Peachpit Press is a division of Pearson Education  
Acquisitions Editor: Nikki Echler McDonald  
Production Editors: Cory Borman, Hilal Sala  
Proofreader: Jan Seymour

Copyright © 2012 Quarto Inc.

A QUARTO BOOK  
Conceived, designed, and produced by  
Quarto Publishing plc., The Old Brewery,  
6 Blundell Street, London N7 9BH

Senior Editor: Katie Crous  
Technical Editor: Steve Luck  
Art Director: Caroline Guest  
Assistant Art Editor: Kate Ormes  
Assistant Designer: Alison van Kerkhoff  
Picture Researcher: Sarah Bell  
Proofreader: Karolin Thomas  
Indexer: Diana LeCore  
Quarto Creative Director: Moira Clinch  
Quarto Publisher: Paul Carslake

### Notice of Rights

All rights reserved. No part of this book may be reproduced or transmitted in any form by any means, electronic, mechanical, photocopying, recording, or otherwise, without the prior written permission of the publisher. For information on getting permission for reprints and excerpts, contact [permissions@peachpit.com](mailto:permissions@peachpit.com).

### Notice of Liability

The information in this book is distributed on an "As Is" basis without warranty. While every precaution has been taken in the preparation of the book, neither the author nor Peachpit shall have any liability to any person or entity with respect to any loss or damage caused or alleged to be caused directly or indirectly by the instructions contained in this book or by the computer software and hardware products described in it.

### Trademarks

Many of the designations used by manufacturers and sellers to distinguish their products are claimed as trademarks. Where those designations appear in this book, and Peachpit was aware of a trademark claim, the designations appear as requested by the owner of the trademark. All other product names and services identified throughout this book are used in editorial fashion only and for the benefit of such companies with no intention of infringement of the trademark. No such use, or the use of any trade name, is intended to convey endorsement or other affiliation with this book.

ISBN 13 978-0-321-75422-6  
ISBN 10 0-321-75422-0

10 9 8 7 6 5 4 3 2 1

Color separation by Modern Age  
Printed in China by 1010 Printing International Ltd.

# Contents

<b>Introduction</b>	<b>8</b>
<b>APPLYING FILTERS</b>	<b>12</b>
What Are Filters?	12
How to Apply Filters	14
How to Use Smart Filters	16
Using the Filter Gallery	18
Fading a Filter Effect	20
Using Duplicate Layers	21
Using the History Brush	22
Adding New Filters	24
Finding New Filters	25
<b>FILTER DIRECTORY</b>	<b>26</b>
<b>Filter Gallery</b>	<b>28</b>
<b>Artistic Filters</b>	<b>30</b>
Colored Pencil	32
Cutout	36
Dry Brush	40
Film Grain	44
Fresco	48
Neon Glow	52
Paint Daubs	56
Palette Knife	64
Plastic Wrap	68
Poster Edges	72
Rough Pastels	76
Smudge Stick	94
Sponge	98
Underpainting	102
Watercolor	120
<b>Brush Strokes Filters</b>	<b>124</b>
Accented Edges	126
Angled Strokes	130
Crosshatch	134

Dark Strokes	138
Ink Outlines	142
Spatter	146
Sprayed Strokes	150
Sumi-e	154

<b>Distort Filters</b>	158
Diffuse Glow	160
Glass	164
Ocean Ripple	168

<b>Sketch Filters</b>	172
Bas Relief	174
Chalk & Charcoal	178
Charcoal	182
Chrome	186
Conté Crayon	190
Graphic Pen	208
Halftone Pattern	212
Note Paper	216
Photocopy	220
Plaster	224
Reticulation	228
Stamp	232
Torn Edges	236
Water Paper	240

<b>Stylize Filters</b>	244
Glowing Edges	246

<b>Texture Filters</b>	250
Craquelure	252
Grain	256
Mosaic Tiles	262
Patchwork	266
Stained Glass	270
Texturizer	274



<b>Combining Filters</b>	<b>284</b>	<b>Vanishing Point</b>	<b>338</b>
<b>The Scope of Filters</b>	<b>292</b>	<b>Blur Filters</b>	
Colored Pencil	294	Average Blur	342
Cutout	295	Blur	342
Dry Brush	296	Blur More	343
Film Grain	297	Box Blur	343
Fresco	298	Gaussian Blur	344
Paint Daubs	299	Lens Blur	345
Palette Knife and Poster Edges	300	Motion Blur	346
Neon Glow and Plastic Wrap	301	Radial Blur	347
Rough Pastels	302	Shape Blur	348
Smudge Stick	303	Smart Blur	348
Sponge and Underpainting	304	Surface Blur	349
Watercolor	305	<b>Distort Filters</b>	
Accented Edges and Crosshatch	306	Displace	350
Dark Strokes	307	Pinch	352
Ink Outlines	308	Polar Coordinates	354
Sumi-e	309	Ripple	356
Sprayed Strokes and Diffuse Glow	310	Shear	358
Ocean Ripple and Bas Relief	311	Spherize	360
Chalk & Charcoal	312	Twirl	362
Chrome	313	Wave	364
Conté Crayon	314	ZigZag	366
Note Paper	315	<b>Noise Filters</b>	
Photocopy and Reticulation	316	Add Noise	368
Torn Edges and Glowing Edges	317	Despeckle	369
Halftone Pattern	318	Dust & Scratches	369
Graphic Pen and Water Paper	319	Median	370
Stamp and Craquelure	320	Reduce Noise	371
Charcoal and Grain	321	<b>Pixelate Filters</b>	
Mosaic Tiles	322	Color Halftone	372
Patchwork	323	Crystallize	374
Stained Glass	324	Facet	376
Texturizer	325	Fragment	377
<b>Other Filter Effects</b>	<b>326</b>	Mezzotint	378
<b>Lens Correction</b>	<b>328</b>		
<b>Liquify</b>	<b>334</b>		

Mosaic	380
Pointillize	382

### Render Filters

Clouds	384
Difference Clouds	385
Fibers and Lens Flare	386

### Sharpen Filters

Sharpen	388
Sharpen Edges	388
Sharpen More	389
Smart Sharpen	389
Smart Sharpen: Advanced	390
Unsharp Mask	391

### Stylize Filters

Diffuse	392
Emboss	394
Extrude	396
Find Edges	398
Solarize	399
Tiles	400
Trace Contour	402
Wind	404

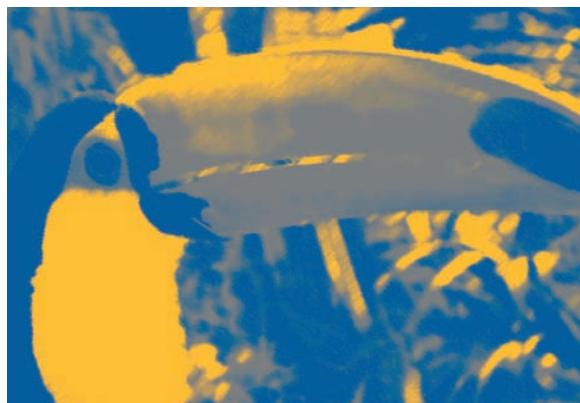
### Video Filters

De-Interlace	406
NTSC Colors	406

### Other Filters

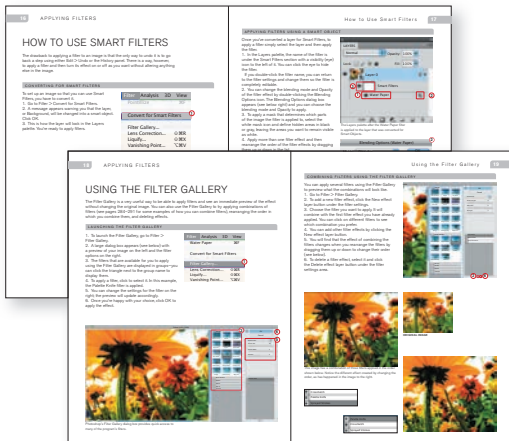
Custom	407
High Pass	407
Maximum and Minimum	408
Digimarc	409
Offset	410

Index	412
Credits	415





# INTRODUCTION



Welcome to *Best Photoshop Filters*. Whether you've used Photoshop filters before or never played around with them, this book should provide you with lots of ideas and an in-depth look into the different effects you can achieve.

You might use this book as a reference to flick through, to see which effects catch your eye, or you might choose to peruse the pages more systematically, to better understand the impact of each of the filters and its settings.

Filters offer you the opportunity to retouch and "correct" photos, as well as the facility to change

## FILTER GALLERY

The filters in this section feature in the Photoshop Filter Gallery, which is toward the top of the Filter menu. For each filter in the Filter Gallery (pages 28–283) you'll find an introduction that summarizes the main uses of the filter and the options available. For information about filters not available in the Filter Gallery, see pages 10–11.

The original image (before the filter is applied) is shown for ease of comparison.

The original image is shown with the default filter settings applied.



Both the default settings and the filter setting parameters are shown at the top of the page, for reference.

Further possibilities are explored with different images and settings, giving you an idea of the range of effects the featured filter can produce.

A short description of the filter's effect with the chosen settings applied is provided for each image or pair of images.

The same image is shown with different settings applied, which produce a more pleasing or different result than the default settings.

The settings used are shown near the relevant image.

your photo so that it resembles a painting or line drawing. There are everyday filters like Unsharp Mask or Smart Sharpen—which are used on most reproduced digital photographs—and filters, such as Neon Glow, that you might use only rarely for more extreme effects.

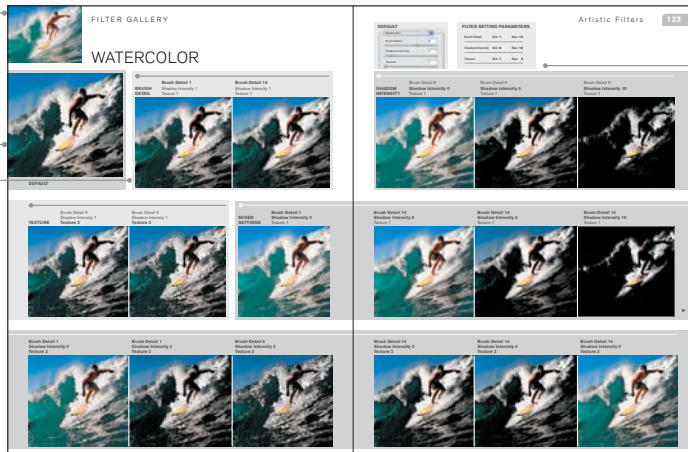
In all the years I've been using Photoshop filters (since their creation), I've marveled at how many different effects can be achieved by altering the settings. This book lays out those effects for you to see, demonstrating the extreme effects that filters can achieve, and, equally, showing filters that produce very similar results: no need to spend time experimenting with different filters when the differences are so marginal. Peruse and enjoy!

After the introduction, the filter is explored in more detail, breaking down each setting and its effects and showcasing the full range of effects available from changing multiple settings at the same time.

The original image (before the filter is applied) is shown for ease of comparison.

The original image is shown with the default filter settings applied.

Each setting is explored in turn, with regular incremental changes applied to each image, so you can see clearly the effect of changing each setting in isolation, while the other settings remain at default.



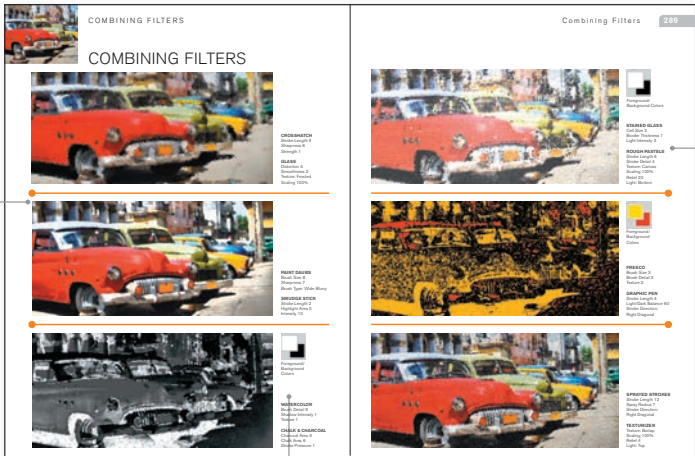
Both the default settings and the filter setting parameters are shown at the top of the page, for reference.

The Mixed Settings section contains a gallery of the most aesthetically pleasing and/or most noticeable effects that can be achieved by changing two or more of the settings from their default value.

COMBINING FILTERS

The Combining Filters section (pages 284–291) offers a taste of the visual effects that you can achieve when you apply more than one filter to an image.

The effects are clear to see in these large images.



Where relevant, the Foreground and Background Colors used are shown.

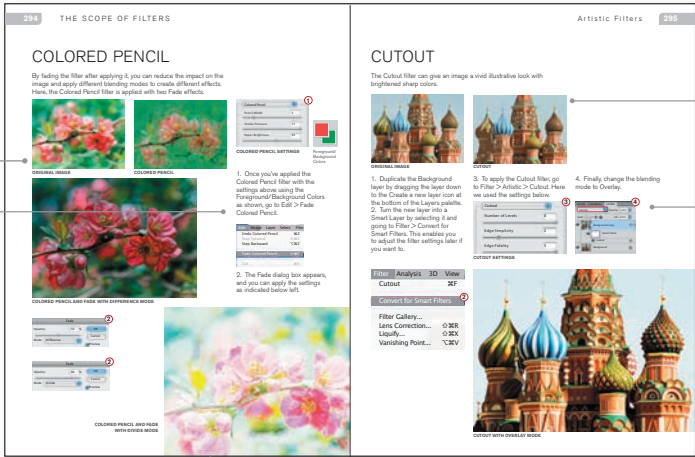
The name of the filter and the settings feature next to the relevant image.

THE SCOPE OF FILTERS

The Scope of Filters (pages 292–325) explores the possibilities of using fade and blending modes in conjunction with filters.

The original image (before the filter is applied) is shown for ease of comparison.

Numbered step-by-step instructions enable you to create the same effect on an image of your choice.



The end result is shown, with the additional elements—fade and/or blending modes—applied to the filtered image.

The original image is shown with the filter applied.

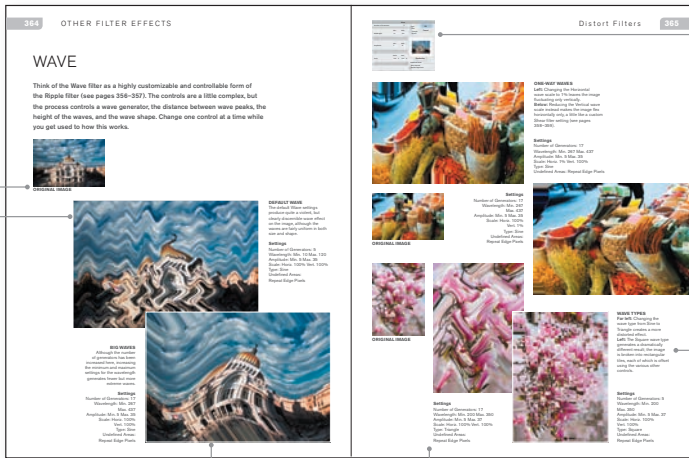
Numbered screen shots of the settings and menus correspond to the instructions.

## OTHER FILTER EFFECTS

**The Other Filter Effects section (pages 326–411) covers the filters that you can find through Photoshop’s Filters menu, rather than in the Filter Gallery.**

The original image (before the filter is applied) is shown for ease of comparison.

The original image is shown with the default filter settings applied.



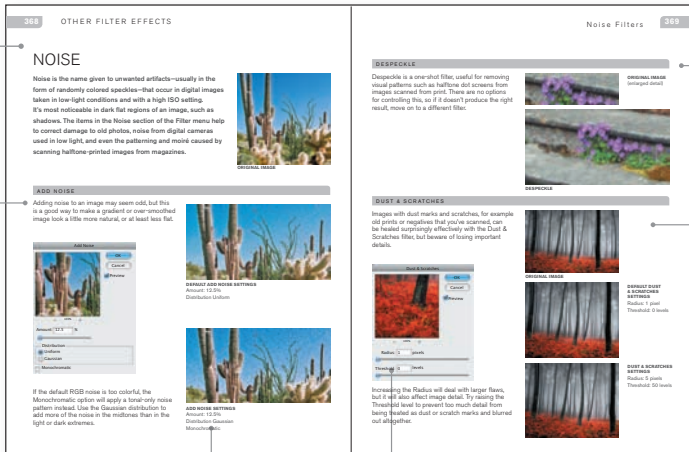
The same image is shown with different settings applied, which produce a more pleasing or different result than the default settings.

The settings used are shown near the relevant image.

Where relevant, the default settings and the filter setting parameters are shown at the top of the page, for reference. A few filters do not have any settings at all.

Further possibilities are explored with different images and settings, giving you an idea of the range of effects the featured filter can produce.

A short description of the filter's effect with the chosen settings applied is provided for each image or couple of images.



The filter, or, in some cases as here, the broader filter category, and its intricacies are introduced.

Each filter within the category is explored.

Where relevant, detail within an image is focused on, so that you can see the filter at its best effect.

As with other filters in the book, “before and after” images are shown for ease of comparison.

Some of the most useful settings are featured, showing how to solve problems by applying the filter at the correct levels.

Screen shots help you to see the relevant settings and their values.

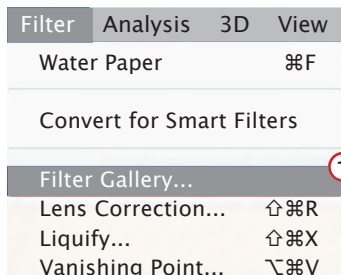


# USING THE FILTER GALLERY

The Filter Gallery is a very useful way to be able to apply filters and see an immediate preview of the effect without changing the original image. You can also use the Filter Gallery to try applying combinations of filters (see pages 284–291 for some examples of how you can combine filters), rearranging the order in which you combine them, and deleting effects.

## LAUNCHING THE FILTER GALLERY

1. To launch the Filter Gallery, go to Filter > Filter Gallery.
2. A large dialog box appears (see below) with a preview of your image on the left and the filter options on the right.
3. The filters that are available for you to apply using the Filter Gallery are displayed in groups—you can click the triangle next to the group name to display them.
4. To apply a filter, click to select it. In this example, the Palette Knife filter is applied.
5. You can change the settings for the filter on the right; the preview will update accordingly.
6. Once you're happy with your choice, click OK to apply the effect.

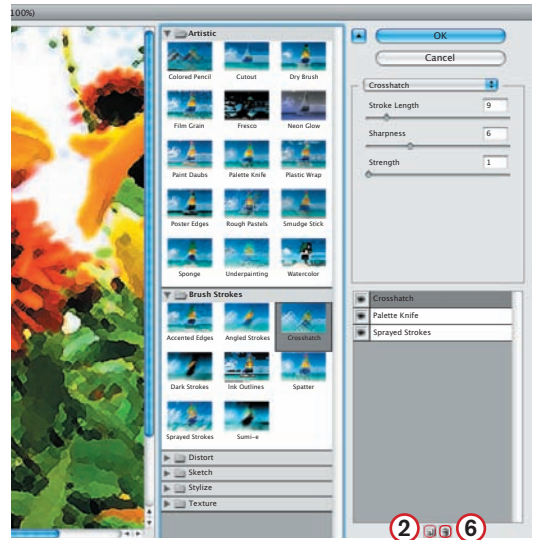


Photoshop's Filter Gallery dialog box provides quick access to many of the program's filters.

## COMBINING FILTERS USING THE FILTER GALLERY

You can apply several filters using the Filter Gallery to preview what the combinations will look like.

1. Go to Filter > Filter Gallery.
2. To add a new filter effect, click the New effect layer button under the filter settings.
3. Choose the filter you want to apply. It will combine with the first filter effect you have already applied. You can click on different filters to see which combination you prefer.
4. You can add other filter effects by clicking the New effect layer button.
5. You will find that the effect of combining the filters changes when you rearrange the filters by dragging them up or down to change their order (see below).
6. To delete a filter effect, select it and click the Delete effect layer button under the filter settings area.



ORIGINAL IMAGE

This image has a combination of three filters applied in the order shown below. Notice the different effect created by changing the order, as has happened in the image to the right.

	Crosshatch
	Palette Knife
	Sprayed Strokes

	Palette Knife
	Crosshatch
	Sprayed Strokes



# INDEX

3D clipping 397  
3D effect 252

## A

abstract effect 36, 131, 241, 271, 381  
Accented Edges 12  
  combined with Crosshatch 306  
  combined with Sponge 290  
Adobe Photoshop Marketplace 24  
Alien Skin 25  
Alt/Option 337, 339, 340, 384  
Amount slider 332, 366, 389  
Angle value 333, 362, 363, 395  
Angled Strokes 130–133  
  combined with Mosaic Tiles 286  
anisotropic diffusion 393  
applying filters  
  adding new filters 25  
  fading a filter effect 20  
  finding new filters 24  
  how to apply filters 14–15  
    applying a filter 14–15  
    RGB and CMYK color modes 14–15  
  how to use Smart Filters 16–17  
    applying filters using a smart object 17  
    converting for Smart Filters 16  
  using duplicate layers 21  
  using the Filter Gallery 18–19  
    combining filters using the Filter Gallery 19  
    launching the Filter Gallery 18  
  using the History Brush 22–23  
  what are filters? 12–13  
    used primarily for retouching 13  
    used to create artistic effects 12  
Around Center Style 367  
Artistic filters 30–123  
  Colored Pencil 32–35  
  Cutout 36–39  
  Dry Brush 40–43  
  Film Grain 44–47  
  Fresco 48–51  
  Neon Glow 52–55  
  Paint Daubs 56–63  
  Palette Knife 64–67  
  Plastic Wrap 68–71  
  Poster Edges 72–75  
  Rough Pastels 76–93  
  Smudge Stick 94–97  
  Sponge 98–101  
  Underpainting 102–119  
  Watercolor 120–123  
Auto Scale Image 330  
Average (Blur) 342

## B

Background Color 32, 33, 130, 160, 174, 175, 178, 182, 183, 186, 190, 191,

208, 209, 212, 213, 216, 217, 221, 225, 228, 229, 232, 233, 236, 237, 240, 271, 310, 314–317, 319, 321, 384, 385, 386, 400  
Background Level 190, 191, 228, 229  
Balance 139  
"barrel distortion" 330  
barrel effect 330  
Bas Relief 174–177  
  combined with Ocean Ripple 311  
Black Color 330  
Black Intensity 138, 139  
Blast method 404, 405  
bleed 240  
  extra 241  
Bloat Tool 335, 336  
blocks, tiny 397  
blueprint 221  
Blur filters 342–349  
  Average 342  
  Blur 342, 344  
  Blur More 343, 344  
  Box Blur 343  
  Gaussian Blur 344, 389  
  Lens Blur 345, 389  
  Motion Blur 346, 389  
  Radial Blur 347  
  Shape Blur 348  
  Smart Blur 348–349  
  Surface Blur 349  
blurred sharpness 56  
border, white 271  
Border size 324  
Border Thickness 271  
Box Blur 343  
brass sheeting 175  
breeze, gentle 356  
Brick Texture 77, 82–85, 103, 108–111, 196–199, 275, 278–279  
brightening 139  
Brightness 240, 345, 387  
Bristle Qualities 23  
Brush Density 337  
Brush Detail 40, 41, 48, 49, 120, 121  
Brush Pressure 336  
Brush Rate 337  
Brush Size 40, 41, 48, 49, 57, 98, 99, 102, 103, 335, 337  
Brush Strokes filters 124–157  
  Accented Edges 126–129  
  Angled Strokes 130–133  
  Crosshatch 134–137  
  Dark Strokes 138–141  
  Ink Outlines 142–145  
  Spatter 146–149  
  Sprayed Strokes 150–153  
  Sumi-e 154–157  
Burlap Texture 77, 86–89, 102, 112–115, 191, 200–203, 280–281, 325

## C

Canvas Texture 76, 78–81, 103, 104–107, 192–195, 276–277  
cartoon sketch 209  
Cell Size 271, 324, 374, 375, 380, 381, 383

Chalk & Charcoal 178–181, 312  
  combined with Watercolor 288  
Chalk Area 179  
Charcoal 20, 182–185  
  combined with Grain 321  
Charcoal Area 179  
Charcoal Thickness 182, 183  
chromatic aberration 328, 329, 331  
Chrome 186–189, 313  
Circle Pattern Type 212, 213  
Clear Amount 160, 161  
Clone Stamp Tool 338  
Clouds 384  
CMYK  
  color modes 14–15, 372  
  halftone 373  
Coarse Dots 378  
Color Burn blending mode 309, 321  
Color Dodge blending mode 307  
Color Halftone 372–373  
Colored Pencil 32–35, 294  
  combined with Palette Knife 287  
colors  
  bold 229  
  changing 183  
  one color 225  
  vibrant 237  
  vivid 45  
Combining filters 284–291  
Conté Crayon 15, 190–207, 314  
  brick 196–199  
  burlap 200–203  
  canvas 192–195  
  sandstone 204–207  
contour effects 175  
contrast 94, 131, 154, 191, 228, 232, 393  
Contrast 155, 212, 213, 236, 237, 240, 241, 256, 257  
Crack Brightness 252, 253  
Crack Depth 252, 253  
Crack Spacing 252, 253  
Craquelure 252–255  
  combined with Stamp 320  
  combined with Underpainting 291  
Create Plane Tool 338  
Crosshatch 134–137  
  combined with Accented Edges 306  
  combined with Glass 288  
crosshatch effect 310  
Crystallize 374–375  
Ctrl/Command 339, 340  
Curves adjustment layer 299, 309  
Custom 407  
Custom Chromatic Aberration 331  
Custom Geometric Distortion 330  
Custom Horizon Control 333  
Custom Transform 332  
Custom Vignette 332  
Cutout 36–39, 295  
  combined with Photocopy 286

## D

Dark Intensity 142, 143  
Dark Strokes 138–141, 307  
  combined with Plastic Wrap 291  
Darken blending mode 315  
Darkness 220  
de-interlace 406  
deep impression 216  
Definition 98, 99  
Density 228  
Depth 397  
depth, adding 44  
despeckle 369  
Detail 68, 69, 98, 99, 175, 186, 187, 217, 220, 403  
Diameter radius settings 393  
Difference blending mode 318, 385  
Difference Clouds 385  
Diffuse 392–393  
Diffuse Glow 160–163  
  combined with Film Grain 286  
  combined with Spray Strokes 310  
Digimarc 409  
dimples 169  
Direction Balance 130  
Displace 350–351  
Dissolve blending mode 305  
Distance 346  
Distort filters 158–171  
  Diffuse Glow 160–163  
  Displace 350–351  
  Glass 164–167  
  Ocean Ripple 168–171  
  Pinch 352–353  
  Polar Coordinates 354–355  
  Ripple 356–357  
  Shear 358–359  
  Spherize 360–361  
  Twirl 362–363  
  Wave 364–365  
  ZigZag 366–367  
Distortion 164, 165, 169  
Divide blending mode 299, 304, 313, 317  
Dot Pattern Type 212  
dots 372, 373  
  Coarse Dots 378  
  Fine Dots 378  
Dry Brush 21, 40–43, 296  
  combined with Smudge Stick 290  
duplicate layers 21  
Duplication 406  
Durability value 409  
Dust & Scratches filter 369

## E

Edge Brightness 126, 127, 247  
Edge Extension 330  
Edge Fidelity 36, 37  
Edge Intensity 62, 72, 73  
Edge Only mode 349  
Edge Simplicity 36, 37  
Edge Thickness 72, 73  
Edge Width 126, 247  
edge-to-center distortion 328  
edges 121, 127, 135, 187, 233  
Edit Plan Tool 340  
Emboss 394–395

- Exclusion blending mode
  - 20, 314
- exposure, increased 236
- Extrude 15, 266, 396–397
- Eye Candy 25
- F**
- Facet 376
- Fade 20, 294, 296, 303
  - combined with Halftone Pattern 318
- Feather control 339
- Fiber 386
- Fiber Length 240, 241
- Fill Empty Area With: Inverse Image 401
- Film Grain 44–47, 297
  - combined with Diffuse Glow 286
- Filter Gallery dialog box 18
- Find Edges 14, 398
- Fine Dots 378
- Foreground Color 52, 53, 174, 175, 178, 179, 182, 183, 186, 190, 191, 208, 209, 212, 213, 216, 217, 221, 225, 228, 229, 232, 233, 236, 237, 240, 270, 271, 314–317, 319, 321, 384, 385, 386, 400
- Foreground Level 190, 191, 228, 229
- Fragment 377
- Fresco 48–51, 298
  - combined with Graphic Pen 289
- G**
- Gaussian Blur 344, 389
- Gaussian distribution 368
- Glass 164–167
  - combined with Crosshatch 288
- Glow Amount 160, 161
- Glow Color 52, 53
- Glow Size 52, 53
- Glowing Edges 246–249
  - combined with Torn Edges 317
  - combined with Water Paper 287
- Grain 256–261
  - combined with Charcoal 321
- Graininess 160, 216, 217
- graininess, adding 73, 161, 208
- granulation 151
- Graphic Pen 208–211
  - combined with Fresco 289
  - combined with Water Paper 319
- graphics 209, 229
- grayscale effect 53, 161, 216, 217
- Grout Width 262, 263
- H**
- Halftone Pattern 212–215
  - combined with Fade 318
- Hard Light 351
- Hardness radius settings 339
- hashing: sharply hashed effect 131
- Heal options 339, 341
- Height setting 394, 395
- high definition 135
- High Pass 407
- Highlight Area 44, 45, 94, 95, 303
- Highlight Strength 68, 69
- highlights 160, 191
- History Brush 22–23
- honeycomb effect 271
- Horizontal Grain Type 257
- Horizontal Perspective slider 332
- I**
- Image Balance 216, 217, 224, 236
- Impressionistic style 56, 65, 374
- Ink Outlines 142–145, 308
  - combined with Poster Edges 287
- Intensity 256
- Interpolation 406
- Invert 275
- ISO settings 368
- J**
- JPEG color artifacts 371
- JPEG compression 371
- L**
- Layers palette 17, 298, 299, 302, 304–311, 313, 314, 315
- Left Diagonal Stroke Direction 150, 310
- Lens Blur 345, 389
- Lens Correction 328–333
  - Auto Scale Image 330
  - Chromatic Aberration 329
  - Custom Chromatic Aberration 331
  - Custom Geometric Distortion 330
  - Custom Horizon Control 333
  - Custom Transform 332
  - Custom Vignette 332
  - Remove Distortion Tool 331
  - Standard Correction 328–329
- lens distortion 331
- Lens Flare 386, 387
- Level 402
- Levels, adjusting 37
- Light 174
- Light: Top Right 174
- Light Intensity 142, 143, 270
- Light/Dark Balance 182, 183, 208, 209, 232, 233
- Lighten Only mode 393
- lighter effect 143
- lighter shades 191
- line artwork 221
- Line Pattern Type 212, 213
- Linear Burn 303
- Linear Light 301
- lines
  - delicate 142
  - fine 155
  - heavier 155
  - Long Lines 379
  - multiple 43
  - sharp-angled 130
- Short Lines 379
- tracing 73
- TV 213
- linocut effect 217
- Liquify 334–337
  - Adjusting Tool Options 337
  - Bloat Tool 336
  - Pucker Tool 335
  - Push Left, Mirror, and Turbulence Tools 336
  - Reconstruct Tool 335
  - Reverting to the Original Image 337
  - Saving and Loading Meshes 337
  - Twirl Tool 335
  - Warp Tool 334
- lithograph effect 57
- Load Mesh 337
- Long Lines 379
- Long Strokes 379
- Luminance (Heal option) 339
- Luminosity 297
- M**
- marbled paint 357
- marks
  - delicate 155
  - dust 369
- Mask Incomplete Blocks option 397
- masks with filters 17
- Maximum and Minimum 408
- Maximum Offset 400, 401
- Median 370
- metallic effect 187
- Mezzotint 378–379
- Midpoint slider 332
- Mirror Tool 336
- mosaic 37, 266
- Mosaic filter 266, 380–381
- Mosaic Tiles 262–265, 322
  - combined with Angled Strokes 286
- Motion Blur 130, 346, 389
- mottled effect 151
- Movie Prime Lens Type 387
- Multiply blending mode 311, 320, 384
- N**
- negative effect 53, 213, 229, 237
- Neon Glow 52–55, 301
  - combined with Note Paper 290
  - combined with Plastic Wrap 301
- New effect layer button 19
- new filters
  - adding 25
  - finding 24
- Noise filters 368–371
  - add noise 368
  - despeckle 369
  - dust & scratches 369
  - median 370
  - reduce noise 371
- Normal blend mode 312, 392
- Note Paper 216–219, 315
  - combined with Neon Glow 290
- NTSC colors 406
- Number Of Tiles 400, 401
- O**
- Ocean Ripple 168–171
  - combined with Bas Relief 311
- Off (Heal option) 339
- Offset 410–411
  - oil painting effect 57
  - On (Heal option) 339
- Opacity 17, 20, 21, 22, 297, 298, 300–303, 305, 306, 307, 309–317, 320, 322, 325, 339, 351
- Other filters
  - Custom 407
  - Digimarc 409
  - High Pass 407
  - Maximum and Minimum 408
  - Offset 410–411
- Out From Center Style 367
- outlines
  - all detail outlined 143
  - black 126
  - dark and light 127
  - definite 155
  - ink 257
  - intense 143
  - sharp 143
- Overlay blend mode 300, 305, 310, 316, 322, 351, 394
- Overlay Edge 349
- P**
- Paint Daubs 56–63, 299
  - combined with Smudge Stick 288
  - dark rough/wide sharp 58–59
  - simple/light rough 58–59
  - wide blurry/sparkle 62–63
- Palette Knife 18, 64–67
  - combined with Colored Pencil 287
  - combined with Poster Edges 300
- paper
  - black and white 33
  - blue/gray 32
- Paper Brightness 32, 33
- pastel shades 229
- Patchwork 266–269, 323
  - combined with Spatter 291
- Pencil Width 33
- percentage boxes 15
- Photocopy 220–223
  - combined with Cutout 286
  - combined with Reticulation 316
- Pin Light blending mode 319
- Pinch 352–353
- “pincushioning” 330, 331
- Pixel Bender Exchange 24
- Pixelate filters 372–383
  - Color Halftone 372–373
  - Crystallize 374–375
- Facet 376
- Fragment 377
- Mezzotint 378–379
- Mosaic 380–381
- Pointillize 382–383
- planet-like effect 355
- Plaster 224–227
- plastic cracks 253
- Plastic Wrap 68–71, 301
  - combined with Dark Strokes 291
  - combined with Neon Glow 301



pointillism, two-tone 209  
 Pointillize 382–383  
 Polar Coordinates 354–355  
 pop art 240  
 Poster Edges 72–75, 300  
   combined with Ink Outlines 287  
   combined with Palette Knife 300  
 Poster Edges filter 21  
 Posterization 72  
 preview boxes 15  
 Pucker Tool 335, 336  
 punch 352, 353  
 Push Left Tool 336  
 Pyramids 396

## R

Radial Blur 347  
 radial circles 213  
 Radius 349, 369, 370, 372, 373, 389, 391  
 Randomize button 386  
 Reconstruct button 337  
 Reconstruct Tool 335, 336  
 red pen 221  
 Reduce Noise filter 371  
 Regular Grain Type 256  
 Relief 77, 191, 216, 217, 266, 267, 274, 275  
 Remove Distortion Tool 331  
 Render filters 384–387  
   Clouds 384  
   Difference Clouds 385  
   Fibers and Lens Flare 386–387  
 Repeat Edge Pixels 411  
 Reset button 337  
 resolution 225, 247  
 Restore All 337  
 Reticulation 23, 228–231  
   combined with Photocopy 316  
 RGB color modes 14–15, 372  
 RGB noise 368  
 Ridges 367  
 Right Diagonal Stroke  
   Direction 310  
 Ripple 356–357  
 Ripple Magnitude 168, 169  
 Ripple Size 168, 169  
 Rough Pastels 76–93, 190, 302  
   brick 82–85  
   burlap 77, 86–89  
   canvas 78–81  
   combined with Stained Glass 289  
   sandstone 77, 90–93  
 Round Blunt Medium Stiff brush 23

## S

Sandstone Texture 77, 90–93, 103, 116–119, 191, 204–207, 274, 282–283  
 Save Mesh 337  
 Scaling 77, 165, 274  
 Scope of Filters 292–325  
 scratches 369  
 Selection Tool 340  
 sepia 237  
 shadow areas 95  
 Shadow Intensity 120, 121

Shape Blur 348  
 Sharpen filters 388–391  
   Sharpen 388  
   Sharpen Edges 388  
   Sharpen More 389  
   Smart Sharpen 389  
   Smart Sharpen Advanced 390  
   Unsharp Mask 391  
 sharpening and softening 95  
 Sharpness 57, 130, 131, 134, 135  
 Shear 358–359  
 Short Lines 379  
 Show Mesh 337  
 silhouette 213  
 Simple brush 56  
 Size 212  
 sketch effects 179  
 Sketch filters 172–243  
   Bas Relief 174–177  
   Chalk & Charcoal 178–181  
   Charcoal 182–185  
   Chrome 186–189  
   Conté Crayon 190–207  
   Graphic Pen 208–211  
   Halftone Pattern 212–215  
   Note Paper 216–219  
   Photocopy 220–223  
   Plaster 224–227  
   Reticulation 228–231  
   Stamp 232–235  
   Torn Edges 236–239  
   Water Paper 240–243  
 sliders 15  
 Smart Blur 348–349  
 Smart Filters 16–17, 305  
 Smart Objects 16, 17, 21  
 Smart Sharpen 13, 389  
 Smart Sharpen Advanced 391  
 Smoothness 69, 98, 126, 127, 146, 147, 164, 175, 186, 187, 228, 233, 236, 237, 246, 247  
 Smudge Stick 94–97, 303  
   combined with Dry Brush 290  
   combined with Paint Daubs 288  
 soft effect 135  
 Soft Grain Type 257  
 Soft Light blend mode 308, 323, 324, 351  
 soft vs. defined 41  
 Solarize 399  
 Solid Front Faces option 397  
 Spatter 146–149  
   combined with Patchwork 291  
 Speckle Grain Type 257  
 speckled effect 168  
 Spherize 360–361  
 Sponge 98–101  
   combined with Accented Edges 290  
   combined with Underpainting 304  
 Spray Radius 146, 147, 150, 151  
 Sprayed Strokes 150–153  
   combined with Diffuse Glow 310  
   combined with Texturizer 289  
 Square Size 266, 267, 323  
 squares 267

Stagger method 405  
 Stained Glass 270–273, 324  
   combined with Rough Pastels 289  
 Stamp 232–235  
   combined with Craquelure 320  
 Stamp Tool 339  
 Straighten Tool 333  
 Strength 134, 135, 386  
 Stroke Detail 76, 77  
 Stroke Direction 150, 151, 208  
 Stroke Length 76, 77, 94, 95, 130, 131, 134, 135, 142, 143, 150, 151, 208, 209  
 Stroke Pressure 154, 155, 179  
 Stroke Radius 151  
 Stroke Size 64, 65  
 Stroke Width 154, 155  
 strokes, thick 178  
 Stylize filters 244–249, 392–405  
   Diffuse 392–393  
   Emboss 394–395  
   Extrude 396–397  
   Find Edges 398  
   Solarize 399  
   Tiles 400–401  
   Trace Contour 402–403  
   Wind 404–405  
 Subtract blending mode 298  
 Sum-i-e 154–157, 221, 309  
 Surface Blur 349

## T

Texture 40, 41, 48, 49, 76, 120, 121, 164, 165  
   adding 44, 99, 134  
   blurring with 169  
   and detail 267  
   emphasizing 77  
   enhanced 187  
   pixelated 247  
   sharp 103  
   strong 191  
   using different textures 165  
 Texture Anarchy 24  
 Texture: Blocks 165  
 Texture Coverage 103  
 Texture filters 250–283  
   Craquelure 252–255  
   Grain 256–261  
   Mosaic Tiles 262–265  
   Patchwork 266–269  
   Stained Glass 270–273  
   Texturizer 274–283  
 Texture Relief 102  
 textured effects 121, 151  
 Texturizer 94, 274–283, 325  
   brick 278–279  
   burlap 280–281  
   canvas 276–277  
   combined with Sprayed Strokes 289  
   sandstone 282–283  
 Threshold 345, 349, 407  
 Tile Size 262, 263  
 Tiles 400–401  
 Torn Edges 236–239  
   combined with Glowing Edges 317  
 Trace Contour 402–403  
 Transform Tool 341

translucence 65  
 Transparency 330  
 tunnel-like effect 355  
 Turbulence Tool 336  
 Turbulent Jitter 337  
 Twirl 335, 362–363  
 two tones 233

## U

Unaltered Image 401  
 Underpainting 102–119  
   brick 108–111  
   burlap 112–115  
   canvas 104–107  
   combined with Craquelure 291  
   combined with Sponge 304  
   sandstone 116–119  
 Unsharp Mask 391

## V

Vanishing Point 338–341  
   adding graphics 341  
   define a plane 338  
   editing a plane 339  
   multiple planes 340  
 Variance slider 386  
 Vertical 151  
 Vertical Grain Type 257  
 Vertical Perspective slider 332  
 Video filters  
   de-interface 406  
   NTSC colors 406  
 Vignette option 329, 332  
 vignetting 328, 332  
 Vivid Light blending mode 23, 298, 307, 311  
 vortex 363

## W

Warp Tool 334, 335  
 Water Paper 17, 240–243  
   combined with Glowing Edges 287  
   combined with Graphic Pen 319  
 Watercolor 120–123, 305  
   combined with Chalk & Charcoal 288  
   watercolor effect 40, 49, 253  
 Wave 15, 364–365  
 White Color 330  
 White Intensity 138, 139  
 Wide Blurry brush 57  
 Wind 404  
 Wrap Around 410

## Z

ZigZag 366–367  
 Zoom Blur Method 347